

Continuing Education for Healthcare Professionals



COURSE DESCRIPTION:

Two day course designed to introduce participants to the science, assessment and application techniques of the Kinesio Taping® Method. Lecture tutorials of the history, science and theory of stimulus transmission through skin and resulting therapeutic benefit across efferent and afferent systems is reviewed. Corrections for Epidermis, Dermis, Fascia, Space, and Muscle in case study format are presented. Lecture and demonstration by the instructor, then participants perform the Manual Assessments and Movement Assessments. Discussion of the assessment flow charts to determine correct applications and general progression of treatment clinically.

Day Two continues with instruction and demonstration of assessment and taping procedures for the Mechanical, Tendon, Ligament and Circulatory/Lymphatic Corrections in case study format. Time is allotted for questions and discussion of the assessment flow charts to determine correct applications and general progression of treatment clinically.

LEARNING OUTCOMES:

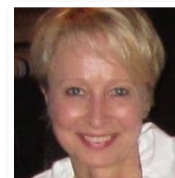
- List 3 unique qualities of Kinesio® Tex Tape.
- List 3 different physiological systems affected by Kinesio® Tex Tape.
- List 3 contraindications and 3 precautions of using Kinesio® Tex Tape.
- List the best use for each type of Kinesio® Tex Tape.
- Describe and demonstrate cutting at least 4 different Kinesio Taping® application tape shapes: I Strip, Y Strip, Web Cut, X Cut, etc.
- Describe 1 situation where it would be appropriate to use each different tape cut.
- Demonstrate 1 of the 3 methods of safely removing Kinesio® Tex Tape from skin.
- Demonstrate the appropriate use of Manual Direction Tests for tissue and muscle
- Demonstrate the use of Kinesio® Screening Assessments to identify target tissue for treatment.
- Demonstrate the proper application of Kinesio® Epidermis, Dermis and Fascia Taping technique.
- Demonstrate the proper application of corrective techniques: Fascia, Mechanical, Space, Functional, Lymphatic, Tendon, Ligament, and Muscle Correction.
- Describe the difference between an underactive and overactive muscle correction application.
- Identify appropriate tension range for each corrective technique.
- Describe the difference between a ligament correction and tendon correction.
- List 1 condition that the Functional Correction would be used for.
- Describe the difference between "long and short oscillation" and "side to side oscillation" used in the Fascial Correction application.



Kinesio Taping® Assessments Fundamental Concepts and Techniques

INSTRUCTOR:

Ewa Jaraczewska, PT, CKTI, is Adult-NDT certified and a Certified TheraTogs Fitter. Currently, Ms. Jaraczewska is the manager of rehabilitation services at Loyola University Medical Center in Maywood, IL. She received her physical therapy degree from the Physical Therapy School in Warsaw, Poland and completed a three month internship at the Center for Children with Duchene muscular dystrophy in France. Following graduation, she worked as a staff physical therapist in the neurology clinic at the Medical School Hospital in Warsaw. After two years, Ms. Jaraczewska became a faculty member at the Physical Therapy School in Warsaw. Four years later, Ms. Jaraczewska moved to the United States where she worked in acute care at George Washington University and Georgetown University, Washington, DC, in inpatient rehabilitation at The Rehabilitation Institute of Chicago, and in homecare at a private agency. Throughout her career, she has been involved in research and teaching. At George Washington University Hospital, Ms. Jaraczewska, was actively involved in amyotrophic lateral sclerosis (ALS) research. At the Rehabilitation Institute of Chicago, she developed a multidisciplinary clinic for patients with Parkinson's disease. She is a contributor and presenter for the annual Kinesio taping Symposium. She has been a Certified Kinesio taping Instructor since 2003.



PROGRAM NUMBER: 10111

CEUs: 1.6 (Contact Hours: 16 hours)

PRICE: \$675

LEVEL: Introductory

AUDIENCE:

PTs, OTs, OTAs, PTAs, ATs, Physicians, Chiropractors, Licensed Acupuncturists, Licensed Massage Therapists, and other allied health professionals

DATE: Friday, September 22 to Saturday, September 23, 2017
 8:00 a.m. to 5:30 p.m. Friday; 8:00 a.m. to 5:30 p.m. Saturday

LOCATION: UW-Milwaukee Continuing Education Plankinton Building, 7th Floor
 161 West Wisconsin Avenue, Milwaukee, WI 53203

CONTENT FOCUS:

Domain of OT:
 Performance Skills

Occupational Therapy Process:
 Evaluation, Intervention,
 and Outcomes

QUESTIONS? CONTACT US

CHS-CE.UWM.EDU

| 414-227-3123

| CHS-OUTREACH@UWM.EDU