

University Committee Town Hall, Illustrations

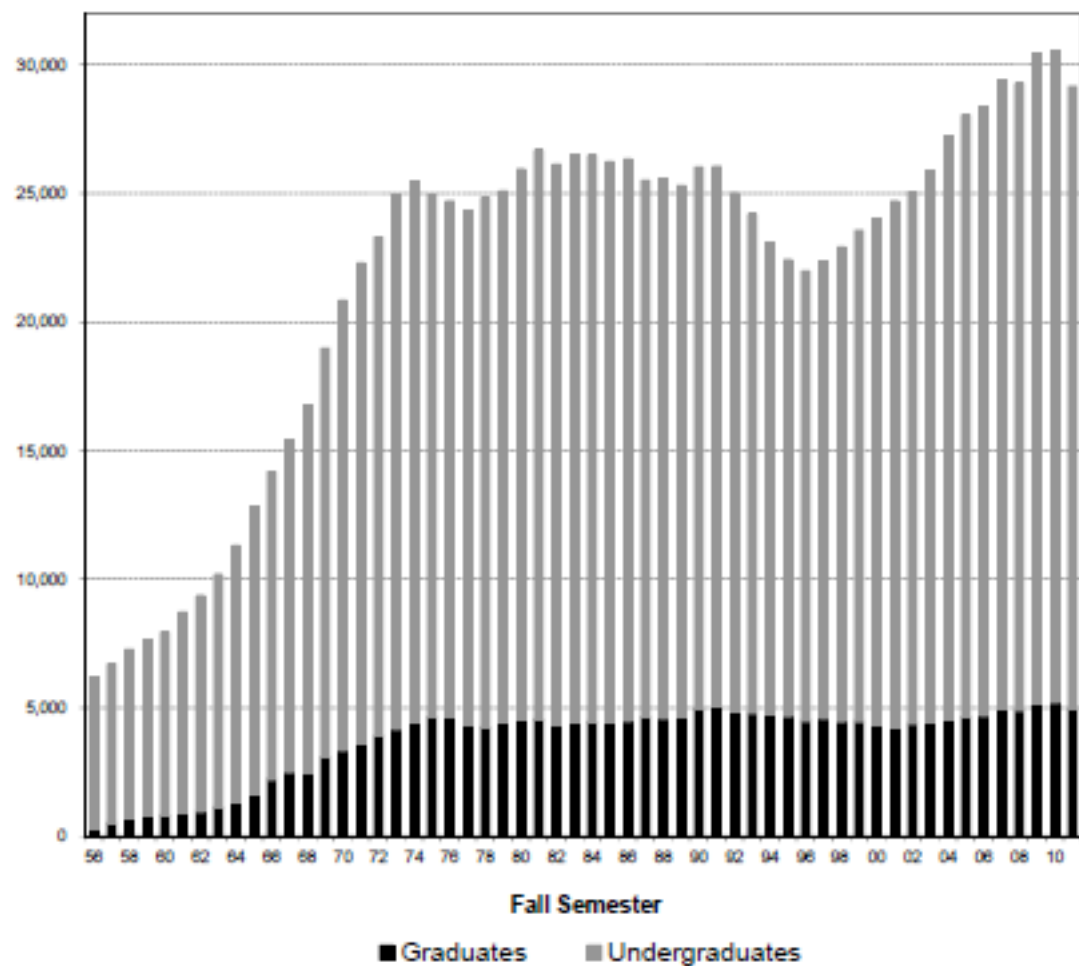
July 30, 2014

Living in the Volatile World of
UWM - Enrollment

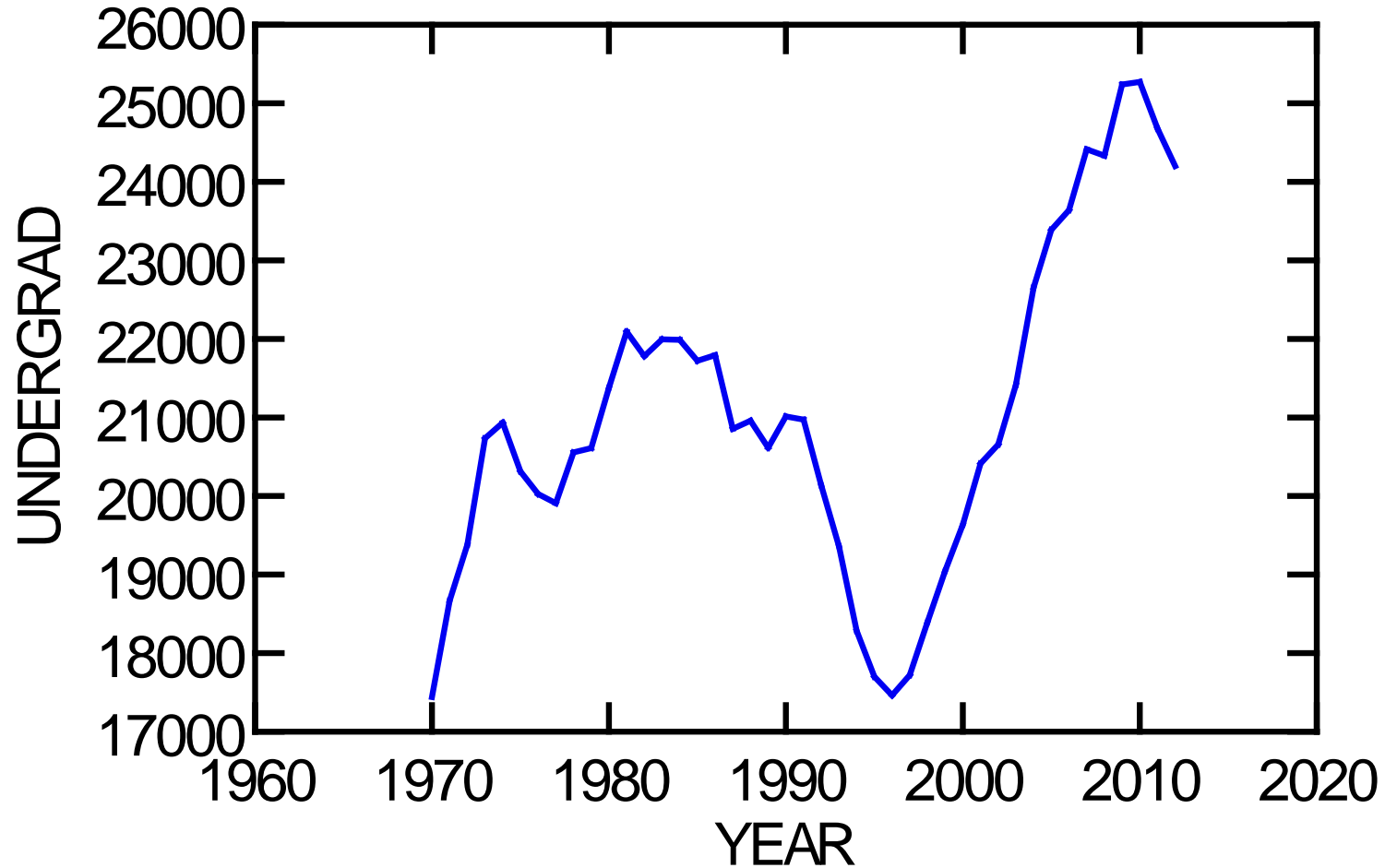
UWM's Volatile Enrollment History

- Campus grew from 5,000 (1956) to 25,000 (1973).
- Dropped to 22,000 in 1996; grew to 30,000 in 2010, is dropping again.
- Within that larger pattern, there have been major shifts in graduate and undergraduate shares.
- Faculty growth has not kept up with the student growth
- Volatility will continue because of demographic trends through 2020.

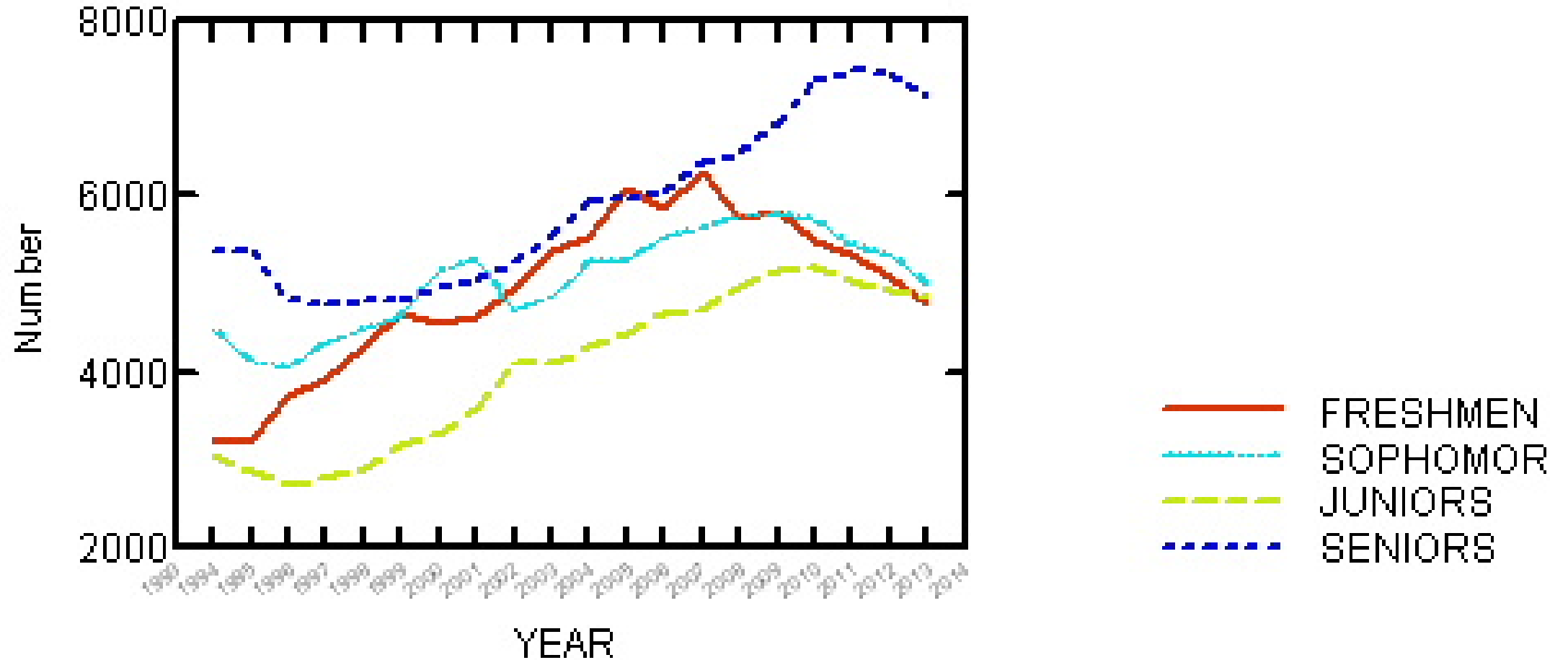
Fall Enrollment By Undergraduate/Graduate



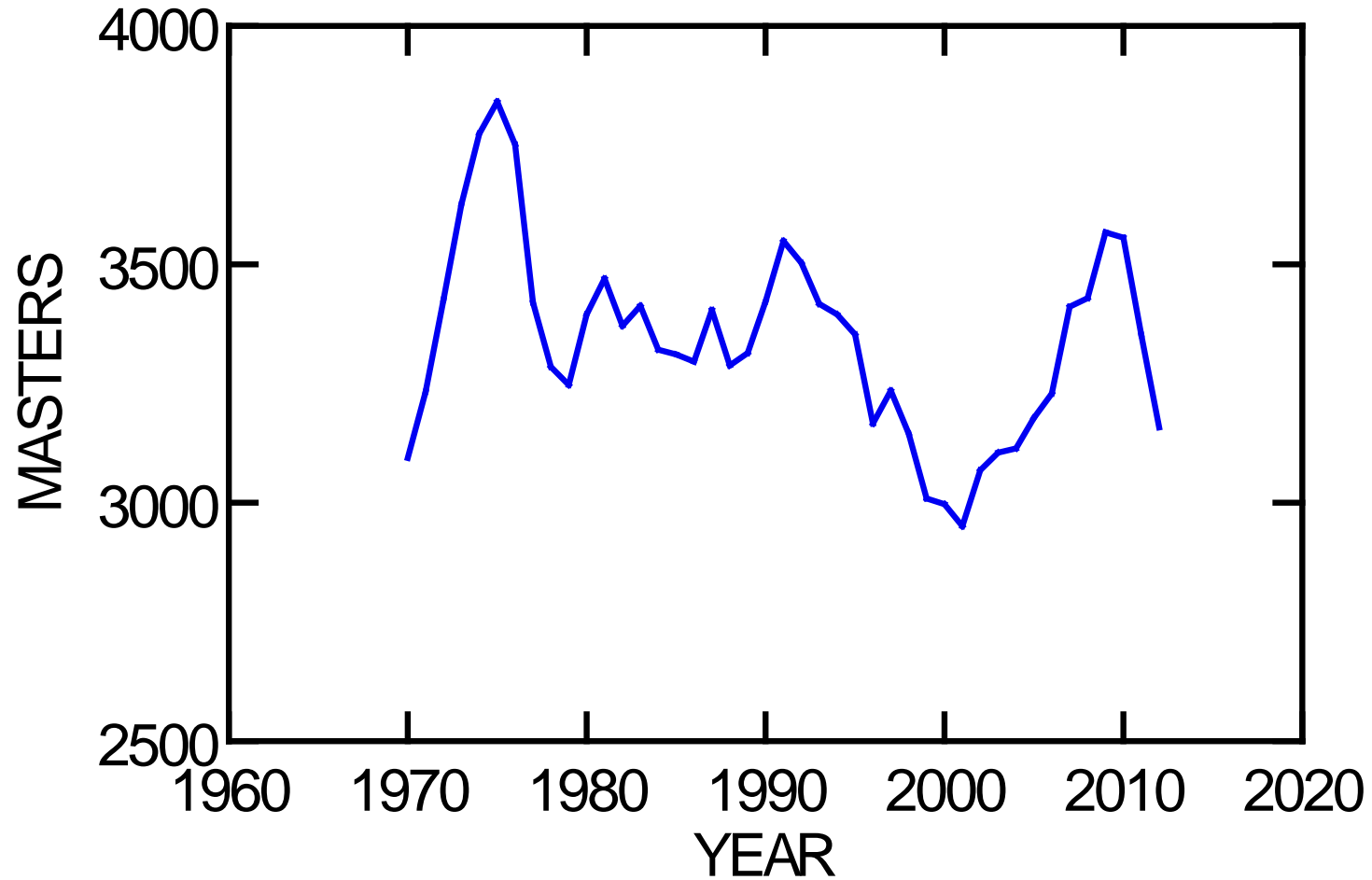
UWM Undergraduate Enrollment, 1970-2012



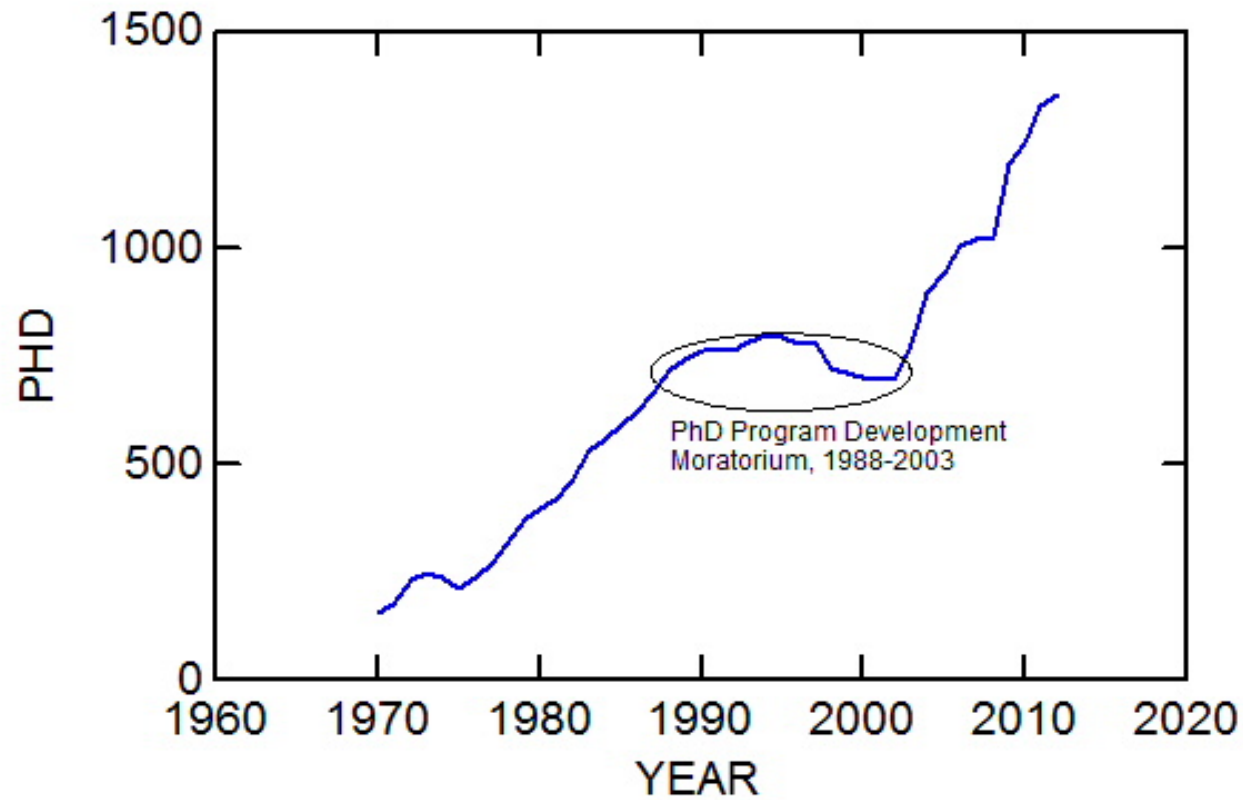
Undergraduate Enrollment Trends by Year



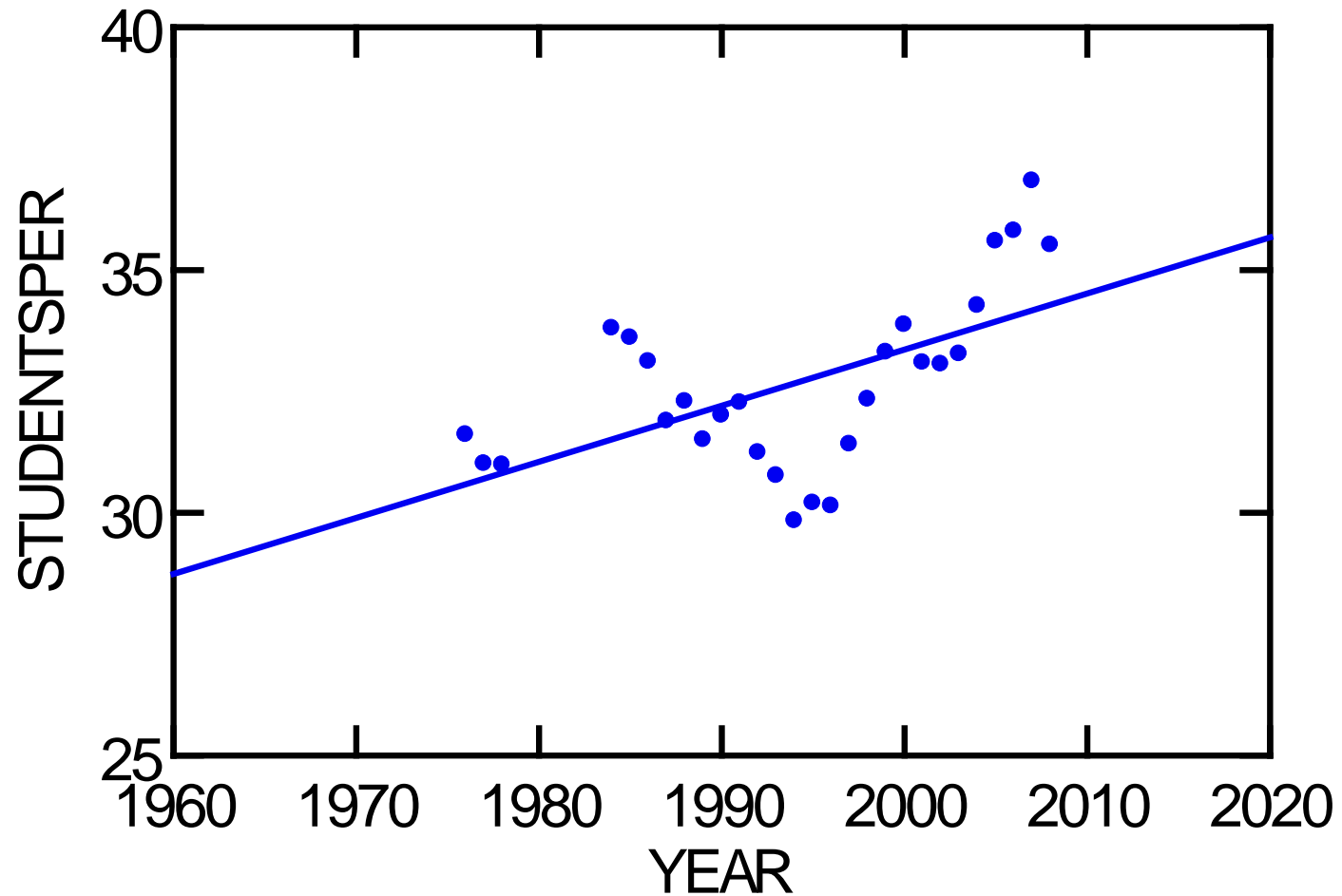
UWM Masters Enrollment, 1970-2012



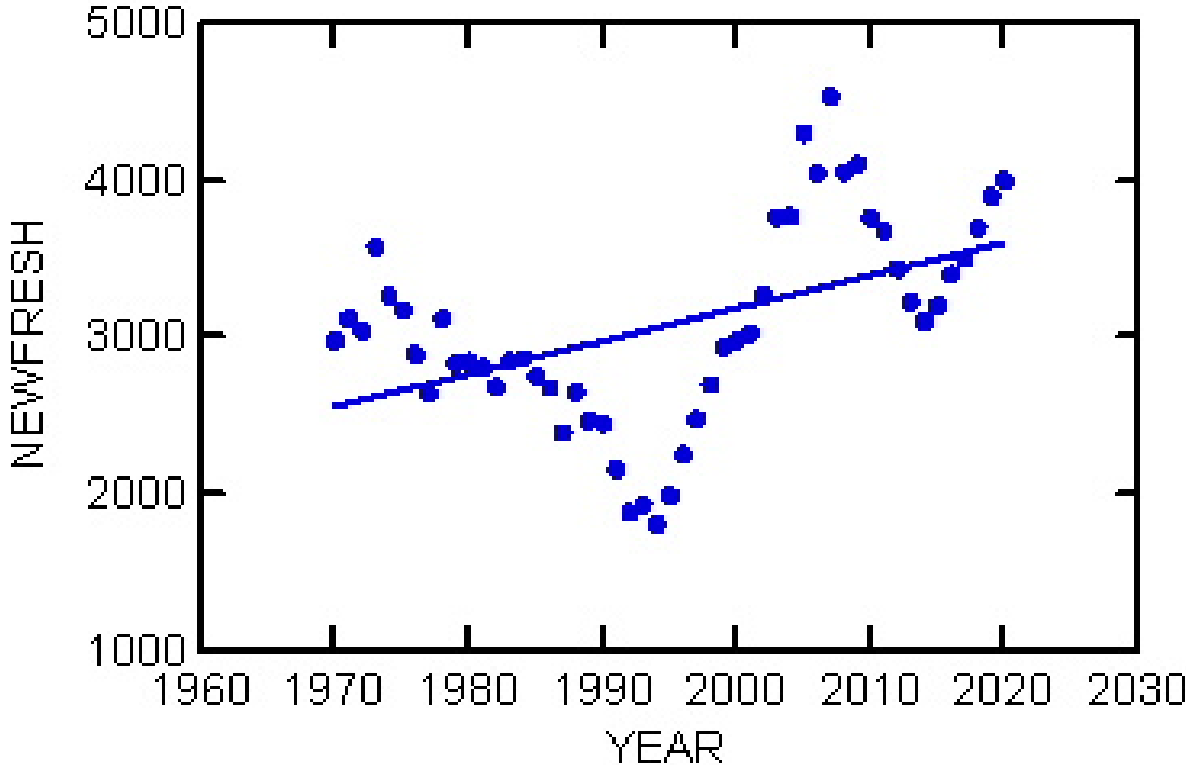
UWM PhD Enrollment, 1970-2014

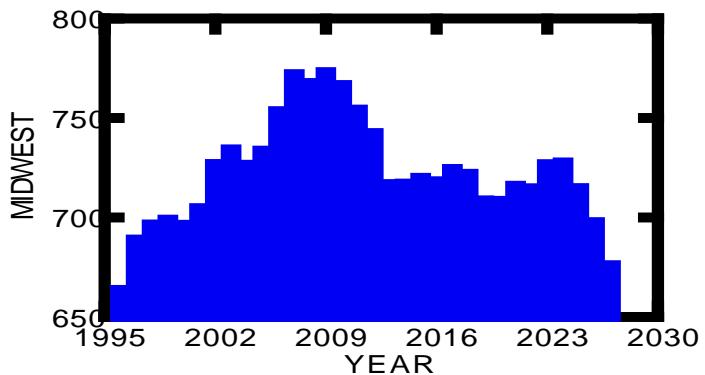
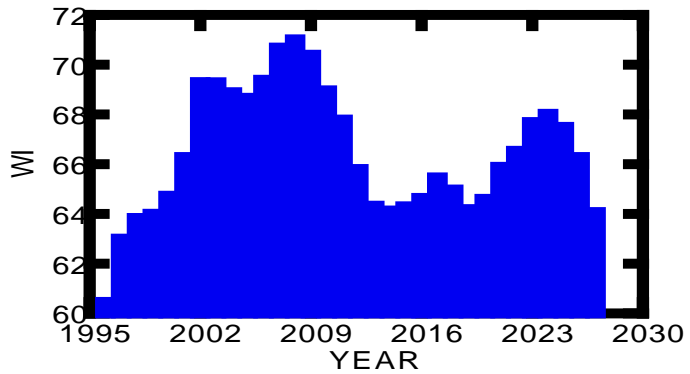
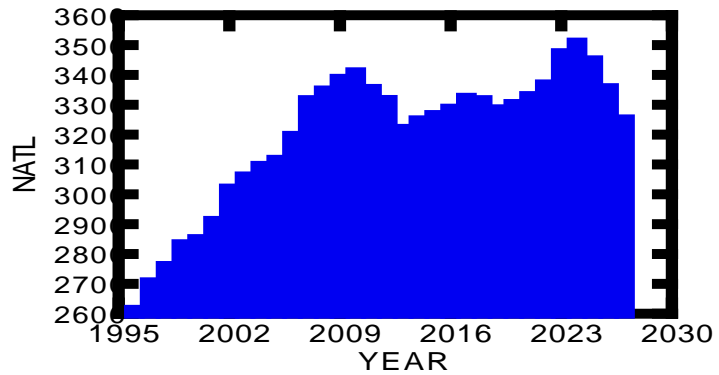


Students per Faculty Member (with trend)



Trends in UWM New Freshman (post 2013 are goals)

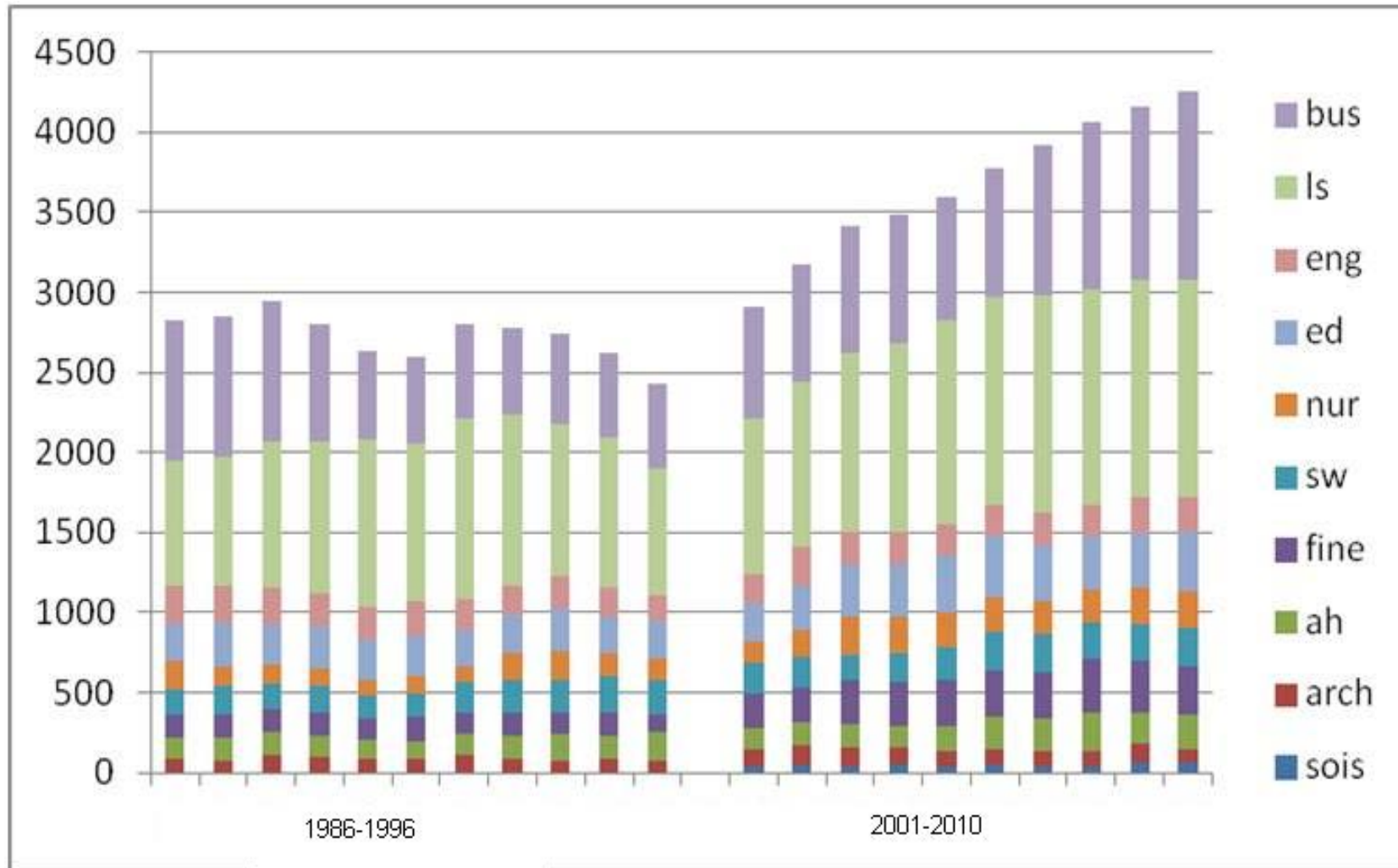




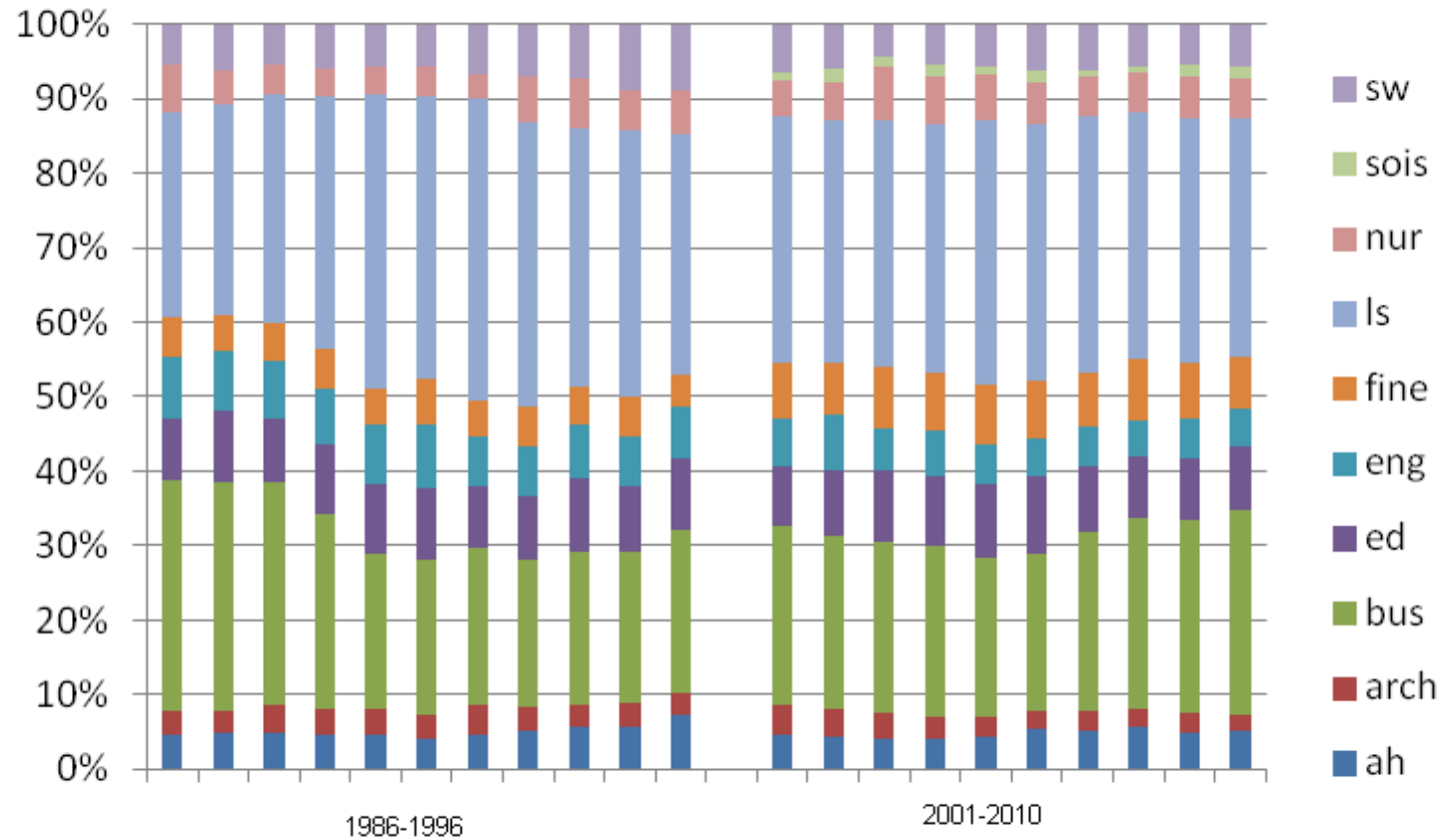
High School Graduates, Wisconsin, the Midwest and the Nation, 1996-2027 (in thousands)

Graduation Trends

BA/BS Graduates by School/College, 1986-96 and 2001-2010



Proportions of BA/BS Graduates by School/College, 1986-96 and 2001-2010



State Funding: The National and Local Context

An Era of Neglect (article from the Chronicle of Higher Education)

- “Explore how state and federal support has declined as a share of overall revenue—putting a greater burden on students—at more than 600 four-year public colleges and universities since 1987.”
- Here are the patterns for three classifications of universities, largest 20 declines
- UWM is listed in Research University, High Research Activity

Research Univ., Very High Research Activity

Institution	Share of revenue coming from state support		Change in state support:
	1987	2012	1987-2012
University of Illinois at Chicago Chicago, IL	52.80%	16.90%	-35.9 pts
University of California at Davis Davis, CA	63.40%	30.20%	-33.2 pts
University of California at Riverside Riverside, CA	66.60%	33.90%	-32.7 pts
Georgia State University Atlanta, GA	67.00%	35.20%	-31.8 pts
University of South Carolina at Columbia Columbia, SC	52.20%	21.60%	-30.7 pts
University of California at Santa Barbara Santa Barbara, CA	54.10%	23.40%	-30.7 pts
University of California at Santa Cruz Santa Cruz, CA	58.90%	28.70%	-30.2 pts
University of Houston main campus Houston, TX	55.80%	27.50%	-28.3 pts
University of South Florida Tampa, FL	69.00%	40.80%	-28.2 pts
Wayne State University Detroit, MI	54.10%	26.70%	-27.4 pts
Michigan State University East Lansing, MI	45.00%	17.80%	-27.2 pts
Rutgers University at New Brunswick New Brunswick, NJ	59.60%	32.60%	-27.0 pts
University of California at Berkeley Berkeley, CA	49.40%	22.60%	-26.8 pts
University of Massachusetts at Amherst Amherst, MA	61.80%	35.10%	-26.7 pts
University of Oregon Eugene, OR	35.80%	9.30%	-26.5 pts
Arizona State University at Tempe Tempe, AZ	50.20%	23.70%	-26.5 pts
University of Florida Gainesville, FL	56.00%	29.90%	-26.1 pts
University of Illinois at Urbana-Champaign Champaign, IL	42.30%	16.40%	-25.9 pts
University of California at Los Angeles Los Angeles, CA	47.80%	22.20%	-25.6 pts
Montana State University at Bozeman Bozeman, MT	51.40%	25.80%	-25.6 pts

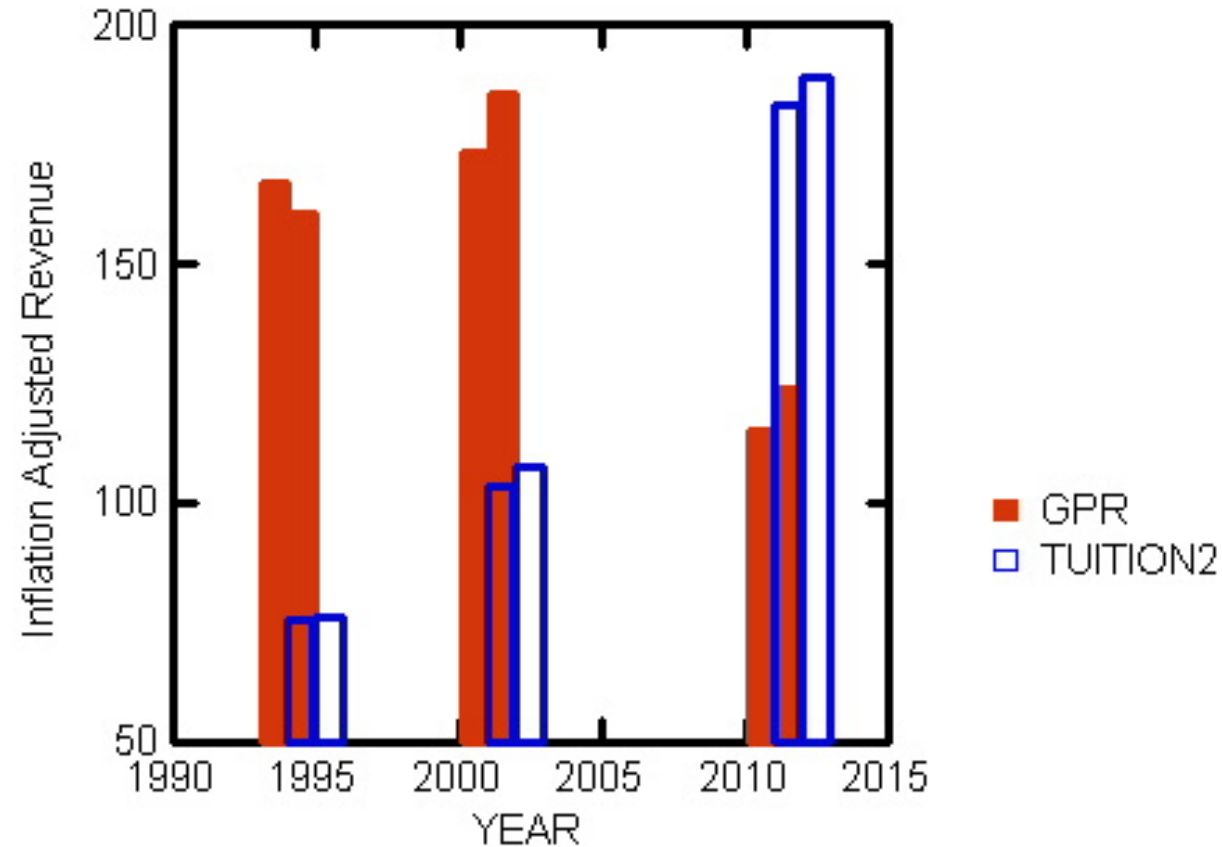
Research Univ., High Research Activity

Institution	Share of revenue coming from state support		Change in state support: 1987-2012
	1987	2012	
University of Massachusetts at Boston Boston, MA	78.00%	32.80%	-45.2 pts
University of Massachusetts at Lowell Lowell, MA	75.40%	32.40%	-43.0 pts
George Mason University Fairfax, VA	61.20%	24.60%	-36.6 pts
Western Michigan University Kalamazoo, MI	62.70%	27.80%	-34.8 pts
New Jersey Institute of Technology Newark, NJ	66.30%	31.90%	-34.4 pts
University of Texas at Arlington Arlington, TX	65.60%	31.70%	-33.9 pts
Florida International University Miami, FL	67.00%	34.50%	-32.6 pts
Clemson University Clemson, SC	55.70%	23.70%	-32.1 pts
Indiana University-Purdue University at Indianapolis Indianapolis, IN	57.30%	27.40%	-29.9 pts
Michigan Technological University Houghton, MI	53.60%	24.10%	-29.5 pts
Northern Arizona University Flagstaff, AZ	60.70%	31.20%	-29.5 pts
University of Colorado at Denver Denver, CO	41.00%	11.50%	-29.4 pts
University of North Texas Denton, TX	63.30%	34.20%	-29.1 pts
Southern Illinois University at Carbondale Carbondale, IL	60.40%	31.80%	-28.5 pts
University of Alabama at Tuscaloosa Tuscaloosa, AL	55.30%	27.00%	-28.4 pts
Portland State University Portland, OR	47.50%	19.20%	-28.3 pts
University of Wisconsin at Milwaukee Milwaukee, WI	55.70%	28.00%	-27.7 pts
University of Missouri at Kansas City Kansas City, MO	58.20%	31.20%	-27.0 pts
University of Akron Akron, OH	52.80%	26.20%	-26.7 pts
College of William and Mary Williamsburg, VA	49.30%	22.70%	-26.6 pts

Doctoral Research Universities

Institution	Share of revenue coming from state support		Change in state support: 1987-2012
	1987	2012	
Middle Tennessee State University Murfreesboro, TN	67.20%	25.60%	-41.6 pts
University of Northern Colorado Greeley, CO	55.00%	16.20%	-38.9 pts
Sam Houston State University Huntsville, TX	66.60%	29.60%	-37.0 pts
Illinois State University Normal, IL	61.10%	24.90%	-36.2 pts
Texas Woman's University Denton, TX	73.70%	43.20%	-30.5 pts
Texas A&M University at Commerce Commerce, TX	68.40%	38.00%	-30.5 pts
Oakland University Rochester Hills, MI	48.10%	19.90%	-28.3 pts
Texas A&M University at Corpus Christi Corpus Christi, TX	68.00%	41.40%	-26.6 pts
Central Michigan University Mount Pleasant, MI	48.80%	23.50%	-25.4 pts
Lamar University Beaumont, TX	60.00%	34.80%	-25.2 pts
East Tennessee State University Johnson City, TN	66.30%	42.50%	-23.8 pts
South Carolina State University Orangeburg, SC	50.40%	26.80%	-23.6 pts
Georgia Southern University Statesboro, GA	56.50%	35.90%	-20.6 pts
University of West Florida Pensacola, FL	67.30%	47.00%	-20.4 pts
Indiana University of Pennsylvania Indiana, PA	53.10%	33.00%	-20.1 pts
Indiana State University Terre Haute, IN	69.40%	51.00%	-18.5 pts
Texas Southern University Houston, TX	57.00%	39.90%	-17.1 pts
University of North Carolina at Charlotte Charlotte, NC	67.30%	50.30%	-17.0 pts
Tennessee State University Nashville, TN	45.20%	30.70%	-14.5 pts
Morgan State University Baltimore, MD	63.80%	49.90%	-13.9 pts

UWM General Purpose and Tuition Revenue, 1994-95 to 2011-12



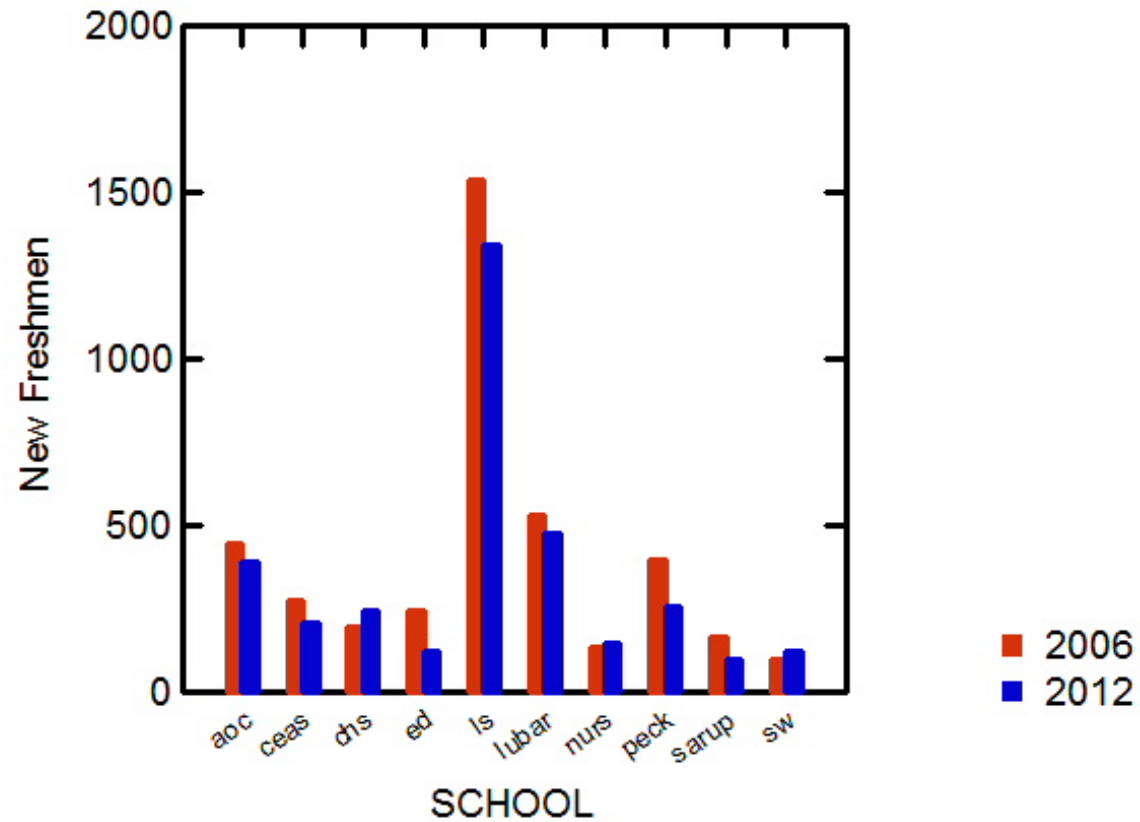
UNDERGRADUATE STUDENT COSTS, BY INSTITUTION, 5-YEAR HISTORY

Institution	Tuition/Fees*		University Housing	Most Popular Meal Plan	Total Academic Year	
	Resident	Non-resident			Resident	Non-resident
Eau Claire (1)						
2008-09	\$6,199	\$13,772	\$2,730	\$2,230	\$11,159	\$18,732
2009-10	6,628	14,201	2,830	2,800	12,258	19,831
2010-11	7,360	14,933	2,920	2,850	13,130	20,703
2011-12	8,018	15,591	3,040	2,907	13,965	21,538
2012-13	8,686	16,259	3,192	2,990	14,868	22,441
Green Bay (2)						
2008-09	6,308	13,881	3,300	1,400	11,008	18,581
2009-10	6,614	14,187	3,400	1,600	11,614	19,187
2010-11	6,973	14,546	3,700	1,750	12,423	19,996
2011-12	7,282	14,855	3,800	1,900	12,982	20,555
2012-13	7,648	15,221	3,900	2,050	13,598	21,171
La Crosse (1)						
2008-09	6,648	14,221	3,130	2,290	12,068	19,641
2009-10	7,509	15,082	3,240	2,390	13,139	20,712
2010-11	7,910	15,483	3,240	2,390	13,540	21,113
2011-12	8,328	15,901	3,300	2,462	14,258	21,831
2012-13	8,750	16,334	3,500	2,500	14,761	22,334
Madison						
2008-09	7,564	21,814	4,411	2,498	14,473	28,723
2009-10	8,310	23,059	4,584	2,573	15,467	30,216
2010-11	8,983	24,233	4,772	2,663	16,418	31,668
2011-12	9,665	25,415	4,968	2,756	17,389	33,139
2012-13	10,378	26,628	5,172	2,852	18,402	34,652
Milwaukee						
2008-09	7,305	17,033	3,878	1,860	13,043	22,771
2009-10	7,702	17,431	4,138	2,700	14,540	24,269
2010-11	8,151	17,880	4,350	2,668	15,169	24,898
2011-12	8,675	18,404	4,690	3,492	16,857	26,586
2012-13	9,181	12,810	5,023	3,571	17,775	21,404
Oshkosh						
2008-09	6,037	13,610	3,320	2,400	11,757	19,330
2009-10	6,440	13,922	3,440	2,424	12,204	19,786
2010-11	6,680	14,234	3,560	2,448	12,656	20,229
2011-12	6,995	14,568	3,680	2,448	13,123	20,696
2012-13	7,351	14,924	3,752	2,496	13,599	21,172
Parkside						
2008-09	6,068	13,641	3,690	1,880	11,638	19,211
2009-10	6,276	13,849	3,800	1,950	12,026	19,599
2010-11	6,619	14,192	3,914	2,060	12,593	20,166
2011-12	6,930	14,503	4,032	2,160	13,122	20,695
2012-13	7,287	14,860	4,152	2,230	13,669	21,242
Platteville (1)						
2008-09	6,147	13,720	2,900	1,909	10,956	18,529
2009-10	6,456	14,029	3,016	1,986	11,458	19,031
2010-11	6,772	14,345	3,106	2,102	11,980	19,553
2011-12	7,113	14,685	3,261	2,781	13,155	20,727
2012-13	7,457	15,030	3,520	2,920	13,897	21,470

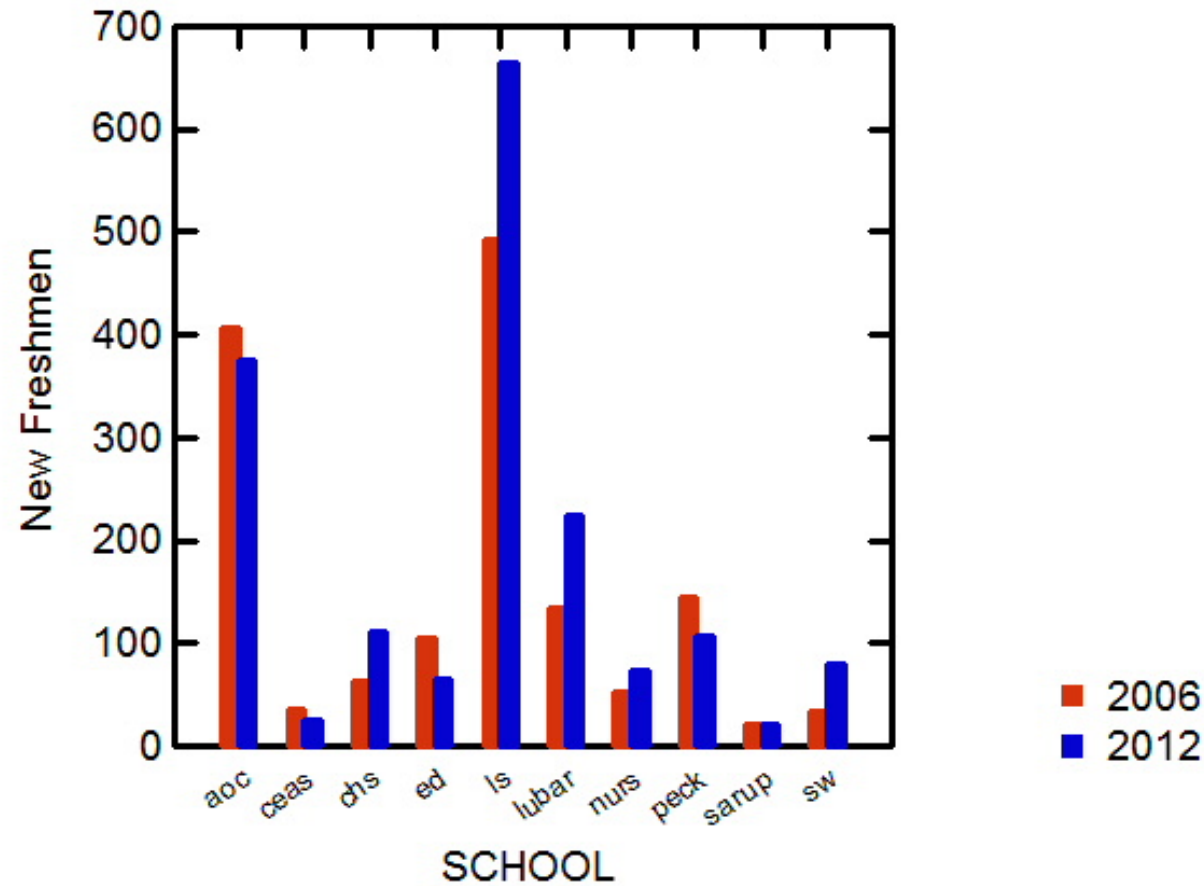
Student Costs

New Freshmen: Numbers and Remediation

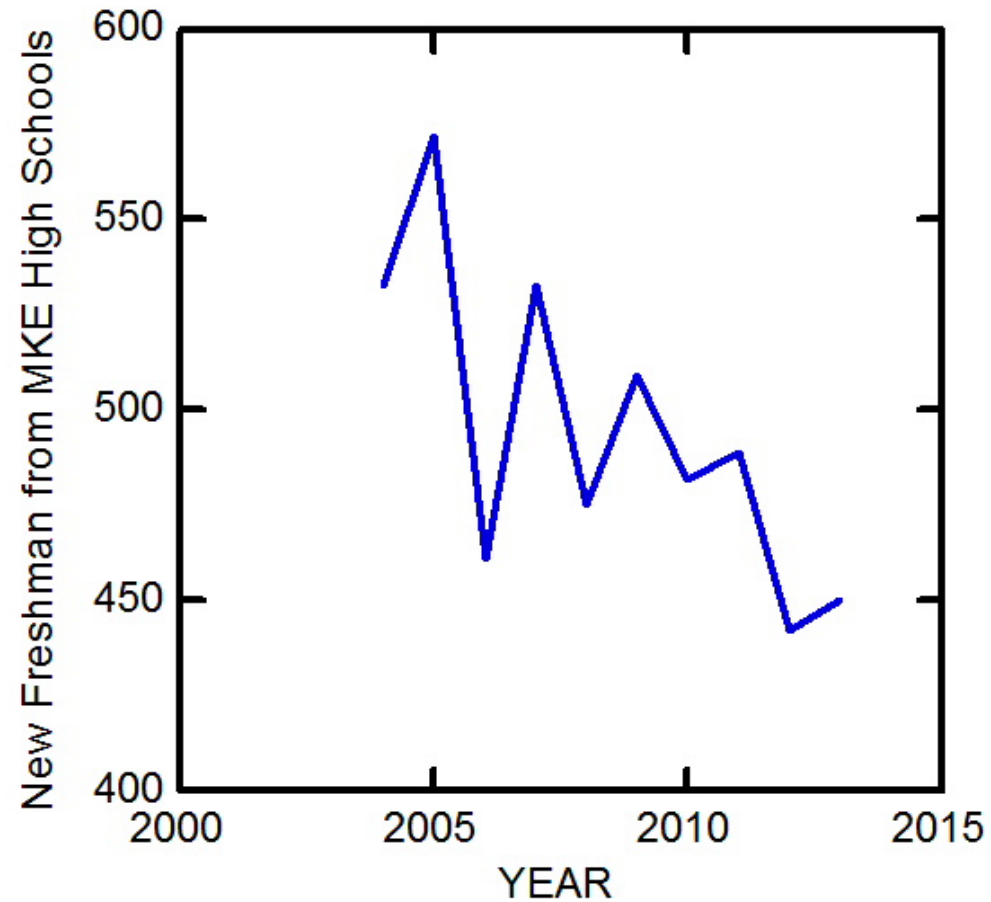
New Freshmen, 2006 and 2012 by School/College



Remediation by School/College, 2006 and 2012



New Freshmen, Milwaukee High Schools, 2004-13



Words to Live By...

Sifting and Winnowing (Mitchell Hall plaque)

