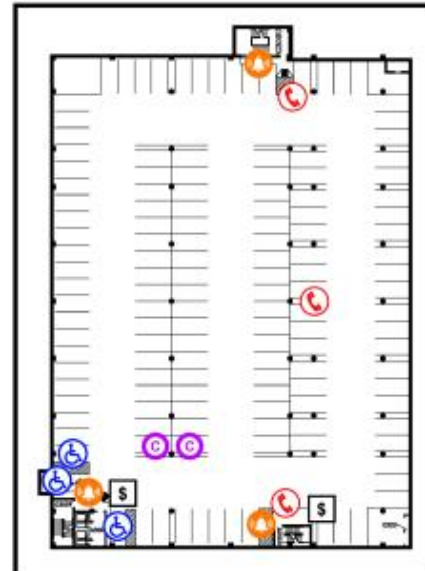
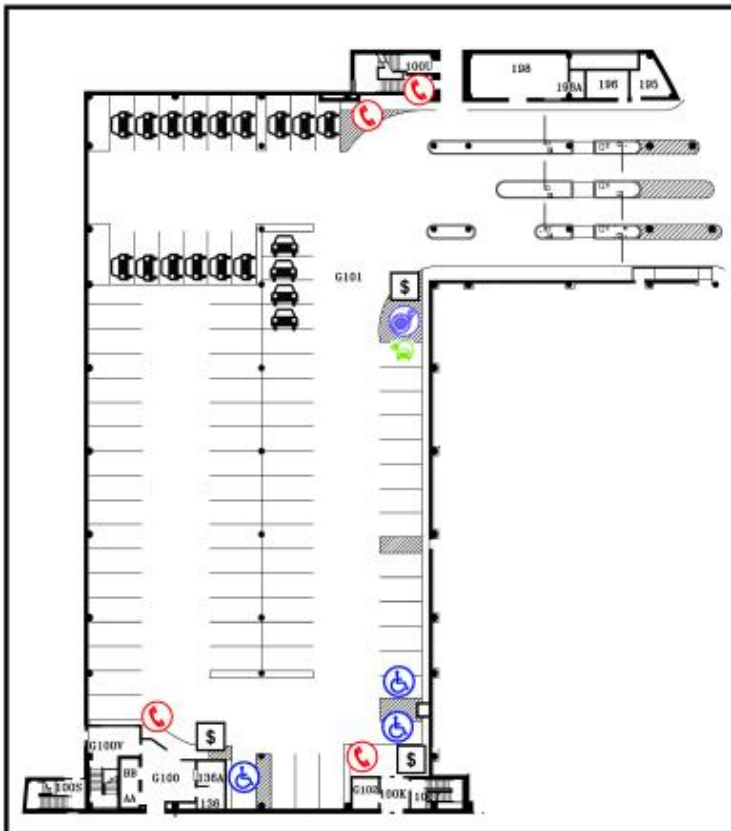




Parking and Transit

Pavilion Parking Garage
3409 N Downer Ave.



Typical Level Plan

	Free Air Pump		Compact Car
	Fire Alarm Pull Stations		
	ADA Parking Only		
	Emergency Phone		
	Pay Station/Exit		
	Actively Charging Electric Cars Only		
	Reserved: Pavilion Permit Holders		

Ground Level Plan

All unmarked spaces are available for public parking
 Disabled Parking: \$0.60/hr
 Public Parking:
 Mon-Sat (5a-7p): \$1/hr || \$7 max for up to 9 hrs;
 \$10 max for up to 10 hrs.
 Mon-Sat (7p-2a): \$1/hr || \$2 max
 Sun Mon (5a-2a): \$1/hr || \$2 max

Enter garage off of E. Edgewood Ave.

