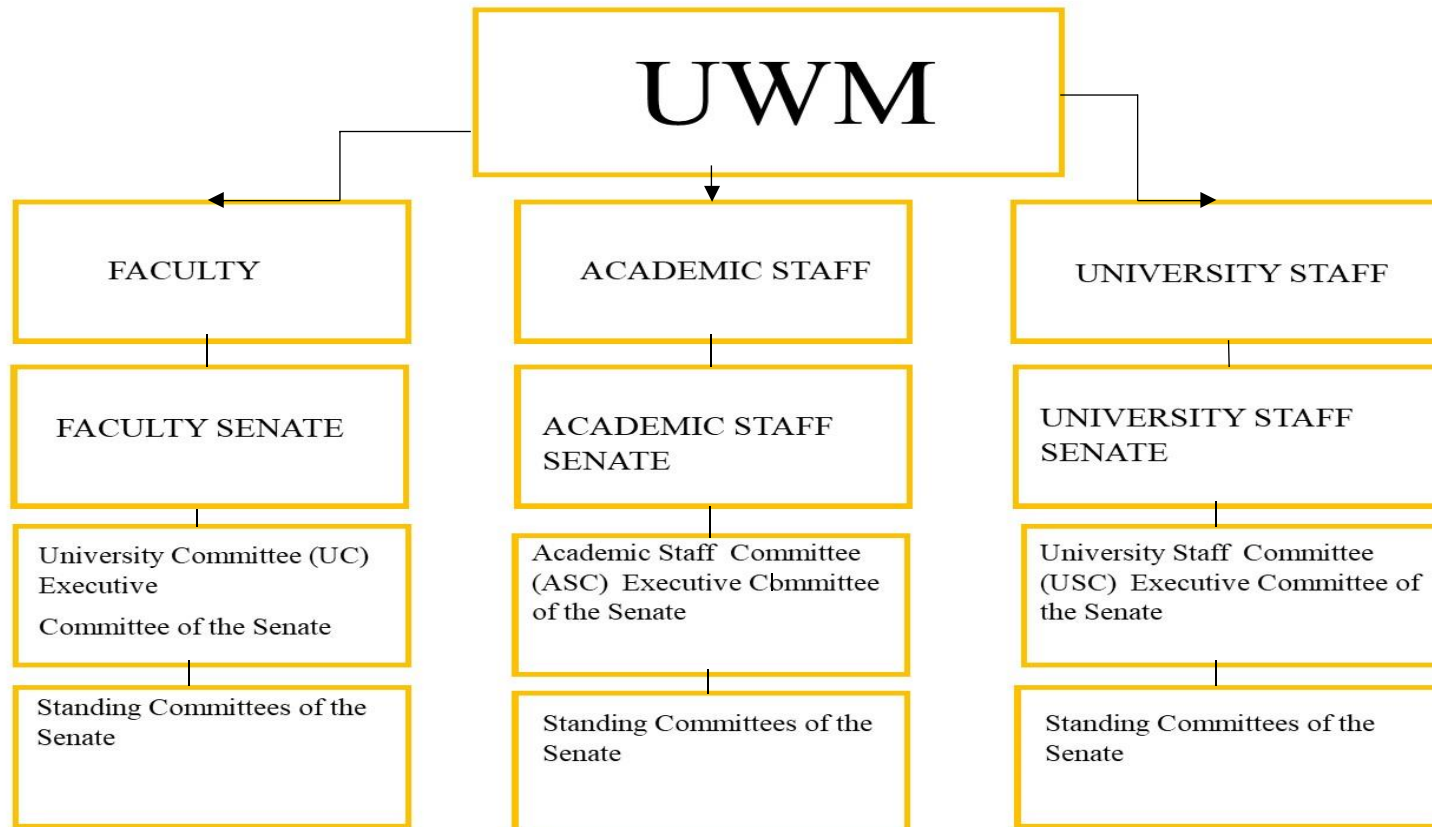


**UWM
UNIVERSITY STAFF
SHARED
GOVERNANCE**

**WELCOME TO UWM UNIVERSITY STAFF
GOVERNANCE AND SENATE**

ORGANIZATIONAL CHART



UNIVERSITY STAFF GOVERNANCE

University Staff Senate

University Staff Committee
Executive Committee of the Senate

University Staff Standing Committees

PROPORTIONAL DISTRIBUTION CATEGORIES (PDC)

The categories of University Staff employees are sorted by Divisions as reported by Human Resources. Categories and number of employees are subject to change and the Nominations committee is charged with confirming current numbers at the time of Elections to maintain an equal distribution among University Staff.

- Financial and Administrative Affairs (FAA)
- Other Administrative Divisions (OAD)
- Schools and Colleges (SC)*

*College of General Studies (Waukesha and Washington County Campuses included with Schools and Colleges as of 2019-2020. The College of General Studies has closed as of the 2024-2025 Academic Year. Changes to Schools and Colleges would not change participation in Elections for University Staff.

FINANCIAL AND ADMINISTRATIVE AFFAIRS-DIVISION B02

- University Information Technology Services (UITS) -(CIO)
- Business & Financial Services (BFS)-(AVC)
 - Controller's Office
 - Bursar's Office
 - Purchasing
- Human Resources -(AVC)
- Facilities Planning Management -(AVC)
 - Campus Planning & Mgmt
 - Facilities
 - Transportation Services
 - University Safety & Assurances
 - Office of Sustainability
- Legal Affairs (Chief Legal Counsel)
- University Police-(Police Chief)

OTHER ADMINISTRATIVE DIVISIONS (OAD)-DIVISIONS

B01-Chancellor's office

B03-Student Affairs

B04-Enrollment Management

B05-Academic Affairs

B50-UWM Libraries

B91-University Relations & Communications

B92-UWM Development & Alumni Relations

B93-Global Inclusion & Engagement

B94-Secretary of the University's office

OLD SCHOOLS & COLLEGES

- B10 College of Health Sciences
- B11 School of Architecture & Urban Planning
- B12 Lubar School of Business Administration
- B17 School of Education
- B19 College of Engineering & Applied Science
- B21 Peck School of the Arts
- B25 School of Freshwater Sciences
- B34 Graduate School Research
- B35 Graduate School Education
- B38 College of General Studies (Waukesha & Washington County Campuses)
- B48 College of Letters & Science
- B51 School of Information Studies
- B65 College of Nursing
- B70 Zilber School of Public Health
- B86 Helen Bader School of Social Welfare
- B90 School of Continuing Education

NEW SCHOOLS/COLLEGES

College of Arts and Architecture

School of Architecture and Urban Planning (SARUP)

Peck School of the Arts (PSOA)

College of Community Engagement and Professions

School of Education (SOE)

Helen Bader School of Social Welfare

School of Information Studies (SOIS)

College of Engineering and Applied Sciences (CEAS)

School of Freshwater Sciences

College of Health Professions and Sciences

Biomedical Sciences & Health Care Admin

College of Nursing

College of Rehab Sciences & Technology

Joseph J. Zilber College of Public Health

College of Letters & Science

Lubar College of Business

UNIVERSITY STAFF SENATE

REVISED 2023

Expanding the original membership of University Staff representation at UWM, the University Staff Senate will consist of 27 members (Senators). Senators are elected as nine (9) members of the University Staff Committee (three each in the Proportional Distribution Categories) with eighteen (18) additional members (Senators) with five (5) from each of the three Proportional Distribution Category (15 members) and three (3) from any Proportional Distribution Category to form the full Senate.

The Senate will meet monthly to discuss current issues and concerns facing University Staff and act on matters presented to the Senate (i.e. US policies, US documents).

UNIVERSITY STAFF COMMITTEE (USC)

Formerly the University Staff Council, the University Staff Committee (USC) serves all university staff by serving as the Executive Committee of the Senate of the University Staff. The Chair of the Committee or designee will report to the University Staff Senate on the committee's activities. The Chair of the University Staff Committee also serves as Chair of the University Staff Senate. The Vice-Chair of the University Staff Committee serves as the Vice-Chair of the University Staff Senate.

UNIVERSITY STAFF STANDING COMMITTEES OF THE US SENATE

- **University Staff Awards Committee**

The University Staff Awards Committee serves all university staff to screen nominees and select the candidates recommended for the Annual University Staff Outstanding Performance Awards.

- **University Staff Codification Committee**

The University Staff Codification Committee, formerly the Bylaws Committee, serves all university staff by reviewing bylaws of the University Staff Senate, University Staff Committee (formerly University Staff Council the executive committee of the Senate) and all Standing Committees of the University Staff Senate. In addition, they will review all policies and procedures—before they go to the University Staff Senate for final approval.

UNIVERSITY STAFF STANDING COMMITTEES OF THE US SENATE

- **University Staff Grievance Committee**

The UWM University Staff Grievance Committee serves all UWM University Staff by hearing step two grievance cases to determine whether just cause for the discipline or discharge has been established.

University Staff Layoff Committee

The University Staff Layoff Committee serves all university staff by reviewing layoffs proposed by a division/school/college/department/program/or unit.

- **University Staff Nominations Committee**

The Nominations Committee makes recommendations to the chair of the University Staff Committee on appointments to committees when needed based on preference sheets filled out by University Staff members on an annual basis.

UNIVERSITY WIDE COMMITTEES

Standing Committees of the Faculty Senate with University Staff Representation

1. Academic Planning and Budget Committee (APBC)
2. Academic Policy Committee (APC)
3. Information and Technology Committee (ITPC)
4. International Committee (IC)-includes 2 subcommittees
5. Physical Environment Committee (PEC)-includes 2 subcommittees
6. Policy Advisory Committee (PAC)
7. University Relations Committee (URC)

OTHER COMMITTEE WORK

Various System and UWM Administrative committees that have University Staff that meet for specific purposes.

- UWM's Campus Space Planning Committee
- UWM's IT Administrative, AI, Infrastructure Planning and Security Committees
- UWM's LGBTQ Committee
- UWM Search & Screen Committees
- UW-System Committees
- Independent Election Commission (for UWM Student Election Oversight)
<https://uwm.edu/studentassociation/elections/iec/>
- Newly formed committees and/or work groups

**UNIVERSITY
STAFF WEBSITE:
[HTTPS://UWM.EDU/SECU/US/](https://uwm.edu/secu/us/)**