

REVIEW OF NON-INSTRUCTIONAL ACADEMIC STAFF FOR INDEFINITE APPOINTMENT

INTRODUCTION

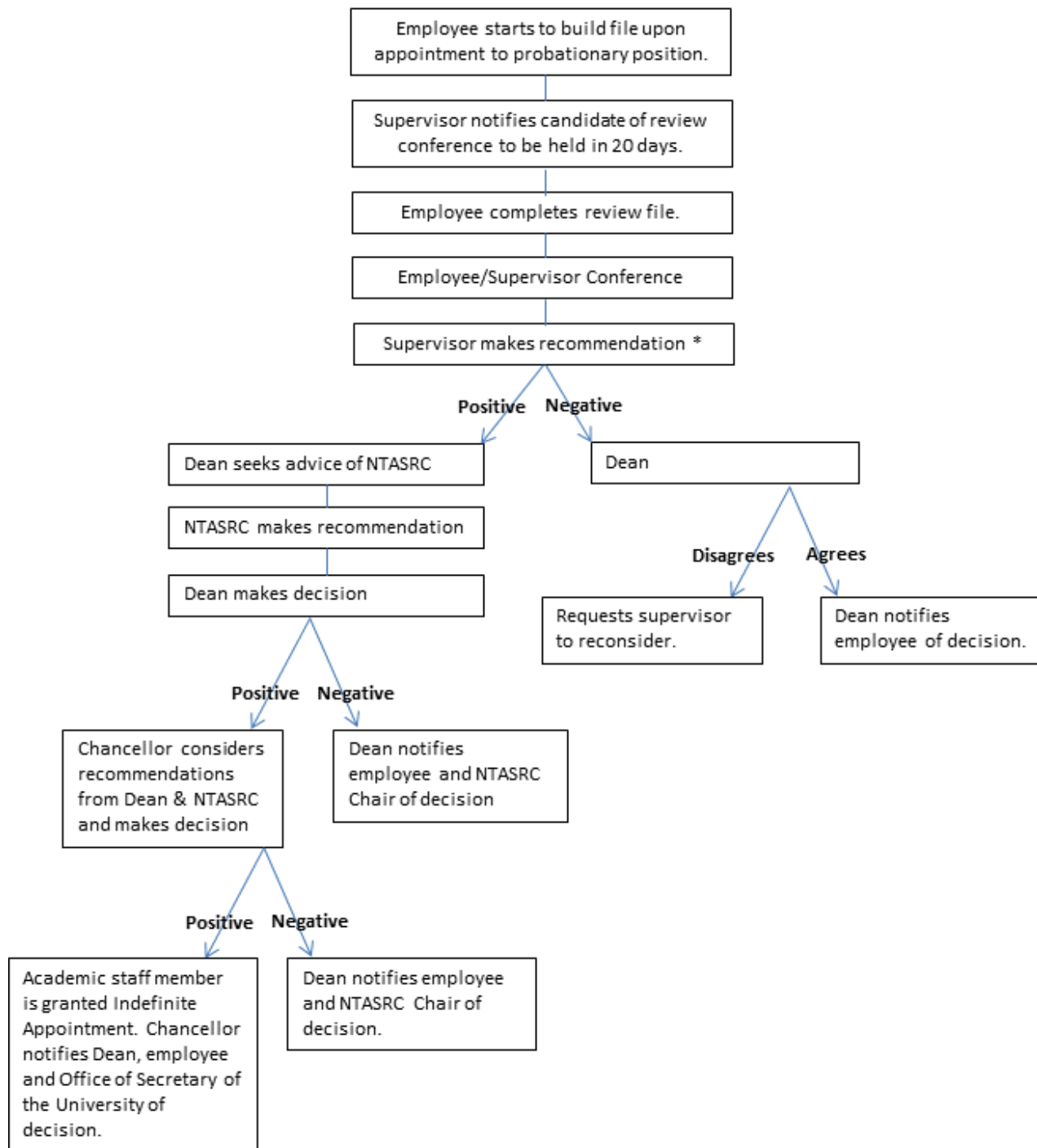
An indefinite appointment is recognition of an academic staff member's professional development and their contribution to realizing the objectives of the University of Wisconsin–Milwaukee. An indefinite appointment is an appointment with permanent status and for an unlimited term, granted by the Chancellor to a member of the academic staff. Such an appointment is terminable only for cause under UWS 11 and UWM 109, or for reasons of budget or program under UWS 12 and UWM 110.

The review defined in UWM 107 of the Academic Staff Personnel Policies and Procedures must be formally initiated by the immediate supervisor (as designated in UWM 107.02). Promotion to an indefinite appointment requires a positive decision by the Chancellor upon positive recommendations by the candidate's immediate supervisor and Dean/Division head. * The Non-Instructional Academic Staff Review Committee (NIASRC) conducts its review after the immediate supervisor makes a positive recommendation to the Dean/Division Head. This review provides for peer evaluation, and the resulting recommendation is advisory to the Dean/Division head and to the Chancellor.

*In some operative divisions there are intermediate levels of administration. In such cases, the Dean/Division head may consult with the intermediate supervisor.

The following diagram represents the review process as described in Chapter 107 of the Academic Staff Personnel Policies & Procedures.

For Promotion to Indefinite Appointment



- In some operating divisions there are intermediate levels of administration. In such cases, the dean/division head may consult with the intermediate supervisor.
- ** A non-renewal decision may be appealed (see Chapter 106 of the Academic Staff Personnel Policies & Procedures; <http://uwm.edu/secu/policies/as/>)

REVIEW CRITERIA

The NIARC uses the following criteria in its review of a candidate recommended for promotion to indefinite status:

1. Excellence in performing assigned job duties and responsibilities
2. A high and consistent level of demonstrated professional growth and development
3. A demonstrated commitment to higher education and to the University of Wisconsin-Milwaukee

These qualities are to be documented in a review file that must:

1. Delineate the duties and responsibilities of the candidate's position and evaluate the candidate's performance in these duties and responsibilities
2. Describe and evaluate the candidate's professional growth and development
3. Assess the candidate's current and probable future commitment to higher education and service to the University

**Non-Instructional Academic Staff Review Committee (NIASRC)
Calculating your timeline for Indefinite Appointment Worksheet**

To help you determine your timeline for indefinite review, follow the process outlined in this example.

| | With Prior Years of Service | Without Prior Years of Service |
|-------------|--|---|
| I. | See your probationary contract letter to determine your actual start date. For this example, we will use <u>March 15, 2021</u> , as the start date of your probationary appointment. | See your probationary contract letter to determine your actual start date. For this example, we will use <u>March 15, 2021</u> , as the start date of your probationary appointment. |
| II. | Were you awarded “ prior years of service ” (may be listed as “ Period of probationary service counted ”) on your initial contract? (See Academic Staff Personnel Policies & Procedures Chapter 104.03 for more information.) | Were you awarded “ prior years of service ” (may be listed as “ Period of probationary service counted ”) on your initial contract? (See Academic Staff Personnel Policies & Procedures Chapter 104.03 for more information.) |
| | YES: For this example, we will use 2 years as the number of prior years of service granted. If awarded prior years of service, you must back up the start date of your review timeline to reflect those prior years of service. Your start date becomes <u>March 15, 2019</u> . | NO*: The start date of your review timeline is the same as the start date of your appointment: <u>March 15, 2021</u> . *Unsure? Review your initial contract or meet with your unit’s personnel representative ASAP. |
| II. I. | You should start pulling together your indefinite file five years into your review timeline. (See Academic Staff Personnel Policies & Procedures Chapter 107 for more information.) For indefinite review purposes, that date would be: <u>March 15, 2024</u> . | You should start pulling together your indefinite file soon after your 5 th anniversary (at the start of your 6 th year). (See Academic Staff Personnel Policies & Procedures Chapter 107 for more information.) That date would be: <u>March 15, 2026</u> . |
| I V . | You should plan to have your file submitted no later than five years and six months into your review timeline to allow sufficient time for the file to be processed. Therefore, the goal date to submit the file is: <u>September 15, 2024</u> . | You should plan to have your file submitted no later than six months after your 5 th anniversary to allow sufficient time for the file to be processed. Therefore, the goal date to submit the file is: <u>September 15, 2026</u> . |
| V . | We recommend that the entire review process be completed no later than five years and nine months into your review timeline: <u>December 15, 2024</u> . | We recommend that the entire review process be completed no later than three months prior to your sixth anniversary: <u>December 15, 2026</u> . |

REQUIRED CONTENTS OF FILE

I. ***Table of Contents***

Number all pages in file. Table of Contents is page 1.

II. ***Glossary of Acronyms & Abbreviations***

Include an alphabetical listing of **all** acronyms and/or abbreviations used throughout your file.

III. ***Current Resume***

Include a reverse chronological listing of all professional employment in your resume, including each employment assignment at the University of Wisconsin–Milwaukee.

IV. ***Most Recent Position Description***

Include the most recent official position description that includes a percentage breakdown of job duties. Part A of the Position Description Questionnaire (PDQ) may be used. (If the PDQ is used, include only the 1-2 page percentage breakdown, not the entire PDQ). If your position description has changed, include **all** pertinent position descriptions.

V. ***First Probationary Contract***

Include your first probationary contract. If you have had a change in position, title, unit, etc., include **all** pertinent contracts.

VI. ***Prior Service***

If you have been awarded prior years of service, you must either (1) include performance evaluations from the prior years of service granted, or (2) submit a 1–2-page summary of your prior performance, professional service and development, and service to higher education and/or UWM.

VII. ***Performance Reviews***

Include all performance reviews, including your self-evaluations and supervisor's evaluations, and any responses prepared by the candidate (see Academic Staff Personnel Policies & Procedures Chapter 105 for more information). Make sure that you have signed your self-evaluations, and that your supervisor's evaluations include **all** required signatures.

VIII. ***Professional Growth and Development and University Service***

A. **Membership and Participation in Professional/Service Organizations or Societies**

List memberships and briefly indicate how your membership and participation in these organizations contributed toward your professional growth and development. You may comment on each of your memberships individually or as a group.

B. **University Service**

List instances of service beyond the scope of your duties to UWM and indicate the manner in which your contributions served the University. You may briefly comment on each instance of service individually or as a group.

C. **Conferences, Seminars, Workshops, etc.**

List your participation in these and related events.

D. **Educational Development, Research, Publications, Special Awards**

List your accomplishments in these areas.

E. **Community Service**

List instances of service to the community in which you live and/or work.

IX. **Letters of Reference**

Include **at least three** but **not more than five** current letters of reference. These references should be from a variety of individuals who can evaluate your performance in relation to the review criteria. Faculty members, academic and classified staff, students, members of the community, etc., may be used as references.

X. **Personal Statement**

Describe your strengths, contributions, and commitment to the University as they relate to the review criteria (1–2 pages suggested; **3 pages maximum**).

XI. **Materials Submitted by the Immediate Supervisor**

A. Recommendation Summary

The immediate supervisor's recommendation summary should address the candidate's suitability for promotion to indefinite status through inclusion of the following (in any form):

1. An assessment of the candidate's performance of the duties and responsibilities stated in the position description with particular attention given to significant achievements/accomplishments.
2. An evaluation of the initiative shown by the candidate in determining and improving the quality, direction and/or scope of the service provided by **their** position and/or unit.
3. An assessment of the candidate's probable future contributions to the University.
4. An evaluation of the candidate's professional growth and development as presented in section VII.

B. Organizational Chart

This chart should include all of the operational areas of the office within which the candidate is employed, illustrating both the levels of supervision of the candidate and those supervised by the candidate.

C. Explanation of Omission of Materials

An explanation of the omission of any materials or information requested as part of the review file.

D. Candidates Response to Supervisor's Recommendation (This section is optional)

XII. **Certification Statement**

This statement should indicate that, as of a specific date, the candidate, and the immediate supervisor both agree that the contents of the review file are complete and in the order of the above content outline, and that **no changes will be made by any party after that date**. This statement is signed and dated both by the candidate and the immediate supervisor **on the same date listed in the statement**.

**UW-MILWAUKEE
NON-TEACHING ACADEMIC STAFF REVIEW COMMITTEE (NTASRC)
INDEFINITE REVIEW FILE CHECKLIST**

| REQUIRED ITEMS | IN YOUR FILE? | HELPFUL HINTS/TIPS |
|--|---------------|--|
| Table of Contents | | <ul style="list-style-type: none"> Please number the pages of your file. |
| Glossary of Acronyms & Abbreviations | | <ul style="list-style-type: none"> Please list in alphabetical order all acronyms and abbreviations used throughout your file. |
| Current Resume | | <ul style="list-style-type: none"> Reverse chronological listing of employment (starting with most recent) to include all positions at UWM |
| Position Description(s) | | <ul style="list-style-type: none"> Most recent official position description, including percentage breakdown of job duties. If your position description has changed, include all pertinent position descriptions. |
| Contract(s) | | <ul style="list-style-type: none"> Include a copy of your initial probationary contract. If you've had a change in position, title, unit, etc., include all pertinent contracts. |
| Prior Service | | <ul style="list-style-type: none"> If you have been awarded prior years of service, you must either (1) include performance evaluations from the prior years of service granted, or (2) submit a 1–2-page summary of your prior performance, professional service and development, and service to higher education and/or UWM. |
| Performance Reviews (Employee & Supervisor) | | <ul style="list-style-type: none"> Performance reviews should follow the format on the <i>Annual Academic Staff Evaluation Form</i>. For blank/downloadable forms, go to https://panthers.sharepoint.com/:w:/s/HR-Web/ETvf-28v4Z1GIlfGQxfocyYB1dT0PlakKolhVyaaFQjZA?e=E3NxmS. Ensure that all appropriate signatures/dates appear on all self and supervisor evaluations. Put in chronological order starting with your first evaluation. Include all evaluations. If you are submitting your file October through December, it is strongly recommended that you include a self-evaluation for the current year, as you have almost completed another full year of service. We understand that your supervisor may not require you to have this evaluation completed until January but including it in your file enables you to highlight the contributions that you have made most recently. If you are submitting your file in January or February, it is required that you submit your self-evaluation from the previous year. |
| Professional Growth & Development Activities | | <ul style="list-style-type: none"> Membership and participation in Professional/Service Organizations. Participation in Conferences, Workshops, and Seminars. Educational Development, Research, Publications, Special Awards. Service to the community. |
| University Service | | <ul style="list-style-type: none"> The committee is looking for service activities BEYOND the scope of your position, such as active participation on campus committees or work with campus groups outside of your unit. If service is closely related to your assigned job duties, provide a detailed explanation of how it goes beyond the scope of your position. |
| Letters of Reference (3-5) | | <ul style="list-style-type: none"> Letters of Reference should be current (within the past 6 months). |
| Personal Statement | | <ul style="list-style-type: none"> Statement on your strengths, contributions, and commitment to the University as they relate to the review criteria (1-2 pages suggested; 3 pages max.). |
| Recommendation Summary from Immediate Supervisor | | <ul style="list-style-type: none"> The immediate supervisor's recommendation summary should address the candidate's suitability for promotion to indefinite status. |
| Organizational Chart | | <ul style="list-style-type: none"> Please highlight yourself on the chart. |
| Explanation of Omission of Materials | | <ul style="list-style-type: none"> This section should explain any missing documents including any missing performance evaluations and/or signatures. |
| Candidate's Response to Supervisor's Recommendation (optional) | | <ul style="list-style-type: none"> This is optional. |

| | | |
|--------------------------------|--|--|
| Certification Statement | | <ul style="list-style-type: none">• The statement should be dated after all documentation has been submitted. Signatures should have the same date; nothing in your file should be dated after the date on your statement. |
|--------------------------------|--|--|

Editorially revised November 1, 2017;
Revised October 8, 2020
Proposed revision March 14, 2024
Revised per ASC on April 8 and May 20, 2024
Approved ASC May 20, 2024