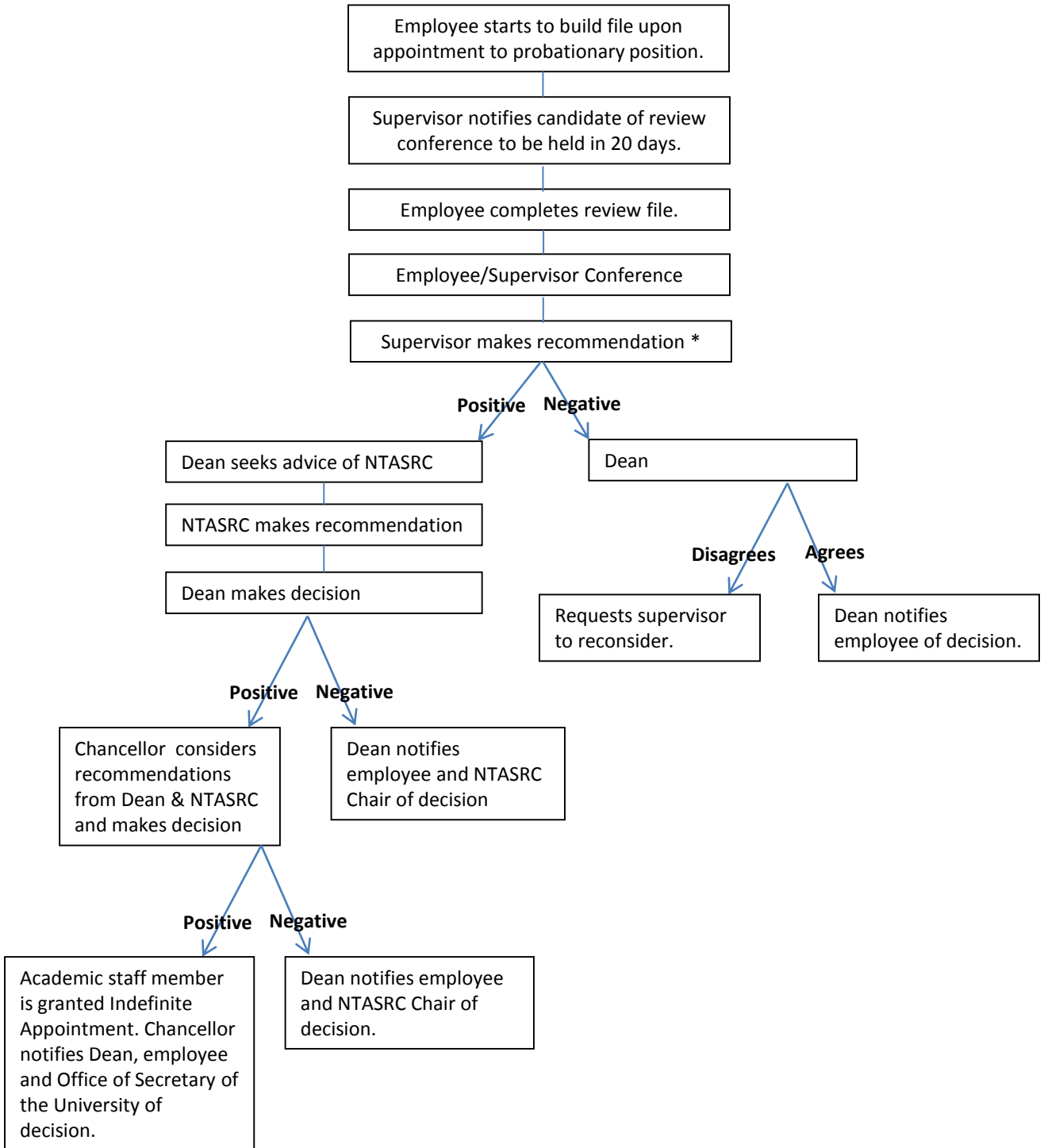


The following diagram represents the review process as described in Chapter 107 of the Academic Staff Personnel Policies & Procedures.

For Promotion to Indefinite Appointment



• In some operating divisions there are intermediate levels of administration. In such cases, the dean/division head may consult with the intermediate supervisor.

** A non-renewal decision may be appealed (see Chapter 106 of the Academic Staff Personnel Policies & Procedures; http://www4.uwm.edu/secu/policies/acad_staff/)