

Barrier Walk Study

Project Prioritization

Barrier Committee

- Representation:
 - Student Accessibility Center
 - R2D2 Center
 - Campus Planning
 - Facility Services
 - School of Architecture

What is a Barrier?

- Any item around campus that causes problems for individuals with varied abilities across:
 - Mobility
 - Cognition
 - Sensory issues:
 - Hearing loss
 - Vision loss
 - Sensory sensitivities

Project Scope

- Barrier descriptions based on guidelines from the 2010 ADA Standards for Accessible Design
- Primarily only exterior issues addressed in this phase
 - Interior issues included:
 - Doors to the outside
 - Push buttons
 - Some restrooms

Background

- 1,711 barriers identified across campus
 - Items grouped into 7 categories based on type:

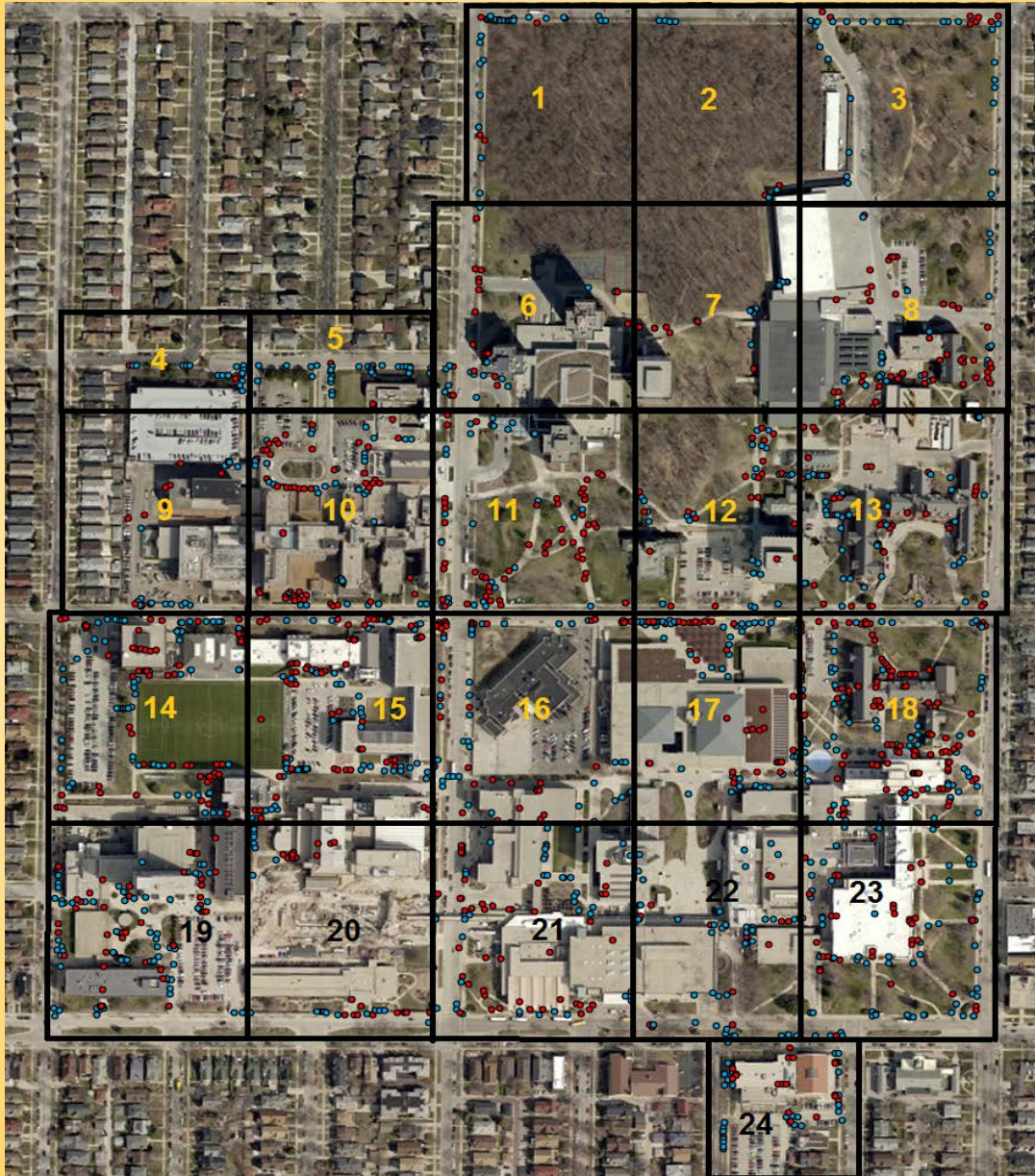
1 - Signage	2 - Routes	3 – Handrails	4 – Stairs
5 – Ramps	6 – Parking	7 - Doorways	

- 30 zones
 - Including 6 parking structures
- Sidewalks identified by study authors as first area to address
 - ***Challenge: How to further prioritize? Greatest impact?***

Background

- 1,263 items identified as routes/sidewalks (74% of tot.)
 - Surface problems, e.g. crumbled concrete : 37% of sidewalk items
 - Vertical change $> \frac{1}{4}$ " : 36%
 - Maintenance (cracks, gaps, curb cuts): 18%
 - Grade of slope exceeds 1:20: 4%
 - Grates: 2%
 - Obstacles present, width of walkways: 1%
 - Miscellaneous: 1%

Zones



Ways to Approach

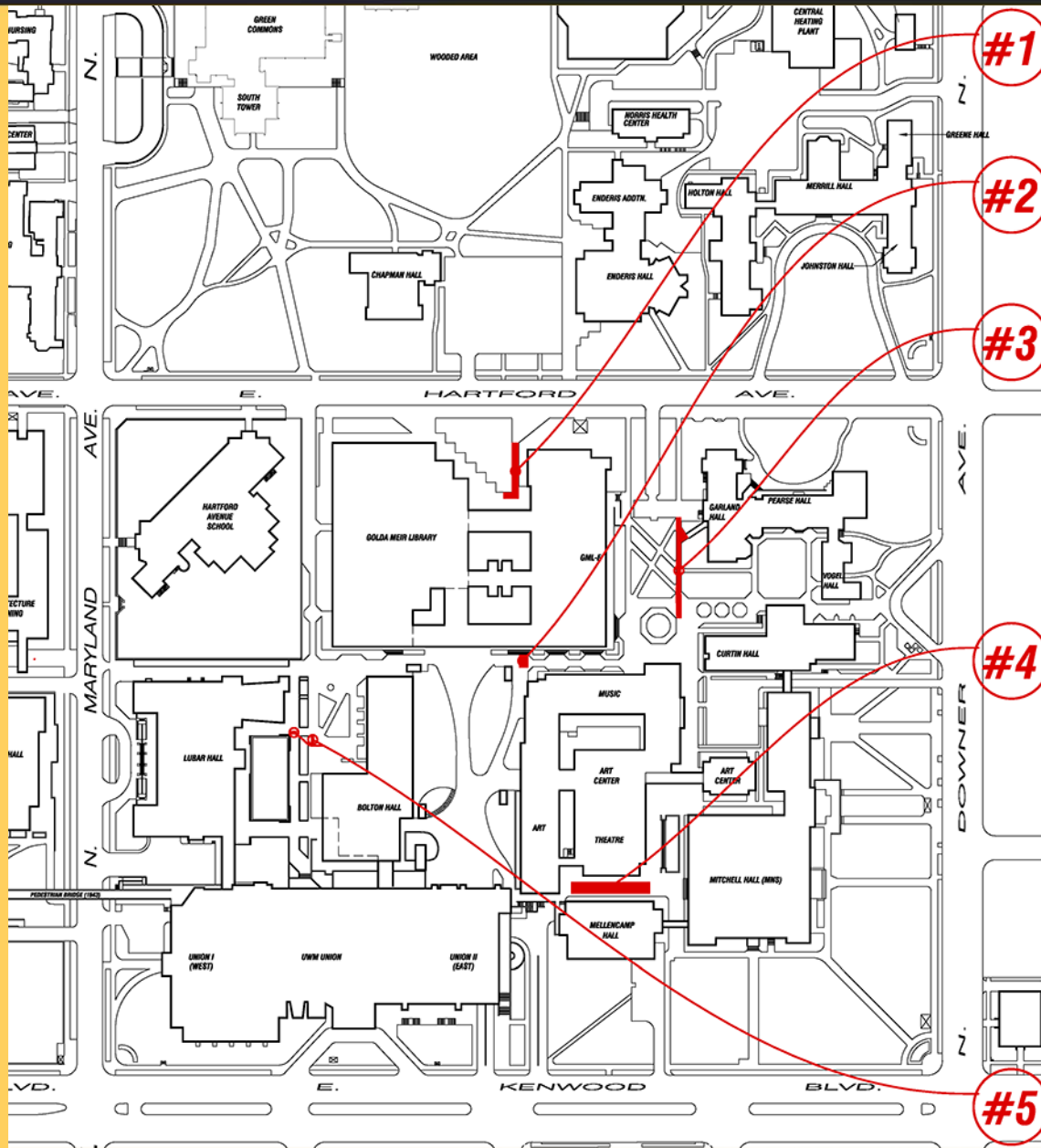
Example options

- Start with sidewalks (Section 2 – Routes) and identify fixes under \$250 each
- Start with barriers identified as severely problematic by student focus group
- Rank projects based on criteria like cost, identification as severely problematic, existence in high traffic areas, or proximity to other barriers/fixes being done

Ranking Example

Zon	Secti	Questi	It	Number	Description	Raw Cost	"Severely Problematic"	Heavily Traffick	Weighted Cost	"Severely Problematic"	Heavily Trafficked	Total
17	2	1	10	17.2.1.10	Sidewalks and floors are not well maintained.	14	15	15	70	60	45	175
17	2	1	11	17.2.1.11	Sidewalks and floors are not well maintained.	14	15	15	70	60	45	175
17	2	1	5	17.2.1.5	Sidewalks and floors are not well maintained.	14	15	15	70	60	45	175
17	2	1	6	17.2.1.6	Sidewalks and floors are not well maintained.	14	15	15	70	60	45	175
17	2	1	7	17.2.1.7	Sidewalks and floors are not well maintained.	14	15	15	70	60	45	175
17	2	1	8	17.2.1.8	Sidewalks and floors are not well maintained.	14	15	15	70	60	45	175
17	2	1	9	17.2.1.9	Sidewalks and floors are not well maintained.	14	15	15	70	60	45	175
21	2	1	10	21.2.1.10	Sidewalks and floors are not well maintained.	14	15	15	70	60	45	175
21	2	1	11	21.2.1.11	Sidewalks and floors are not well maintained.	14	15	15	70	60	45	175
21	2	1	12	21.2.1.12	Sidewalks and floors are not well maintained.	14	15	15	70	60	45	175
21	2	1	13	21.2.1.13	Sidewalks and floors are not well maintained.	14	15	15	70	60	45	175
21	2	1	14	21.2.1.14	Sidewalks and floors are not well maintained.	14	15	15	70	60	45	175
21	2	1	15	21.2.1.15	Sidewalks and floors are not well maintained.	14	15	15	70	60	45	175
21	2	1	16	21.2.1.16	Sidewalks and floors are not well maintained.	14	15	15	70	60	45	175
21	2	1	17	21.2.1.17	Sidewalks and floors are not well maintained.	14	15	15	70	60	45	175
21	2	1	18	21.2.1.18	Sidewalks and floors are not well maintained.	14	15	15	70	60	45	175
21	2	1	19	21.2.1.19	Sidewalks and floors are not well maintained.	14	15	15	70	60	45	175
21	2	1	20	21.2.1.20	Sidewalks and floors are not well maintained.	14	15	15	70	60	45	175
21	2	1	21	21.2.1.21	Sidewalks and floors are not well maintained.	14	15	15	70	60	45	175
21	2	1	22	21.2.1.22	Sidewalks and floors are not well maintained.	14	15	15	70	60	45	175
21	2	1	23	21.2.1.23	Sidewalks and floors are not well maintained.	14	15	15	70	60	45	175
21	2	1	5	21.2.1.5	Sidewalks and floors are not well maintained.	14	15	15	70	60	45	175
21	2	1	6	21.2.1.6	Sidewalks and floors are not well maintained.	14	15	15	70	60	45	175
21	2	1	7	21.2.1.7	Sidewalks and floors are not well maintained.	14	15	15	70	60	45	175
21	2	1	8	21.2.1.8	Sidewalks and floors are not well maintained.	14	15	15	70	60	45	175
21	2	1	9	21.2.1.9	Sidewalks and floors are not well maintained.	14	15	15	70	60	45	175
16	2	13	47	16.2.13.47	Heights of trees along Architecture building sidewalk vary but hang lower than 80" in places.	15	15	14	75	60	42	177
11	2	1	10	11.2.1.10	Sidewalk or floor not well maintained.	14	15	14	70	60	42	172
11	2	1	11	11.2.1.11	Sidewalk or floor not well maintained.	14	15	14	70	60	42	172
11	2	1	4	11.2.1.4	Sidewalk or floor not well maintained.	14	15	14	70	60	42	172
11	2	1	5	11.2.1.5	Sidewalk or floor not well maintained.	14	15	14	70	60	42	172
11	2	1	6	11.2.1.6	Sidewalk or floor not well maintained.	14	15	14	70	60	42	172
11	2	1	7	11.2.1.7	Sidewalk or floor not well maintained.	14	15	14	70	60	42	172
11	2	1	8	11.2.1.8	Sidewalk or floor not well maintained.	14	15	14	70	60	42	172
11	2	1	9	11.2.1.9	Sidewalk or floor not well maintained.	14	15	14	70	60	42	172
17	2	1	4	17.2.1.4	Sidewalks and floors are not well maintained.	14	15	14	70	60	42	172
16	2	1	10	16.2.1.10	Notoriously bad intersection of Maryland and Hartford has been written up before. Issues have not changed. See map for details.	14	15	14	70	60	42	172

FY 2015-16 Work



Next year's work:

- Area around Pearse Hall
- Some sections of sidewalk between Physics and EMS

Next Steps

- Identify interior barriers and wayfinding issues
- Integrate incident reporting features into redeveloped campus app?
- Custodial Services may start routinely checking exterior door push buttons for inoperability
- Student feedback group early next semester
 - Include individuals with disabilities to look at practical applications surrounding barriers.

ArcGIS URL

- Feedback
- Questions
- Comments