

We Are Here to Help!

Our mission is to provide assistance to students and their families in meeting the financial costs of attaining a degree in higher education.

This supports the University's goals of encouraging economic, social, cultural, and academic diversity in the student body by providing educational opportunity to all students.

POWERFUL IDEAS | **PROVEN RESULTS** |



Department of Financial Aid,
Student Employment, and
Military Education Benefits
University of Wisconsin-Milwaukee
2442 E. Kenwood Blvd.
Mellencamp Hall. Room 162
Milwaukee, WI 53201-0469

Office Hours

Monday: 8AM – 6PM (when classes are in session)

Tuesday – Friday: 8AM – 4:30PM

Phone: (414)229-4541

Fax: (414)229-5699

Advising

In person advising: Offered by appointment only. Please stop in or call to schedule.

Phone advising is available during our office hours.

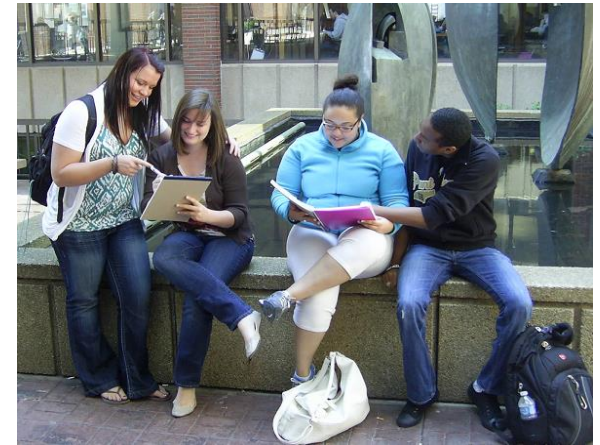
Hours subject to change just prior to the start of each semester. Check our web page for current hours.

Helpful Links

www.financialaid.uwm.edu

- “Academic Progress Standards”
- “Eligibility Requirements”
- “Ask the Panther”

Satisfactory Academic Progress Standards (SAP)



Department of Financial Aid,
Student Employment, and
Military Education Benefits

Academic Progress Standards

University and federal regulations require that a student be making satisfactory academic progress (SAP) toward a degree to be eligible for financial aid. SAP consists of two components of measurement: qualitative and quantitative. A student's SAP is reviewed on a semester by semester basis.

Timeframe

All students are expected to finish their program within a maximum timeframe (150% for undergraduates; 200% for graduates) that cannot exceed the number of credits required to complete a degree. All credits are counted in Timeframe, even those for which the student did not receive financial aid.

Academic Classification	Required Credits	Maximum Timeframe
Undergraduate	120	180
Graduate – Masters	30*	60
Graduate – Master's 30+	36*	72
Graduate - Doctoral	54*	108
Special Certification Program	15	22
Teaching Certification	36	54
Second Bachelor's	120	180

* The required credits are the general published number of credits required to obtain a degree. Actual required credits may be more or less depending on the specific academic career choice. Additional classifications available on our website:

http://www4.uwm.edu/financialaid/EligConsInfo/academic_progress_standards.cfm

Pace

Financial aid recipients must demonstrate measurable progress toward earning a degree by successfully completing a percentage of all attempted credits at UWM. The required percentage is two-thirds (66.67%) for undergraduates and half (50%) for graduate students. A student's Pace is measured at the end of each semester.

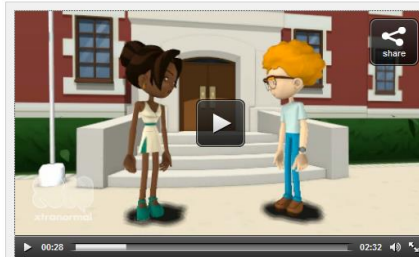
Pace = Total Completed Credits/Total Attempted Credits

Attempted credits are determined as of the tenth day of classes for fall and spring semesters (also known as the "Census Date"). If the student withdraws before the census date, enrollment is determined as of the date of disbursement. Additional information regarding census dates for special terms can be found on our website.

Pace is cumulative. All credits are counted, including:

- Transfer Credits
- Remedial Credits
- Repeated Coursework
- Incomplete Courses
- Withdrawals
- Consortium and Study Abroad Credits

Students must also maintain a 2.0 cumulative GPA or one consistent with their program's requirements for graduation. Academic cancellation by the school or college will cause the student to become ineligible for aid.



What Happens If I Do Not Meet SAP?

Students who do not meet the Timeframe component of SAP will immediately become ineligible for aid. Students who do not meet the Pace component of SAP will get one semester of "Warning" status. If they are unable to regain the required Pace following that semester, they will become ineligible.

SAP Appeals

Students can appeal their ineligible SAP status by speaking with a Financial Aid Advisor (either on the phone or by scheduling a meeting). Students must have a non-academic extenuating circumstance that has prevented them from meeting the SAP standards and must also be able to demonstrate that this circumstance has been resolved. Some examples include medical and/or personal issues. In addition, students who have exceeded Timeframe may appeal if they've changed majors or transferred.

Assuming an appeal is granted, students will be granted a semester of financial aid eligibility on "Probationary" status. They will be expected to regain satisfactory Pace by the end of that semester to remain eligible.

Academic Plans

All students who appeal Timeframe as well as students who cannot mathematically regain Pace within a single semester will also need to complete an Academic Plan with their Academic Advisor in order to become eligible for aid.

The Academic Plan will specify the number of credits a student must complete each semester in order to graduate or regain Pace. The student will be expected to complete 100% of credits required by the academic plan in order to maintain financial aid eligibility.