

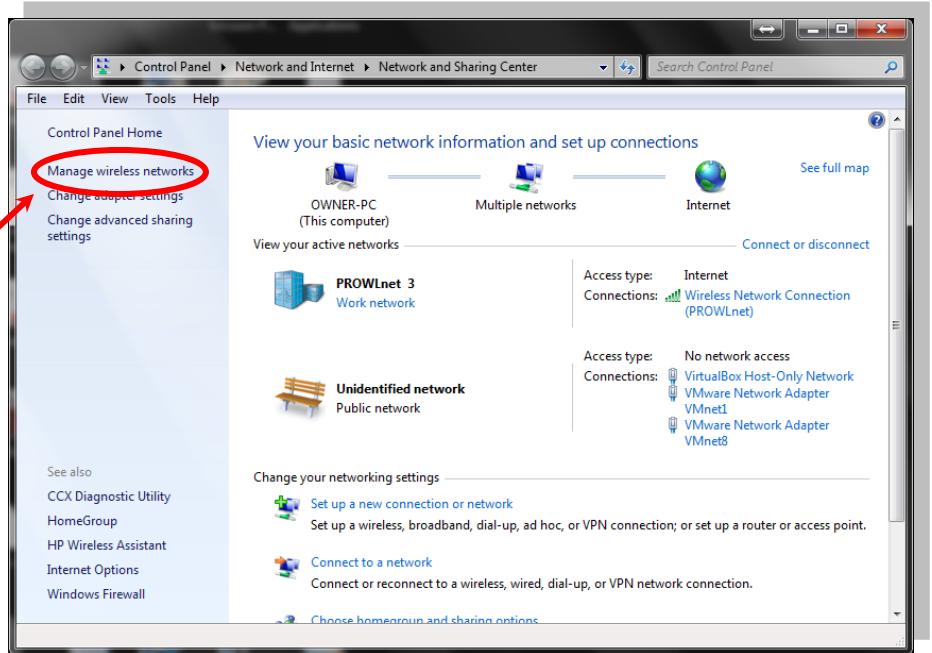
# Windows Vista Set-up to Connect to the “eduroam” Option

**NOTE 1:** To complete the set-up process and connect, you must be in a building with UWM WiFi. Visit the Student Union, Golda Meir Library and other select UWM buildings. To view the [building list](#), visit [UWMWiFi.uwm.edu](http://UWMWiFi.uwm.edu), click on “WiFi Availability” link.

## Step #1:

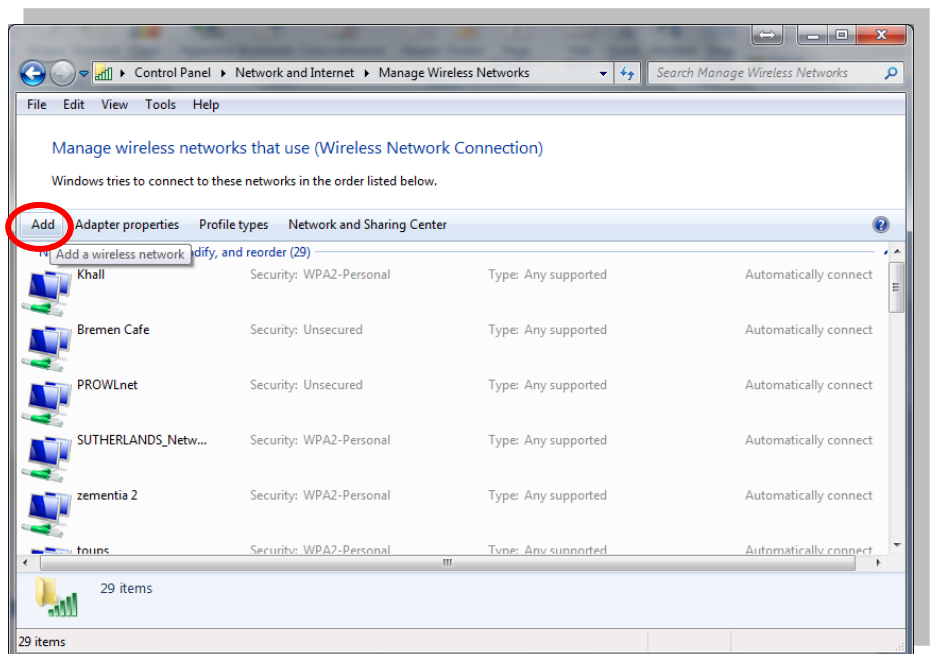
Navigate to: Start>Control Panel> Network and Internet>Network and Sharing Center

Click “Manage wireless networks” (located on the left panel)



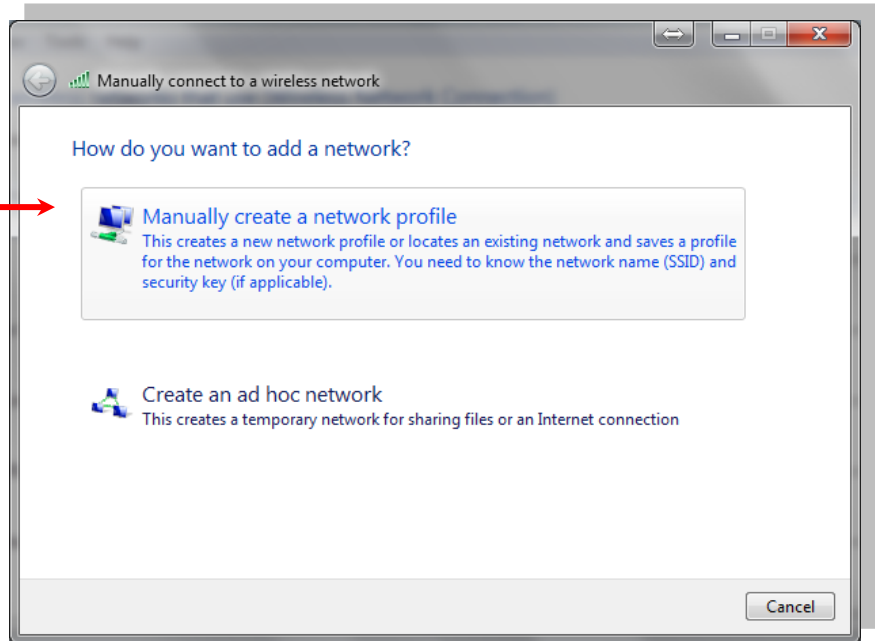
## Step #2:

Click “Add”



**Step #3:**

Click "Manually create a network profile"



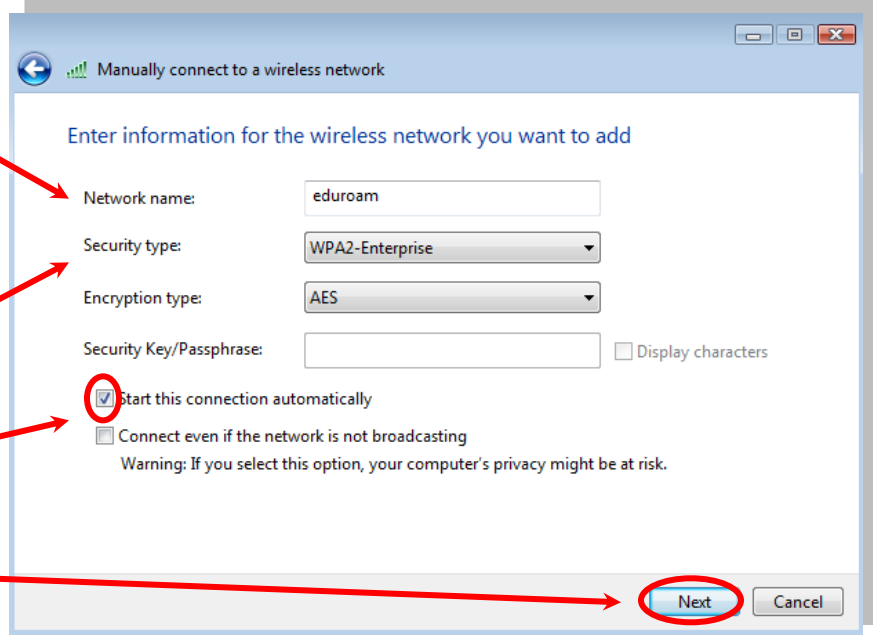
**Step #4:**

Enter Network Name: eduroam (no spaces)

Select the following:  
Security type: WPA2-Enterprise  
Encryption type: AES

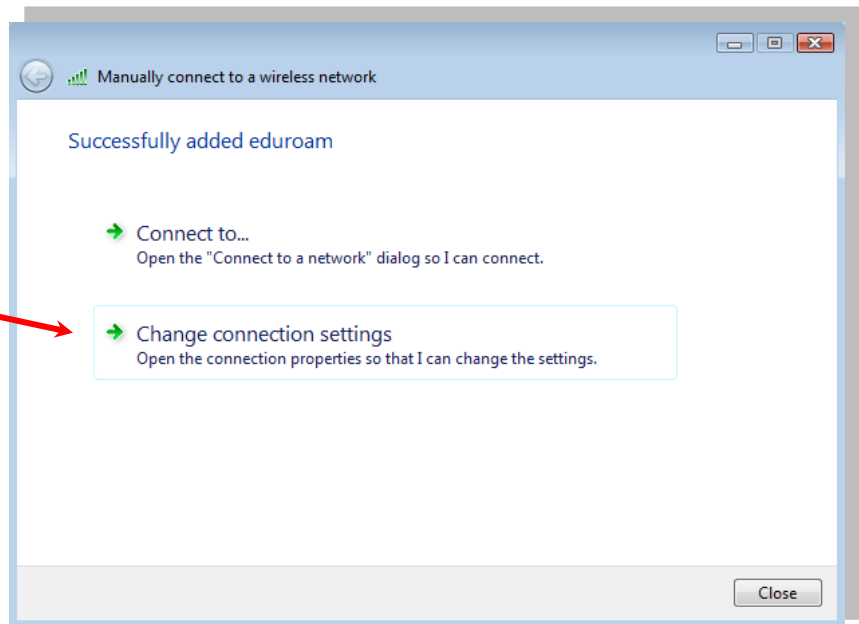
Ensure box is checked

Click "Next"



**Step #5:**

Click:  
"Change connection settings"



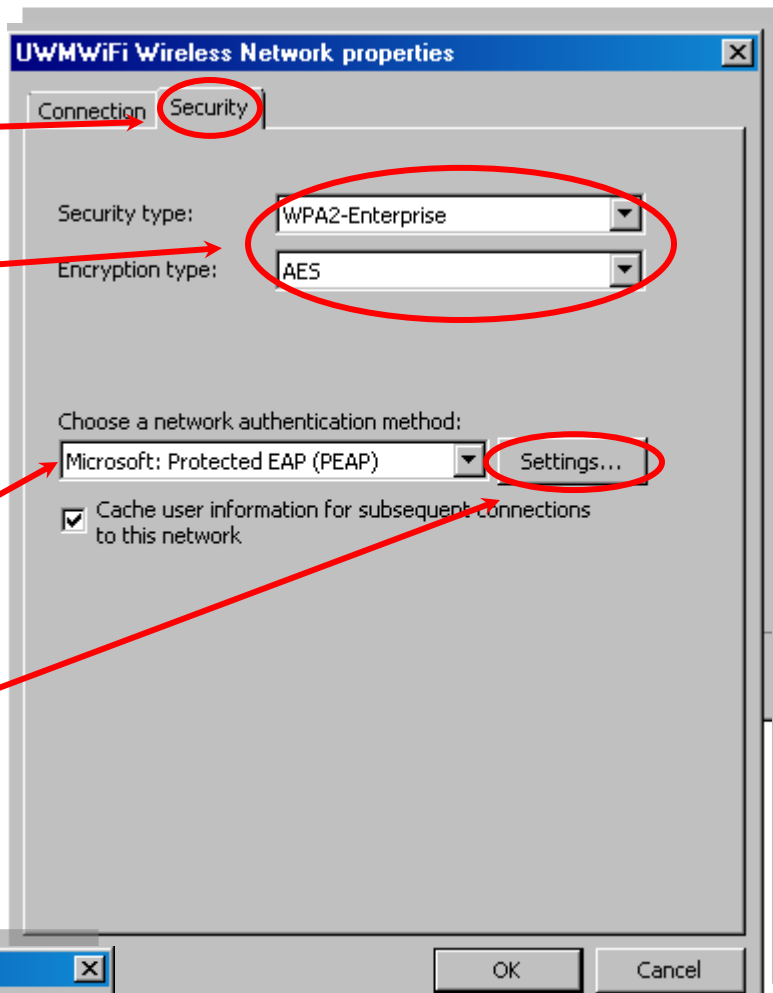
**Step #6:**

Select the "Security" tab

Ensure these settings are used:

Security type: WPA2-Enterprise

Encryption type: AES

**Step #7:**

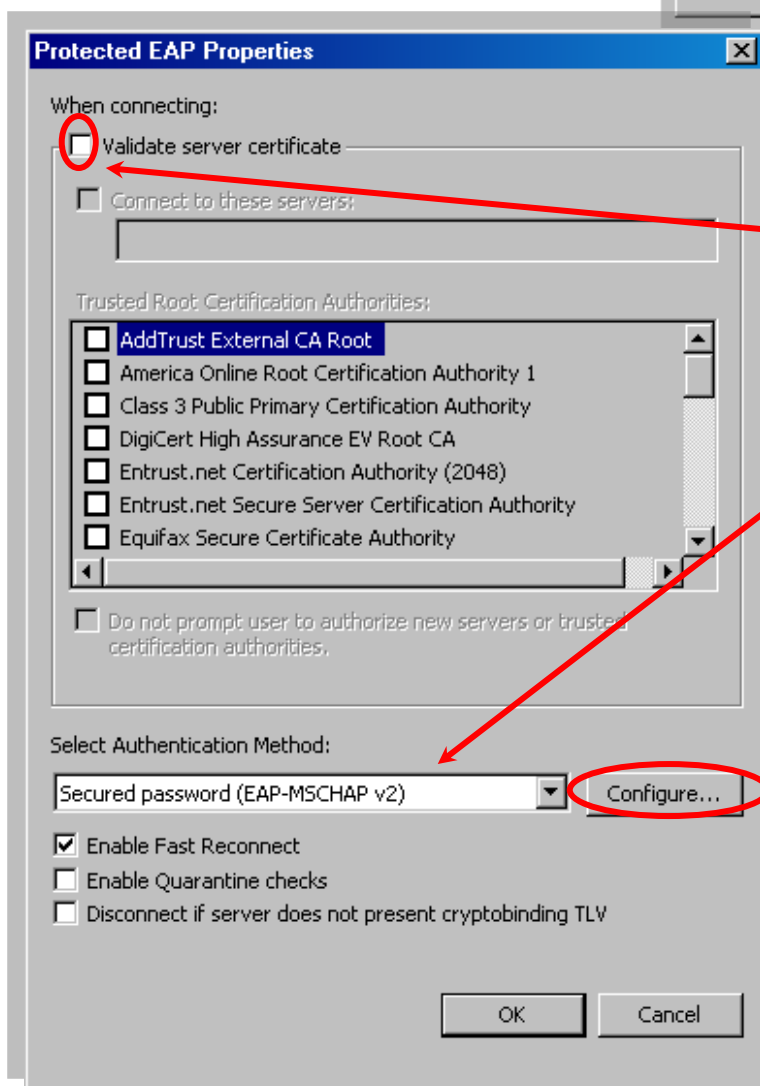
Under:

Choose a network authentication method:

Select "Microsoft: Protected EAP (PEAP)"

**Step #8:**

Click "Settings"

**Step #9:**

Uncheck "Validate server certificate"

**Step #10:**

Under Select Authentication Method:  
Select "Secured Password (EAP-MSCHAP v2)"

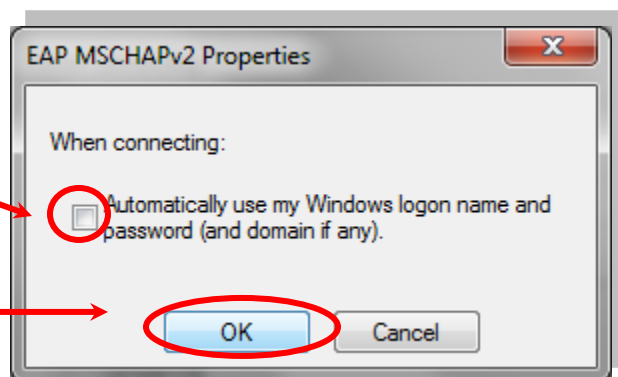
**Step #11:**

Click "Configure"

### Step #12:

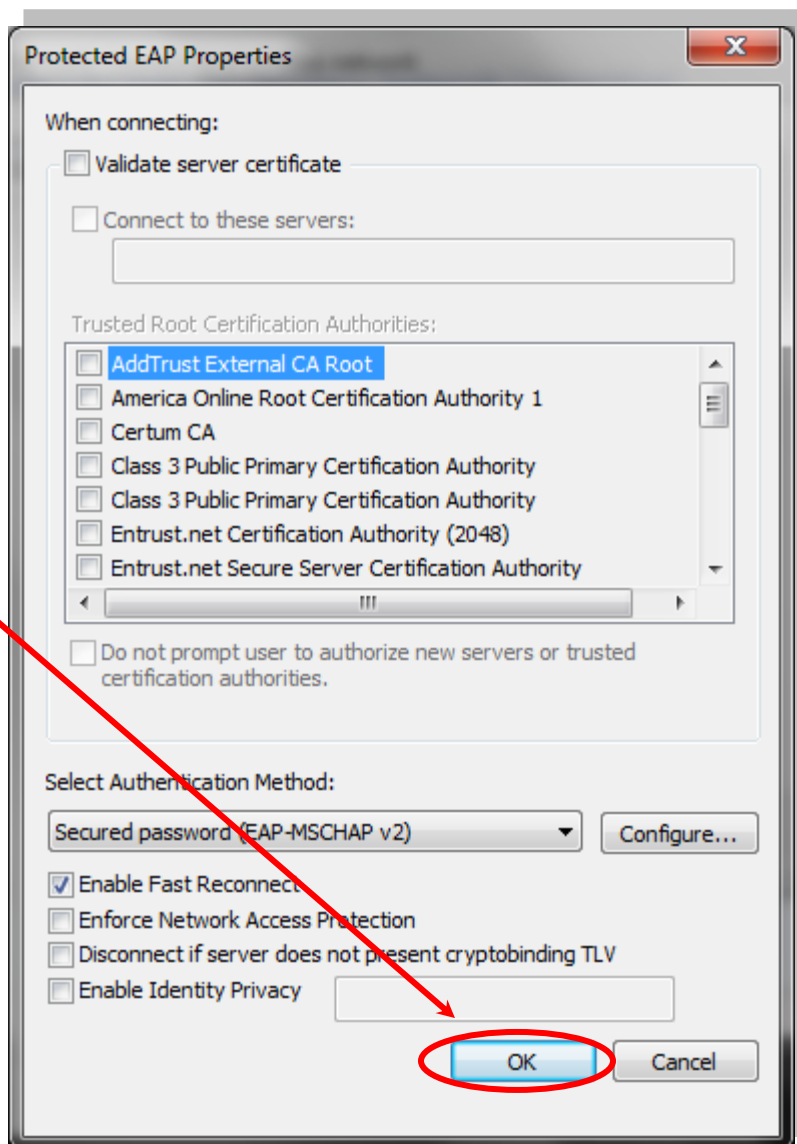
Uncheck "Automatically use my Windows logon name and password (and domain if any)"

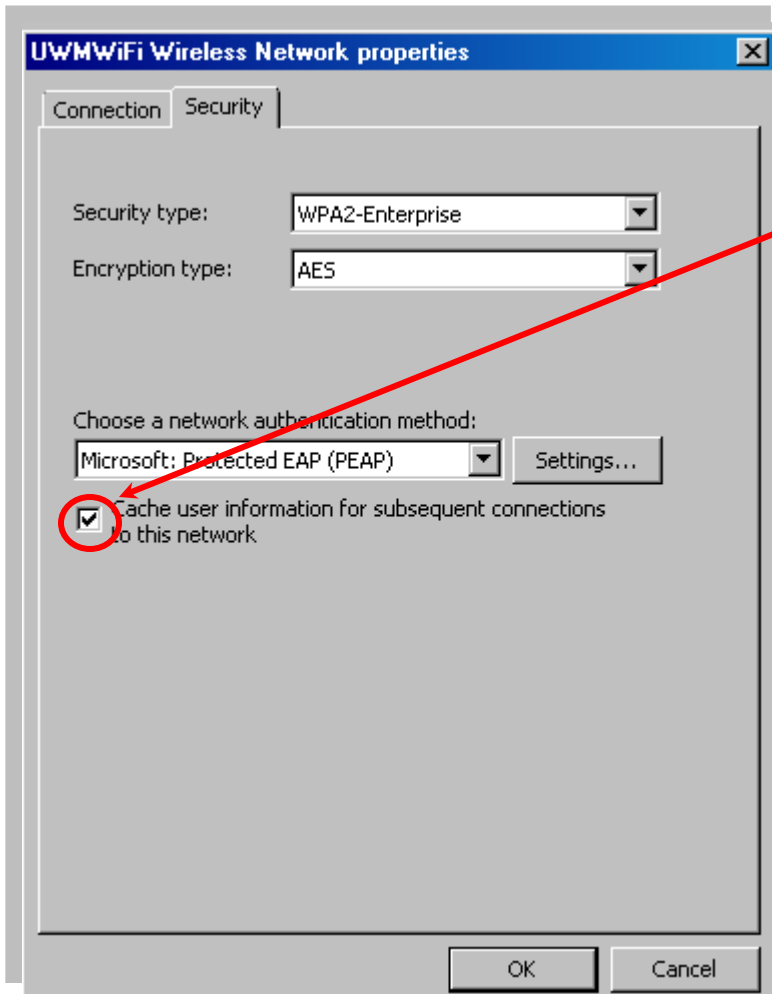
Click "OK"



### Step 13:

At the "Protected EAP Properties" dialogue box, click "OK"





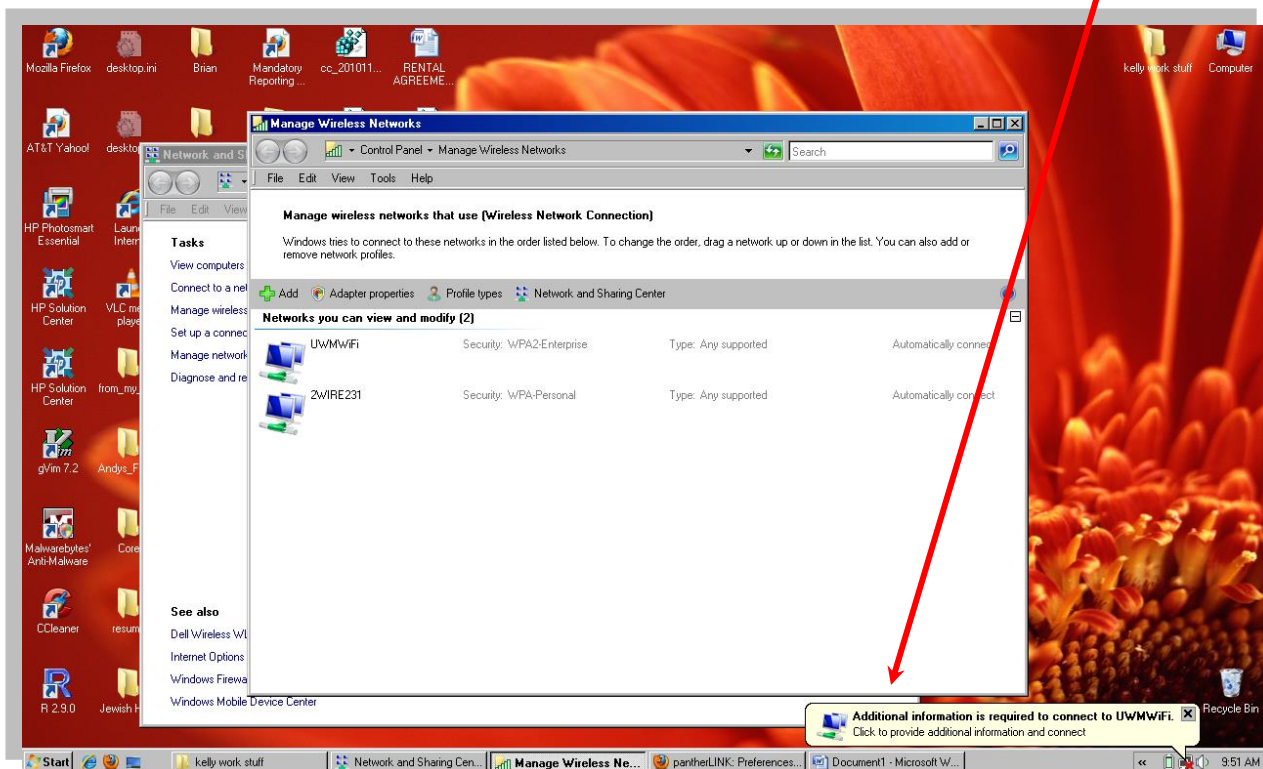
### Step #14:

At the “Security” tab of the properties dialogue box, ensure that the “Cache user information ...” box is checked to enable single sign-on option

### Step 15:

You will be prompted for additional information via a small pop-up in the lower right corner of your desktop.

Click on it to enter your information.



**Step #16:**

When prompted, enter your home institution's user name as well as your home domain in the "username field" and then the corresponding password in the "password field."

**For UWM faculty, staff and students, enter your ePantherID@uwm.edu.**

DO NOT enter a "Logon domain"

Click "OK"

This device should now be set up to use the secure "eduroam" option. If you cannot connect:

- Update Windows: <http://update.microsoft.com/microsoftupdate/>
- Make sure your device is virus-free.
- If above steps taken, try these instructions again.



**Support for members of the UWM Community visiting other eduroam-member locations:**

Before you visit another eduroam location, make sure you configure your device to work with the eduroam wireless network at UWM.

If your device can successfully connect to eduroam at UWM you should not need to make any changes to use your device when at another eduroam location.

**Support for visitors to the UWM campus:**

Before you visit UWM, make sure you configure your device to work with the eduroam wireless network at your home institution.

If your device can successfully connect to eduroam at your home institution you should not need to make any changes to use your device at UWM. Please note that UWM cannot assist you in configuring your wireless device and can only answer questions regarding availability of the eduroam service at UWM.