

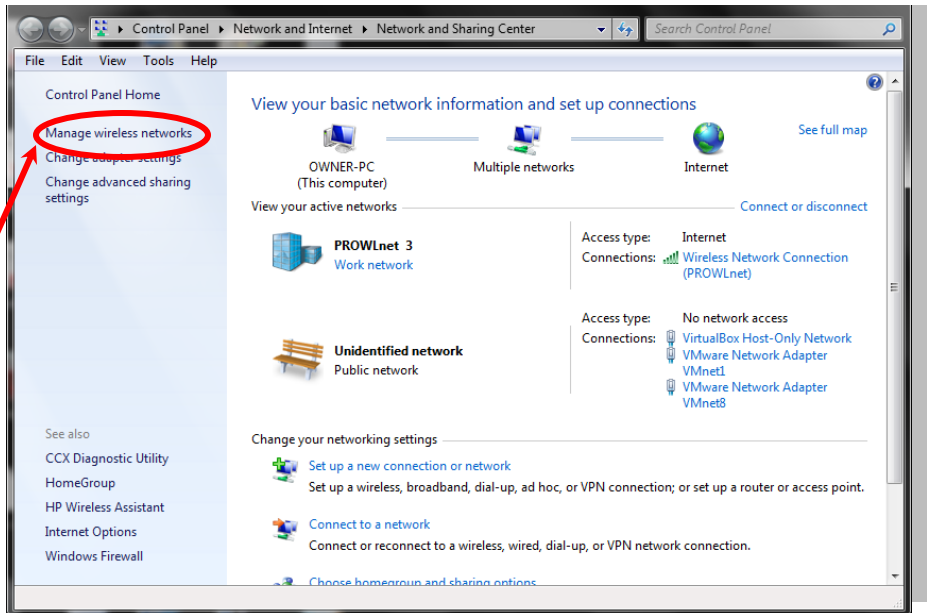
NOTE 1: To complete the set-up process and connect, you must be in a building with UWM WiFi. Visit the Student Union, Golda Meir Library and other select UWM buildings. To view the [building list](#), visit UWMWiFi.uwm.edu, click on “WiFi Availability” link.

Step #1:

Navigate to:

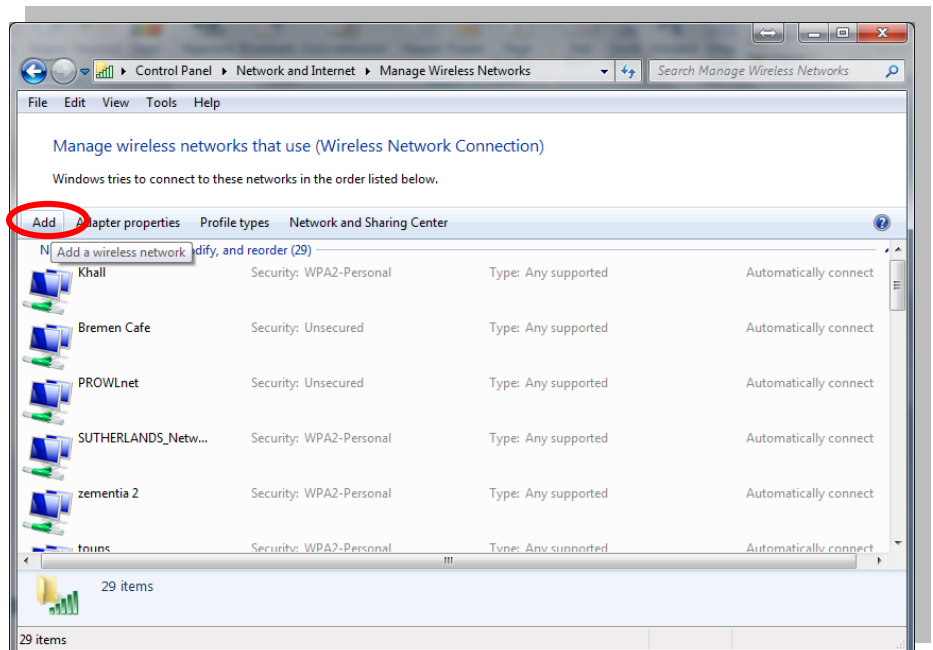
Start>Control Panel>Network and Internet>Network and Sharing Center

Click “Manage wireless networks”



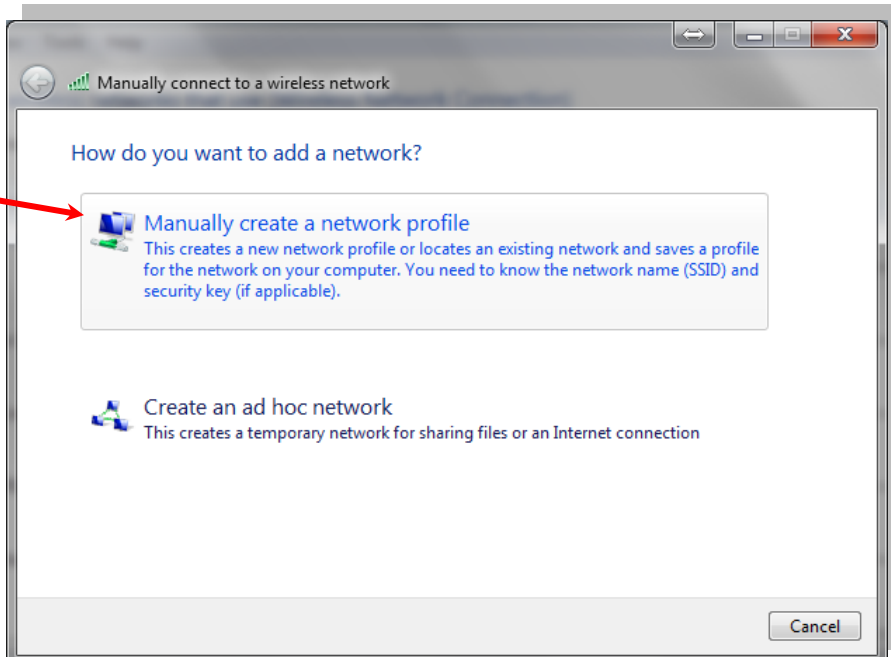
Step #2:

Click “Add”



Step #3:

Click "Manually create a network profile"



Step #4:

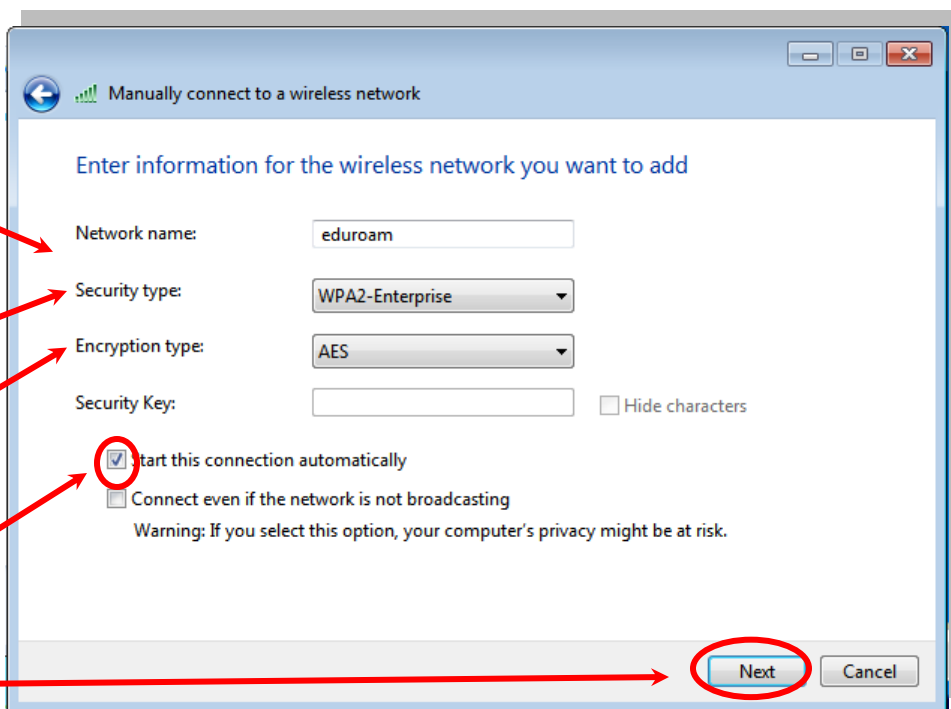
Enter Network name:
eduroam (do not
capitalize name)

Select Security type:
WPA2-Enterprise

Select Encryption type:
AES

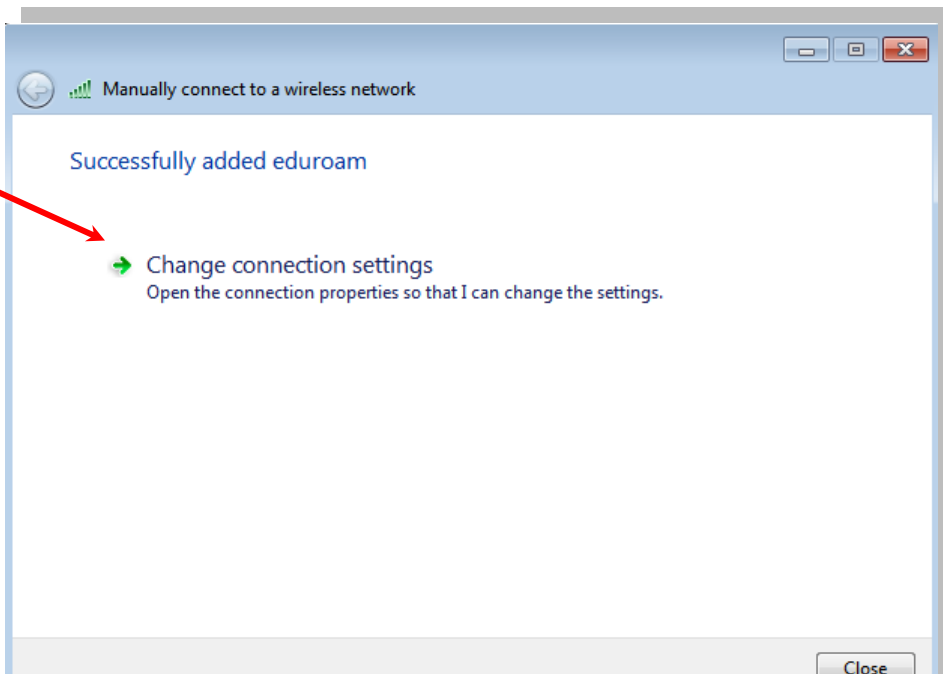
Ensure this box is checked

Click "Next"



Step #5:

Click "Change connection settings"



Step #6:

Select the "Security" tab

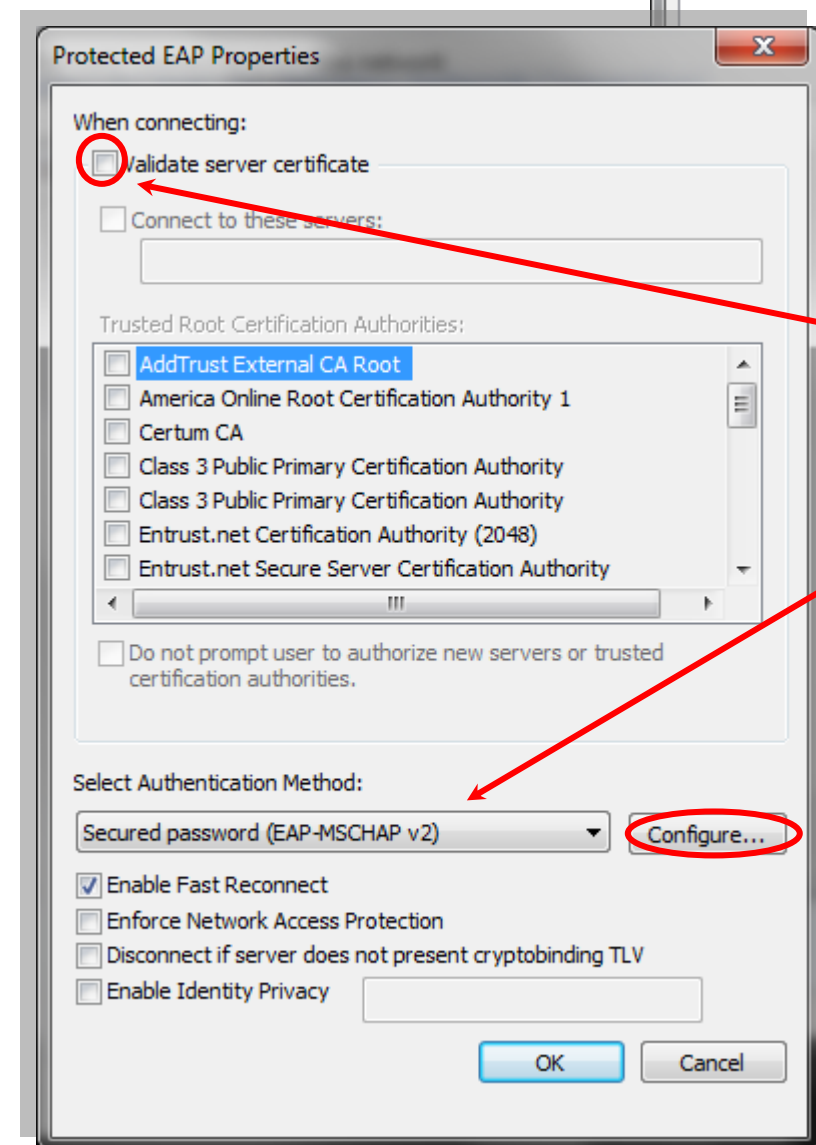
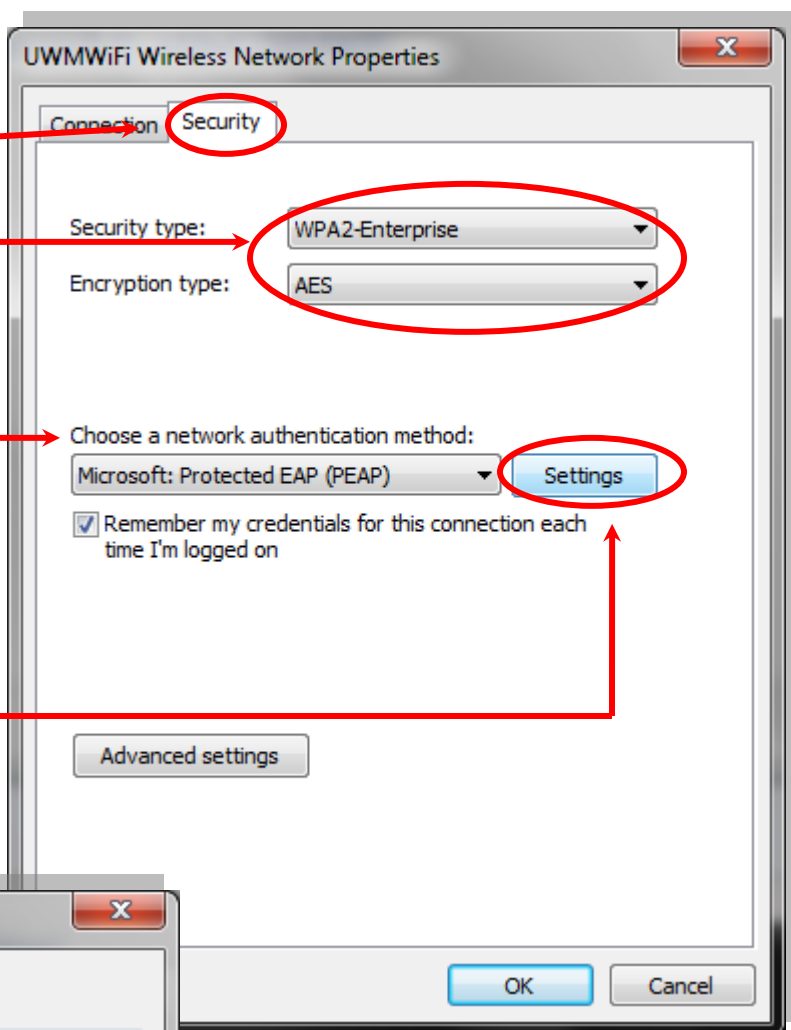
Ensure these settings are used

Step #7:

Under "Choose a network authentication method:" select "Microsoft Protected EAP (PEAP)"

Step #8:

Click "Settings"

**Step #9:**

Uncheck "Validate Server Certificate"

Step #10:

Under Select Authentication Method: select "Secured password (EAP-MSCHAP v2)"

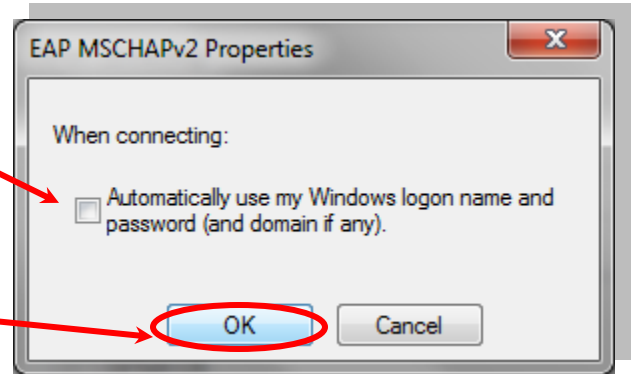
Step #11:

Click "Configure"

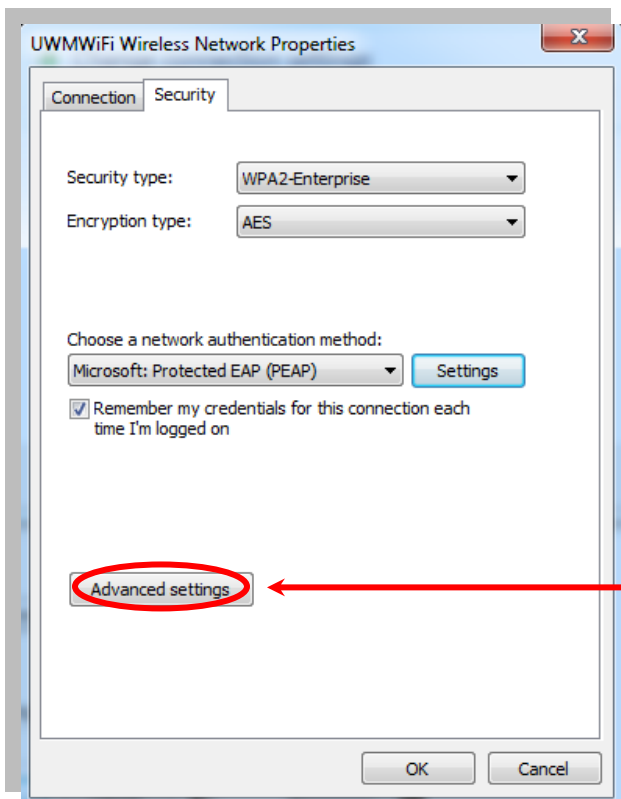
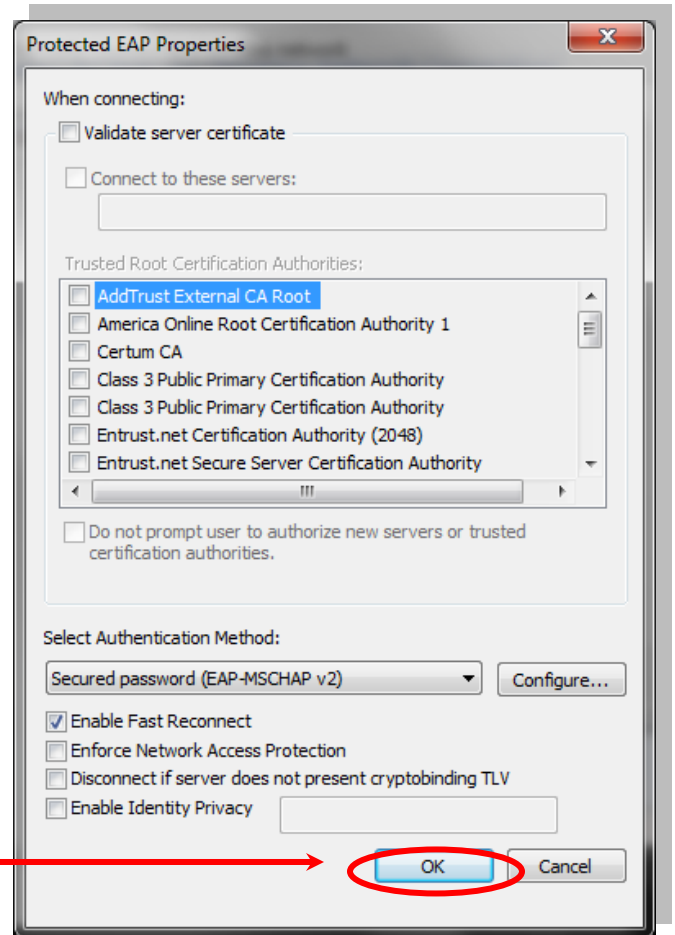
Step #12:

Uncheck “Automatically use my Windows logon name and password (and domain if any).”

Click “OK”

**Step #13:**

At the “Protected EAP Properties” dialogue box, click “OK”

**Step #14:**

At the “Security” tab of the properties dialog box, click “Advanced settings”

Step #15:

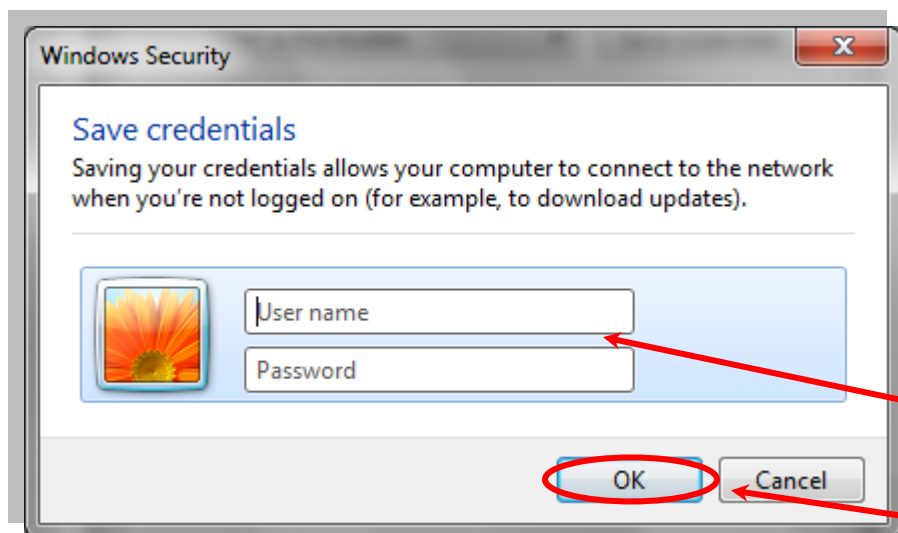
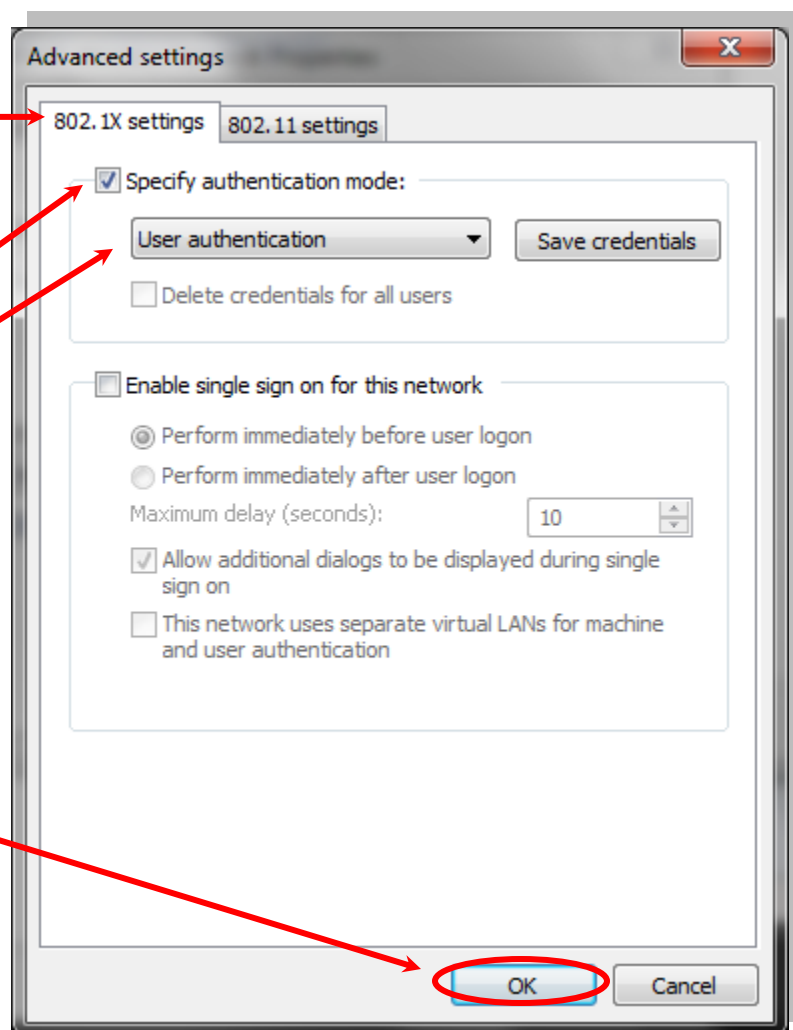
Select the "802.1X settings" tab

Step #16:

Check "Specify authentication mode"

In the dropdown menu, select "User authentication"

Click "OK"

**Step #17:**

When prompted, enter your home institution's user name as well as your home domain in the "username field" and then the corresponding password in the "password field."

For UWM faculty, staff and students, enter your ePantherID@uwm.edu.

Then Click "OK"

Step #18:

You are now connected to eduroam.



This device should now be set up to use the secure “eduroam” option when visiting an eduroam participating institution. If you cannot connect:

- Update Windows: <http://update.microsoft.com/microsoftupdate/>
- Make sure your device is virus-free

**Support for members of the UWM Community visiting other eduroam-member locations:**

Before you visit another eduroam location, make sure you configure your device to work with the eduroam wireless network at UWM.

If your device can successfully connect to eduroam at UWM you should not need to make any changes to use your device when at another eduroam location.

Support for visitors to the UWM campus:

Before you visit UWM, make sure you configure your device to work with the eduroam wireless network at your home institution.

If your device can successfully connect to eduroam at your home institution you should not need to make any changes to use your device at UWM. Please note that UWM cannot assist you in configuring your wireless device and can only answer questions regarding availability of the eduroam service at UWM.