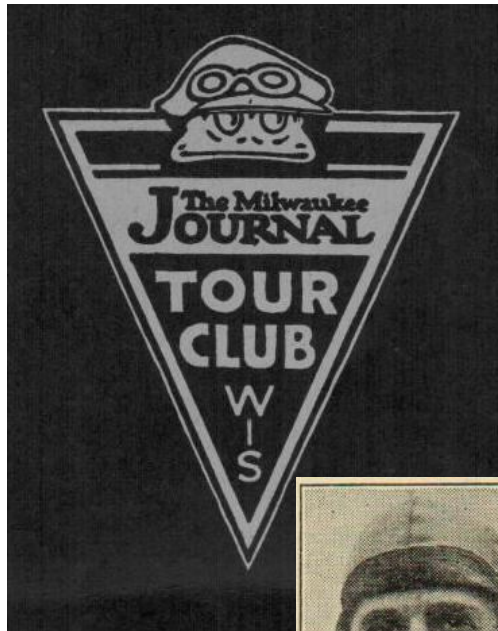
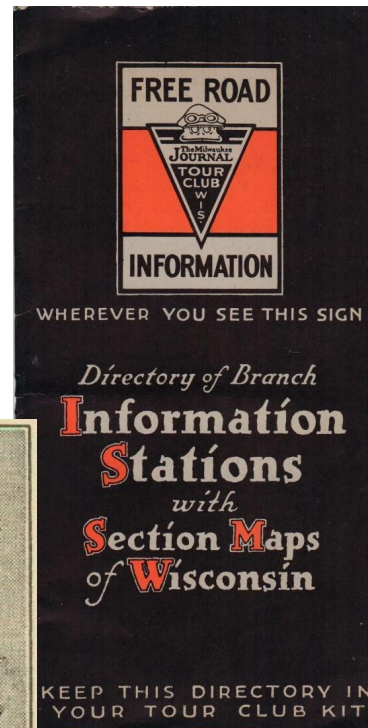
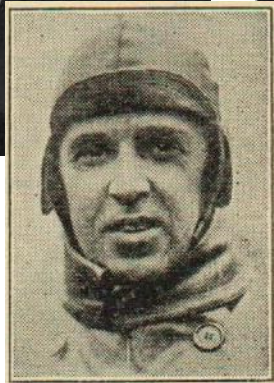


THE MAP SOCIETY OF WISCONSIN



Milwaukee Journal writer William W. Rowland, founder of the Journal Tour Club in 1920 (courtesy of Judy Aulik).



“The MILWAUKEE JOURNAL TOUR CLUB, and its Highway Signage and Extensive Highway Map Program”

A presentation by
Judy Aulik, PhD
Past President,
Road Map Collectors Association,
Downers Grove, IL

Sunday, April 23, 2017
Presentation begins at 2:00 pm

At the
American Geographical Society Library
3rd Floor, East Wing,
Golda Meir Library Building
University of Wisconsin-Milwaukee
2311 E. Hartford Ave.
Milwaukee, WI 53211

Join us at 1:30 pm for socializing & light refreshments

Questions? Call (414)-229-6282 or email agsl@uwm.edu