

## Wacom Drawing Tablet Policies

- I agree to pay the overdue fine of **\$5.00/hour per part**, if I fail to return the Drawing Tablet or its accessories to the Media and Reserve Library's desk on time.
- I understand that while this Drawing Tablet is in my possession, I am responsible for it at all times. **I WILL NOT GIVE THE DRAWING TABLET TO ANYONE ELSE. I WILL NOT LEAVE THE EQUIPMENT UNATTENDED.** The Equipment must be returned only to the Media and Reserve Library.
- I will immediately report any loss or damage of the Drawing Tablet or its accessories to the Media and Reserve Library. I agree to pay all costs associated with damage to, loss of, or theft of the equipment and its accessories (up to the **\$200** replacement fee) while it is checked out to me.
- I will return the Drawing Tablet clean and free of foreign substances or risk being charged an equipment cleaning fee.
- Library Drawing Tablets are for educational and research purposes, and I will abide by the Student Code of Conduct, the Computing Policy and Guidelines and all other applicable UWM policies. The Drawing Tablet may not be used for illegal activities including, but not limited to: disruption of other users /services/equipment, harassment, distribution of unsolicited advertising, propagation of computer viruses, and attempts to make unauthorized entries into other computers.
- I will not tamper with the Drawing Tablet hardware or software.

- I agree that the Library is not responsible for any files created or accessed on the Drawing Tablet or for loss of, or damage to, data during the loan period.
- **All Drawing Tablets must be returned before the Media and Reserve Library closes.**
- I will not leave the Drawing Tablet on the Media and Reserve Library desk unless a staff member is present. I will wait for Library staff as they fulfill obligations to inventory components, test Drawing Tablet operations, and provide me with a receipt if requested.
- Borrowers should be proficient in the use of the hardware/software they plan to access. Library staff does not provide assistance in the use of either hardware or software.
- I acknowledge that all equipment has been examined by library staff prior to checkout, and that only complete and functioning equipment and accessories will be circulated to me. I will perform an inspection myself before leaving with any borrowed equipment, to ensure that everything is functioning properly.

## Questions?

**Media and Reserve Library**  
(414) 229-4673  
Email: [libmedia@uwm.edu](mailto:libmedia@uwm.edu)  
Website: <http://uwm.edu/libraries/media/>

revised 3/12/18



# UWM LIBRARIES Wacom Intuos Photo Drawing Tablet Small

## Brief Guide

**\*\*\*Handle with Care\*\*\***



## Wacom Drawing Tablet

The UWM Libraries are pleased to make Wacom Intuos Small Digital Drawing Tablet available for use by current UWM Faculty, Staff and Students with their current, valid UWM ID. The small drawing tablet comes with a USB cord, pen, blue pen case, anti-static cloth and tablet carrying case.

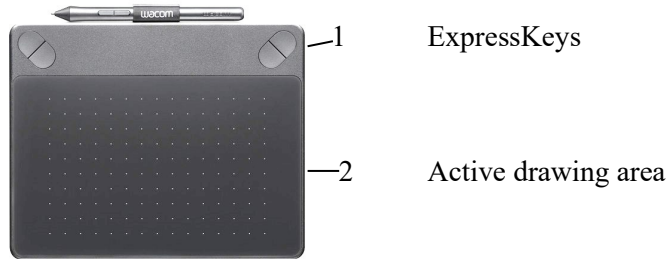
## Getting Started

1. Connect the drawing tablet to a computer. (Note compatibility section)
2. Install the driver software on the computer. **Software is based on computer's operating system - old drivers may not recognize new tablets.** <https://www.wacom.com/en-us/support/product-support/drivers>
3. Reboot computer. You may have to unplug the tablet from the computer during reboot.

## Cleaning

- Clean the tablet using the enclosed anti-static cloth and light pressure.
- **Warning: Do not use cleaning wipes, alcohol or detergent to clean the drawing tablet.**

## Features



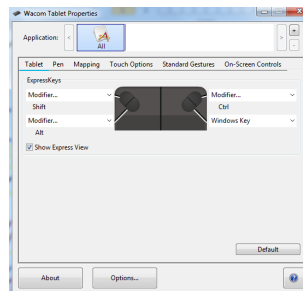
## Pen

Hold the pen as you would normally hold a pen or pencil. Adjust your grip so that you can press any pen buttons easily with your thumb (recommended) or index finger without accidentally pressing it. Pens are pressure-sensitive, so the harder you press, the thicker your lines and the denser the color.

**Important:** Store the pen laying down in the accompanying case so there is no pressure on the pen tip. Do not leave pen laying on drawing tablet or it will interfere with the computers' mouse functions.

## System Preferences – Open Wacom Tablet Properties on Computer

- Four customizable ExpressKeys that put your favorite shortcuts like undo or copy/paste at your fingertips



## Software

This Wacom tablet can be used to draw in programs such as Adobe InDesign, Illustrator or Photoshop.

## Compatibility

This Wacom Tablet is not compatible with the Libraries' Chromebooks or MacBooks. The Wacom driver software is on the both the PCs and the Macs in the campus CCLs.