

**daxa**  
TECHNOLOGIES

---

**P300** **NEO**  
Pico Projector



**User Guide**

# Caution!

WARNING: Please use this product as instructed. Misuse may cause injury or death.

DO NOT use while driving

DO NOT expose to water or wet surfaces. Electric shock may occur

DO NOT expose the projected LED image to your eyes or the eyes of others

DO NOT block or restrict airflow from ventilation holes as this may cause the projector to overheat

Keep the projector, battery, or charger away from any heat sources

## Caution for Battery Use

- Do not pierce or puncture the battery with sharp objects
- Do not heat the product or expose it to high temperature.
- Do not wet it or place it in any liquid

## Caution for Headphone Use

- Prolonged use at high volume may impair your hearing.
- High volume during walking or driving may cause distractions and result in injury or death

# Table of Contents

## Chapter 1: P300 Neo at a Glance

P300 Neo Introduction	1
Remote & Touchpad	2
Accessories	3

## Chapter 2: Getting Started

Powering On / Off	4
Focus Adjustment / Throw	
Distance	5
External Inputs/Outputs	6
Connecting to a Computer VGA	7
Connecting to a Digital Input	9
Connecting to Composite Video	11
Connecting to Digital Input Video	13
Connecting to Speakers or	
Headphones	15

Connecting a TF Card	16
----------------------	----

Connecting a USB Stick	18
------------------------	----

## Chapter 3: Menu Screens

Main Menu	21
-----------	----

Video Player Menu	22
-------------------	----

Photo Viewer Menu	26
-------------------	----

Music Player Menu	30
-------------------	----

Text Viewer Menu	33
------------------	----

## Chapter 4: Setup Menu

Settings	34
----------	----

Keystone Feature	39
------------------	----

## Chapter 5: Technical Details

Troubleshooting	41
-----------------	----

Specifications	43
----------------	----

Notes	44
-------	----

# P300 Neo at a Glance

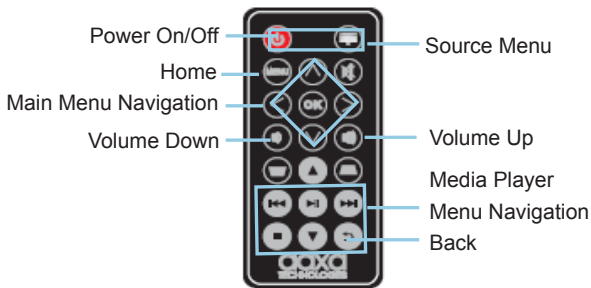
# Chapter 1

## Main Unit Front/Back

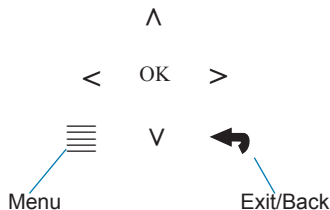


*Note: Boost Mode can only be used for 1 hour.*

# Remote & Touchpad



Remote



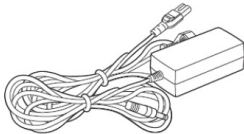
Both the touchpad and remote can be used to navigate through the menus. The Main Menu Navigation on the remote functions exactly the same as the directional pad on the P300 Neo unit.

*NOTE: Pressing power on the remote will only put the projector in STANDBY mode. Toggle the "ON/OFF" switch on the side of the projector to fully turn the projector off.*

# Accessories



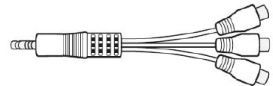
Remote



Power Adapter



VGA Cable  
(sold separately)



AV Cable



Tripod

*Note: VGA Adapter Cable sold separately*

*\*Under various circumstances, the actual accessories may be different from those shown in the pictures above.*

*Additional accessories are available for purchase at [www.aaxatech.com](http://www.aaxatech.com)*

## **Powering ON the projector**

1. Connect the power cord to the P300 Neo.
2. Connect the other end of the power cord into the wall power source.
3. Toggle the On / Off switch on the side of the projector to the "ON" position -- the projector should automatically turn on.

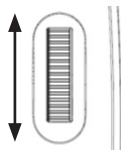
## **Powering OFF the projector**

1. To turn off the projector, toggle the "Power Switch" to the "OFF" position. This will fully turn off the projector.

# Focus Adjustment / Throw Distance

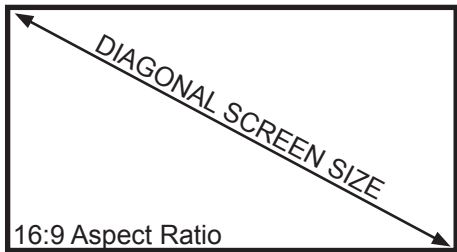
## Focus Adjustment

- Spin the focus wheel up or down until the image becomes clear.



## Throw Distance Chart

Throw Distance Units: Inches	Diagonal Size Units: Inches
19	20
29	30
38	40
48	50
57	60
67	70
76	80
86	90



Throw Ratio 1.2

Projection Angle: 100% Offset

\*minimum throw distance: 10 inches



# External Inputs and Outputs



# Connecting to a Computer via VGA

## Step 1:

Connect one end of the VGA Cable to your computer's VGA Adapter.



## Step 2:

Connect the other end of the VGA Cable to your P300 Neo's VGA port.

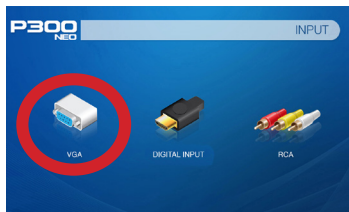


## Step 3:

In the Main Menu, select the "Inputs" icon and then the "VGA" icon.



Select "INPUT" icon



Select "VGA" icon

*Note: VGA Adapter Cable sold separately*

# Connecting to a Computer Cont.

## Step 4:

Enabling VGA on your Computer – To enable VGA output on your computer, most computers require “turning on” the video output feature. Each computer is different. Please consult your owner’s manual for instructions to enable VGA output. Below are standard instructions for a Windows 10 computer – not all systems are the same.

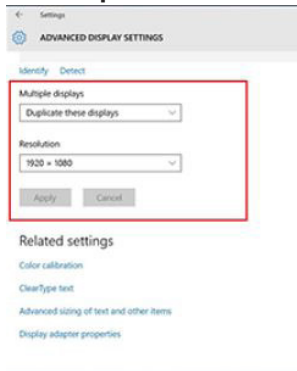
## Step 5:



Press Windows+P to toggle through display settings. Select either “Duplicate” or “Extend” depending on your viewing option

*\*NOTE: different operating systems may differ*

## Step 6:



1. Right click on computer desktop and select “Screen Resolution”
2. Display Properties window will pop up
3. If a secondary monitor is grayed out, click on it and select “Extend these displays” in the “Multiple Displays” drop down
4. If the image is blurry or the text is not legible, adjust the screen resolution. We recommend 1280x720

# Connecting to a Computer via Digital Input

## Step 1:

Connect one end of the Digital Input Cable to your computer's Digital Input Adapter.



## Step 2:

Connect the other end of the Digital Input Cable to your P300 Neo's Digital Input port.



## Step 3:

In the Main Menu, select the "Inputs" icon and then the "Digital Input" icon.



Select "INPUT" icon



Select "DIGITAL INPUT" icon

# Connecting to a Computer Cont.

## Step 4:

Enabling Digital Video output on your Computer – To enable Digital Video output on your computer most computers require “turning on” the video output feature. Each computer is different. Please consult your owner’s manual for instructions to enable Digital Video output. Below are standard instructions for a Windows 10 computer – not all systems are the same.

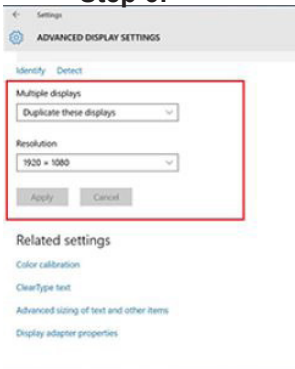
## Step 5:



Press Windows+P to toggle through display settings. Select either “Duplicate” or “Extend” depending on your viewing option

*\*NOTE: different operating systems may differ*

## Step 6:



1. Right click on computer desktop and select “Screen Resolution”
2. Display Properties window will pop up
3. If a secondary monitor is grayed out, click on it and select “Extend these displays” in the “Multiple Displays” drop down
4. If the image is blurry or the text is not legible, adjust the screen resolution. We recommend 1280x720

# Connecting to Composite Video

## Step 1:

Connect the 3.5mm Composite AV Cable to the back of the P300 Neo.



## Step 2:

Connect the composite end of the AV Cable (Red, White, Yellow) to your device.



# Connecting to Composite Video Cont.

## Step 3:

In the Main Menu



Select "INPUT" icon



Select "RCA"

## Step 4:

Turn on your multimedia device.

### Connectivity with multimedia devices

The P300 Neo can connect to many media devices including: iPod, iPhone, iPad, VHS players, DVD players, Blu-Ray players, smart phones, cameras, video game consoles and other peripherals with ease.

*\*Some smartphones require video out capabilities to be displayed with the P300 Neo. Check with your phone manufacturer.*

# Connecting to Digital Video Input

## Step 1:

Connect one end of the Digital Video Input cable to your P300 Neo's Digital Video Input Adapter.



## Step 2:

Connect the opposite end of the Digital Video Input cable to your device.



*Note: Apple devices require a specialized Digital Input adapter (Sold separately by Apple)*



# Connecting to Digital Video Input Cont.

## Step 3:

In the Main Menu



Select "INPUT" icon



Select "DIGITAL INPUT" Icon

## Step 4:

Turn on your multimedia device. If available, select 1280x720.

### Connectivity with multimedia devices

The P300 Neo can connect to many media devices including: iPod, iPhone, iPad, VHS players, DVD players, Blu-Ray players, smart phones, cameras, video game consoles and other peripherals with ease.

*\*Some smartphones require video out capabilities to be displayed with the P300 Neo. Check with your phone manufacturer.*

# Connecting Speakers / Headphones

**Step 1:** Connect your speakers/headphones to the projector's audio port.

**Step 2:** Ensure that the projector and/or the headphones are powered on.

**Step 3:** Place the headphones on and enjoy!



\*CAUTION: Prolonged use of headphones at a high volume may impair hearing.

# TF Card

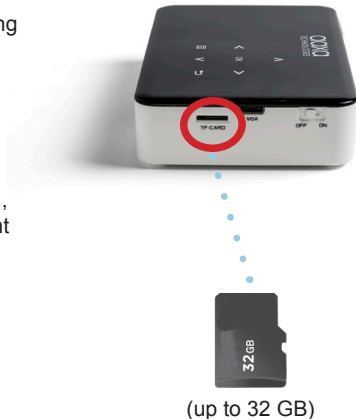
## How to insert your TF Card

- Slide in your TF card into the TF card slot on the side of the P300 Neo (facing down as shown in picture).
- Gently slide the TF card until it clicks into place.

## How to access your TF Card

- Once your TF Card has been inserted, you can navigate to any media content category in the main menu.
- After selecting the media content category, choose the TF card selection.
- You can now access the data on your TF card through the onboard media player

**\*Review the “Specifications” section of this manual to read about the supported file formats.**



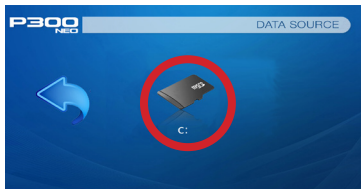
*Note: Microsoft Office and PDF file formats are not supported.  
To view a slideshow convert your slideshow into JPEG pictures first.*

# TF Card Cont.



## Media Player menu

- In the main menu select the type of file you wish to play.
- Select the TF Card icon to access your files.



## File Menu System

- The P300 Neo will show all folders and files you have on your TF Card in the C: drive.
- Use the touchpad to navigate to different folders or files.



**Return:** Brings you back to the main menu

# USB Drive

## How to insert your USB Drive

- Slide your USB Drive into the USB port (as shown in picture).
- Gently slide the drive until it cannot go in any further.

## How to access your USB Drive

- Insert your USB Drive into the projector.
- Use the navigation pad to choose the USB Drive icon from the main menu to access your files.
- Choose your desired file.

**\*Review the “Specifications” section of this manual to read about the supported file formats.**



(up to 32 GB)

*Note: Microsoft Office and PDF file formats are not supported.*

*To view a slideshow convert your slideshow into JPEG pictures first.*

# USB Drive Cont.



## Media Player menu

- In the main menu select the type of file you wish to play.
- Select the USB Drive icon to access your files.



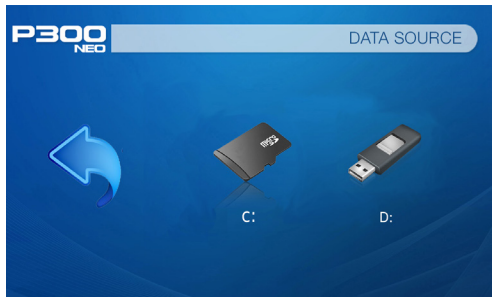
## File Menu System

- The P300 Neo will show all folders and files you have on your USB Drive in the C: drive
- Use the touchpad to navigate to different folders or files.



**Return:** Brings you back to the main menu

# TF Card and USB Drive



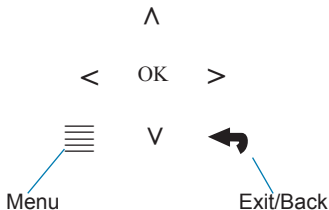
- If both TF Card and USB Drive are inserted, depending on which one inserted first, the first one will show in the C: drive and the second one will show in the D: drive.

# Menu Screens

# Chapter 3

## Main Menu

The P300 Neo features a built in PMP (Portable Media Player) function. This function allows the projector to play videos, pictures, music files, and text directly from your connected devices.



- Press the left and right directional buttons to choose an icon from the main menu.
- To select a menu option, press the “OK” button in the middle of the navigation pad.
- To go back to the previous screen, press the “Back” button.
- To Jump back to the submenu, press the “Menu” button once.
- To return to the main menu, press and hold the “Return” button.



# Video Player Menu

## Opening a file:

- Select the “Video” icon (Fig. 3.1).
- From the submenu (Fig. 3.2), select the storage media with the stored files.
- Choose which file you wish to play.

Fig. 3.1

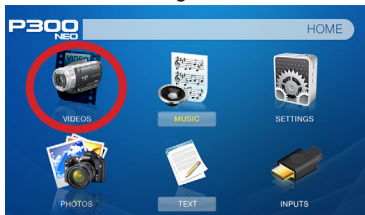
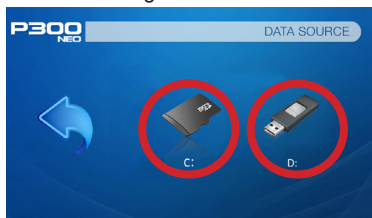


Fig. 3.2



The P300 Neo will show all folders and files you have on your USB and/or TF Card drive. (Fig. 3.2 assumes both USB and TF Card are inserted).

## Previewing Files:

- Press the directional keys to highlight the item of interest.
- Wait 2-3 seconds and a preview of the video will show on the screen.

# Video Player Menu

## While Playing Videos

While playing videos, the volume is adjustable. Further controls are available in the video player submenu - which is accessed through the “OK” button.

^  
< OK >  
v

◀ Volume Down	▲ Positive Keystone Adjustment
▶ Volume Up	▼ Negative Keystone Adjustment

## OK Enter Video Player Submenu

- To open/hide the video playback menu, use the “OK” and “Back” Buttons on the projector.

# Video Player Submenu

## Playing Videos

The Video Player Submenu can be accessed by pressing “OK” during video playback. To exit the Video Player Submenu, press the “Back” button or wait 5 seconds. To navigate the Playback Menu, use the directional buttons on the navigation pad or remote to highlight the option you wish to choose (Fig. 3.3).

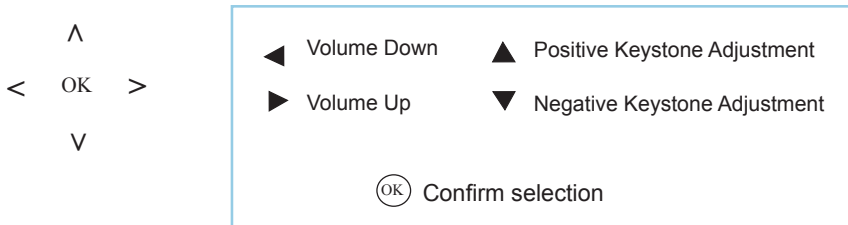
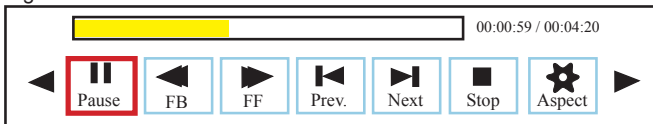


Fig. 3.3



# Video Playback FAQ

## How do I loop a video?

1. Choose either USB or TF Card for playback



2. Navigate the folders until you reach the file you wish to play.
3. Highlight the file you want to play, then confirm the selection.
4. Move selection on video player menu to "Repeat 1," and confirm the selection.
5. The video will now loop after playback is finished.

## How do I preview a video?

1. Choose the "Videos" icon from the main menu.
2. Navigate using either remote or onboard buttons to the file you wish to preview.
3. Highlight the file. \*Do not select the file, just highlight it.
4. Wait 3-4 seconds.
5. A preview screen will pop up on the lower right for the video.

# Photo Menu

## Opening a File:

- Select the “Photos” icon from the main menu (Fig. 3.4).
- From the submenu (Fig. 3.5), select the storage media with the stored files.
- Choose which file you wish to play.

Fig. 3.4

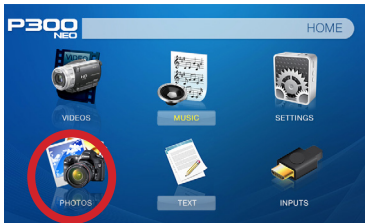
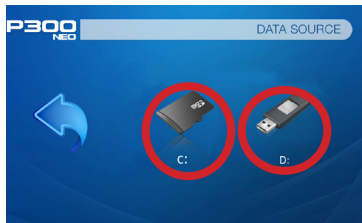


Fig. 3.5



The P300 Neo will show all folders and files you have on your USB and/or TF Card drive. (Fig. 3.5 assumes both USB and TF Card are inserted).

## Previewing Files:

- Press the directional keys to highlight the desired file.
- Wait 2-3 seconds and a preview of the picture will show on the screen.

# Photo Menu

## While Viewing Pictures

While viewing pictures, further controls are available in the Photo Submenu - which is accessed through the “OK” button.

^  
< OK >  
v

◀ Previous Picture	▲ Positive Keystone Adjustment
▶ Next Picture	▼ Negative Keystone Adjustment

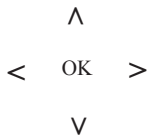
## Ⓞ Enter Photo Player Submenu

- To open/hide the Photo Playback menu, use the “OK” and “Back” Buttons on the projector.

# Photo Submenu

## Viewing Pictures:

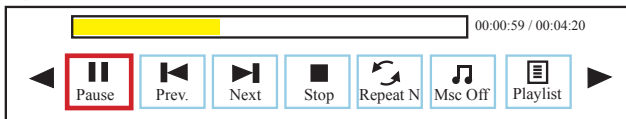
The Photo Submenu can be accessed by pressing “OK” during picture slide-show playback. To exit the Photo Submenu, press the “Back” button or wait 5 seconds. To navigate the playback menu, use the directional buttons on the navigation pad or remote to highlight the option you wish to choose (Fig 3.6).



- ◀ Previous Picture
- ▶ Next Picture
- ▲ Positive Keystone Adjustment
- ▼ Negative Keystone Adjustment

Ⓞ Confirm selection

Fig 3.6



# Photo Slideshow FAQ

## How do I play a slideshow?

1. Choose either USB or TF Card for playback



2. Navigate to the folder that contains the pictures you wish to view in the slideshow.
3. Confirm selection of the first picture.
4. Press "Play" in the photo menu
5. Slideshow will now play.
6. NOTE: Selecting "Repeat A" will loop slideshow.

## How do I manually control the slideshow?

1. After selecting the photo you wish to be displayed, you can press "Play" to start the slideshow (as outlined in the previous FAQ).
2. To manually control the slideshow, you must stop the slideshow with the "Stop" button.
3. You may use either the controls on your remote or on top of the projector itself to flip through the pictures in the current playlist.



# Music Player Menu

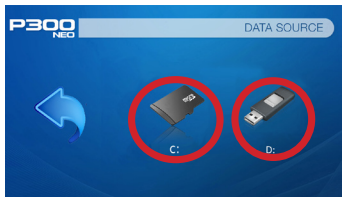
## Opening a File:

- Select the “Music” icon (Fig. 3.7).
- From the Submenu (Fig. 3.8), select the storage media with the stored files.
- Choose which file you wish to play.

Fig. 3.7



Fig. 3.8



The P300 Neo will show all folders and files you have on your USB and/or TF Card drive. (Fig. 3.5 assumes both USB and TF Card are inserted).

## Previewing Files:

- Press the directional keys to highlight the desired file.
- Wait 2-3 seconds and a preview of the audio will show on the screen.

# Music Player Menu

## Listening to Audio:

To adjust the volume, use the left and right button on the projector or the volume keys on the remote. To navigate the playback menu, push the “OK” button to open the menu and use the directional buttons on the navigation pad or remote to highlight the option you wish to choose (Fig 3.9).

- To open/hide the music playback menu, use the “OK” and “Back” button on the projector.

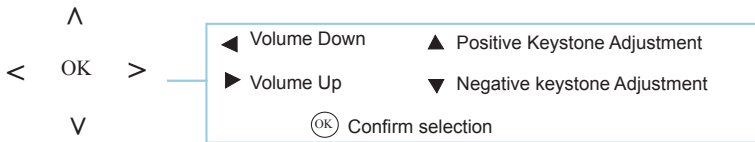
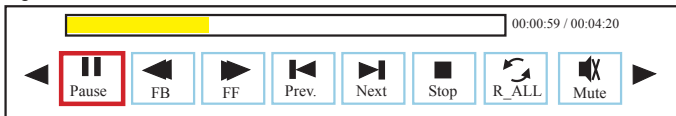


Fig. 3.9



# Music Playback FAQ

## How do I loop a song?

1. Choose either USB or TF Card for playback



2. Navigate the folders until you reach the file you wish to play.
3. Highlight the file you want to play, then confirm the selection.
4. Move selection on music player menu to "Repeat 1," and confirm the selection.
5. The song will now loop after playback is finished.

## How do I create a song playlist?

1. Insert your media device (either TF card or USB) into computer.
2. Make a new folder on media device (folder name will be the name of the playlist).
3. Transfer songs from computer to the new folder, name accordingly.
4. Remove media device from computer and insert into projector.
5. Navigate to Audio section, then choose appropriate media device.
6. Navigate to your playlist folder.
7. Start at first song.
8. Playback will follow each successive song on the list.

\*To create a special order for the list, add numerical numbering to the beginning of each file.

# E-Book Viewer Menu

## Opening a File:

- Select where the files are located from the main menu.
- Select the “Text” icon (Fig. 3.10)
- Choose the file you wish to play.



Fig. 3.10

The P300 Neo will show all folders and files you have on your USB or TF Card Drives.

## Viewing Text Files:

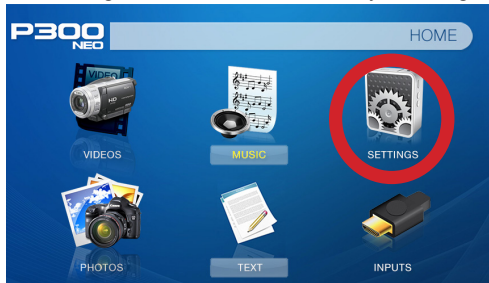
The P300 Neo Micro Projector allows you to view text files. Select the file you want to view in the file menu for the particular storage device on which the file is stored. You can press the up and down arrow buttons on the remote to flip through the pages you have in the present folder.

*Note: Microsoft Office and PDF file formats are not supported. To view a slideshow convert your slideshow into JPEG pictures first.*

# Setup Menu

# Chapter 4

The Settings Menu can be accessed by selecting "Setting" on the Main Menu



Within the settings menu, there are four more submenus that allow you to customize your P300 Neo to the settings you want.

## Picture

- Picture Mode
- Color Mode
- Aspect Ratio
- Brightness Mode
- Projection

## Sound

- Sound Mode
- Balance
- Auto Volume

## Time

- Sleep Timer
- Auto Sleep

## Option

- OSD Language
- Restore Factory Default

# Picture Settings

## Picture Mode

- Changes the picture mode to different settings depending on your usage

## Color Mode

- Adjusts the color temperature from warm to cool (red to blue)

## Aspect Ratio

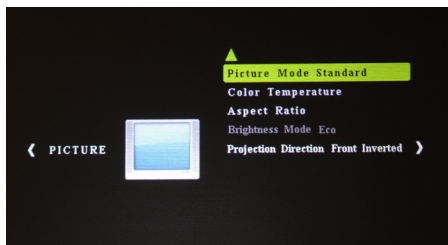
- Changes the aspect ratio of the picture - Auto, 4:3, 16:9\*, etc.

## Brightness Mode

- Choose between Eco, Standard, and Boost\*\*

## Projection

- Flips the projected image

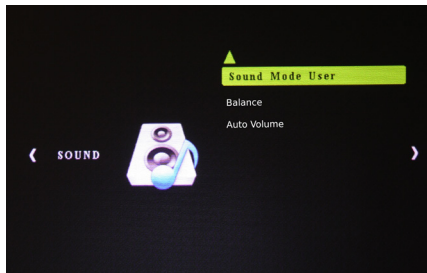


\*Caution: Some pictures may be cut off when aspect ratio is set incorrectly

\*\*Boost mode should only be used in low temperature environments with adequate clearance of exhaust / intake vents. A tripod is highly recommended. **DO NOT block vents while operating in Boost mode.**

*Note: Boost Mode can only be used for 1 hour.*

# Sound Settings



## Sound Mode

- Changes the sound mode depending on what is currently playing

## Balance

- Adjusts the sound balance manually

## Auto Volume

- With the Auto Volume On, the video can be opened with volume automatically

# Time Settings



## Sleep Timer

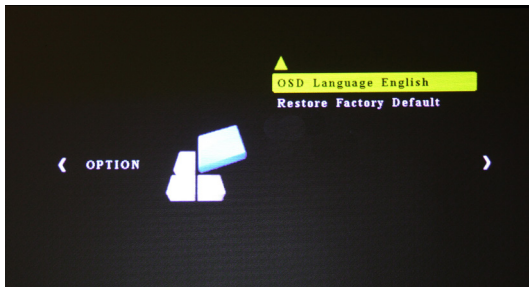
- Sets when projector goes to sleep

## Auto Sleep

- Sets auto sleep function where projector will turn off when not in use or if there is no signal.



# Option Settings



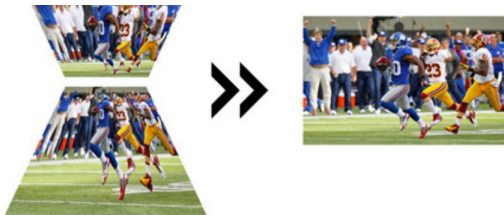
## OSD Language

- Changes the language of the device. Options include English, Spanish, Chinese, German, French, Korean, Japanese

## Restore Factory Default

- Restores the projector to factory settings

# Keystone Adjustments



## What is Keystoneing?

“Keystoneing” occurs when a projector is aligned non-perpendicularly to a screen, or when the projection screen has an angled surface. The image that results from one of these misalignments will look trapezoidal rather than square.

## Digital Keystone Adjustments

By adding a special, selectable algorithm to the scaling, some new projectors are able to alter the image before it reaches the projection lens. The result is a squared image, even at an angle.

# Keystone Adjustments FAQ

## How to Correct Keystone

- If the image looks trapezoidal with the base larger (as pictured right), press the bottom button on the directional pad on the top of the P300 Neo until the keystone effect corrects and the picture turns into a square projection.



- If the image looks trapezoidal with the top larger (as pictured right), press the top button on the directional pad on the top of the P300 Neo until the keystone effect corrects and the picture turns into a square projection.



## Troubleshooting

### IMAGE IS BLURRED

Possible Causes	Solution
The Projector is not in focus	Adjust the focus with the focus adjustment dial until the image comes into focus
The Projector is offset from plane / angle of operation	Move the projector so that it is both 180 degrees and on an even plane with the screen. Or it can be adjusted by keystone settings

### NO SYNC, NO SIGNAL

1. Be sure to setup the computer to enable a video signal output. On some laptops this is done by pressing and holding Function F5 key. If using the P300 Neo as an external monitor on Windows based systems, this can be done by selecting "extend my desktop to this monitor". The native resolution of the P300 Neo projector is 1280x720. Depending on the video driver different resolutions may need to be selected for proper output.

# Technical Details

## Troubleshooting

### THE PROJECTOR DOES NOT TURN ON

Possible Causes	Solution
There is no power	Check to ensure the power outlet source is good. Check the power adapter to ensure a proper connection with the wall outlet as well as the projector. Confirm that the unit is charged and has enough power
Projector is under STNADBY mode	To power on the projector, press the power button on the remote

### NO PICTURE / FILE NOT SUPPORTED

Possible Causes	Solution
The video source is not properly connected or selected	Check the video source signal to ensure that it is properly connected. Select the current input source by choosing the input desired from the main menu
Incorrect file extension / Video is encoded with incorrect codec	Please refer to “Specifications” page to see which file types and codex are supported. Verify that the file was encoded properly.

# Specifications

<b>Brightness:</b>	<b>420 Lumens</b>
<b>Native Resolution:</b>	<b>1280x720 (720p)</b>
<b>Max Resolution:</b>	<b>1920x1080 (1080P)</b>
<b>Battery Runtime:</b>	<b>150 Minutes (Eco Mode)</b>
<b>Contrast Ratio:</b>	<b>1000:1</b>
<b>Aspect Ratio:</b>	<b>16:9</b>
<b>Projection Lens:</b>	<b>Manual Focus</b>
<b>Image Size:</b>	<b>10~120 inches</b>
<b>Lamp:</b>	<b>Triple RGB LEDs with Vibrant Color Technology Life 30,000hrs</b>
<b>Video in:</b>	<b>Composite A/V Mini-VGA Digital Input (Compatible with Full Size HDMI™)</b>
<b>Audio Output:</b>	<b>3.5 mm audio jack</b>
<b>TF Card:</b>	<b>TF Card Slot (32GB maximum)</b>
<b>USB:</b>	<b>5 Pin USB 2.0 (Full Size) (32GB maximum)</b>
<b>Dimensions:</b>	<b>5.9" x 3.5" x 1.2"</b>
<b>Weight:</b>	<b>0.84 lbs</b>
<b>Supported File Formats:</b>	<b>MP3, WMA, OGG, WAV, JPG AVI, BMP, GIF</b>



# Notes

---

---

---

---

---

---

---

---

---

---

---

Please direct all customer service inquiries to:

AAXA Technologies, Inc.  
17691 Mitchell N., Unit #B  
Irvine, CA 92614  
(714) 957-1999  
[info@aaxatech.com](mailto:info@aaxatech.com)