



# Transportation Update

**Craig Thompson**

Secretary, Wisconsin Department of Transportation

Southeast Wisconsin Transportation Symposium

October 8, 2021

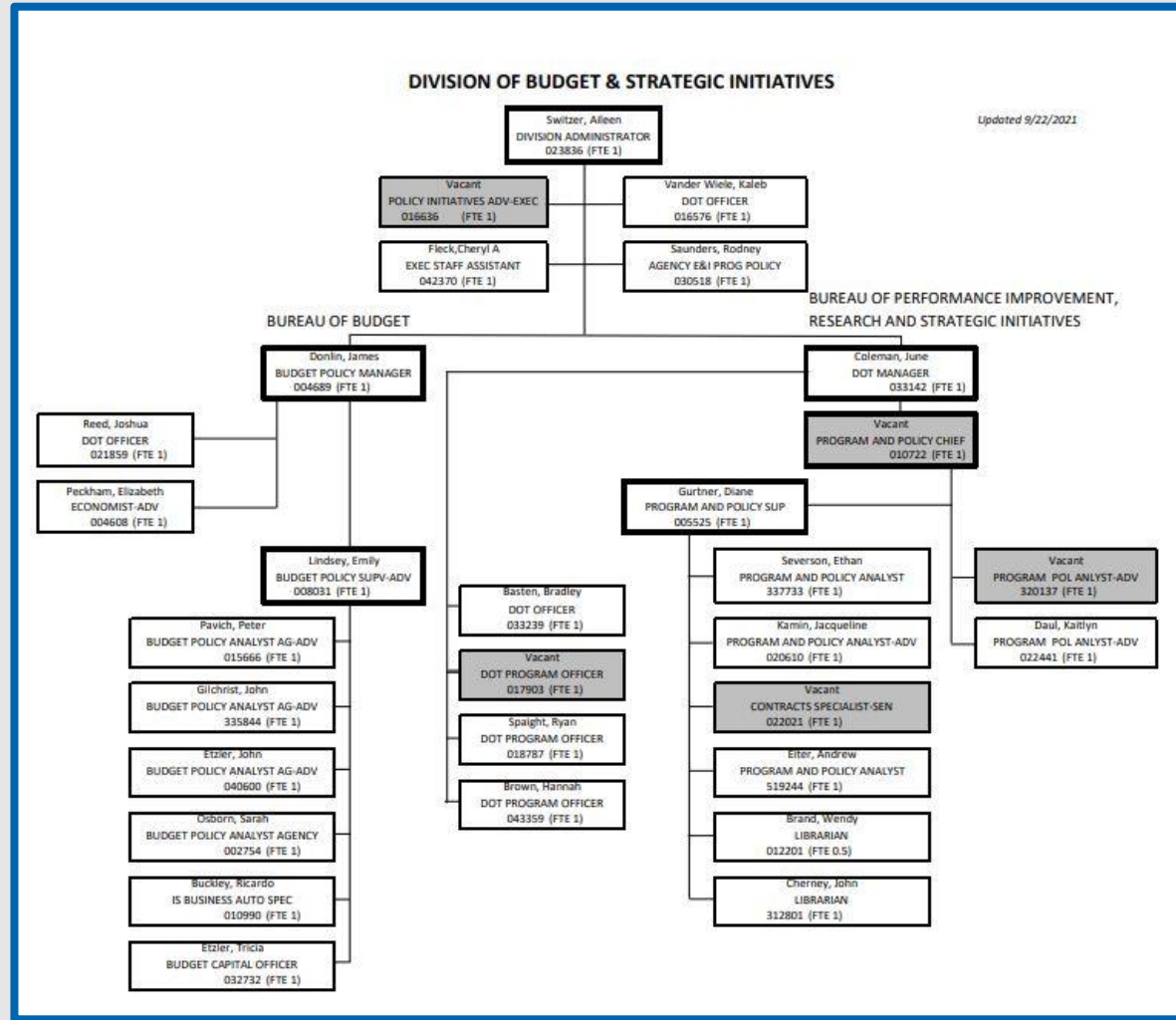


# Institute for Physical Infrastructure and Transportation

- Evaluating programs
- Improving data collection
- Workforce development
- Testing materials



# Division of Budget and Strategic Initiatives



# Stakeholder Advisory Groups

- Wisconsin Transportation Stakeholders Task Force
- Wisconsin Automated Vehicle External Advisory Committee
- Wisconsin Non-driver Advisory Committee



# Mission: Stop the decline

- Years of underinvestment
- ASCE WI scorecard: D+



# Delays before 2019

- Stopped work/rescinded ROD on I-94 East-West
- Stopped work on STH-15 (enumerated for construction)
- I-43 not enumerated until SFY-2020
- Cancelled I-39/90 Major Highway Study (Madison – WI Dells)
- Slowed work on other Major Highway Study projects
  - US 51 – Stoughton to McFarland
  - US 51 – Beltline to STH 19



# Progress after 2019

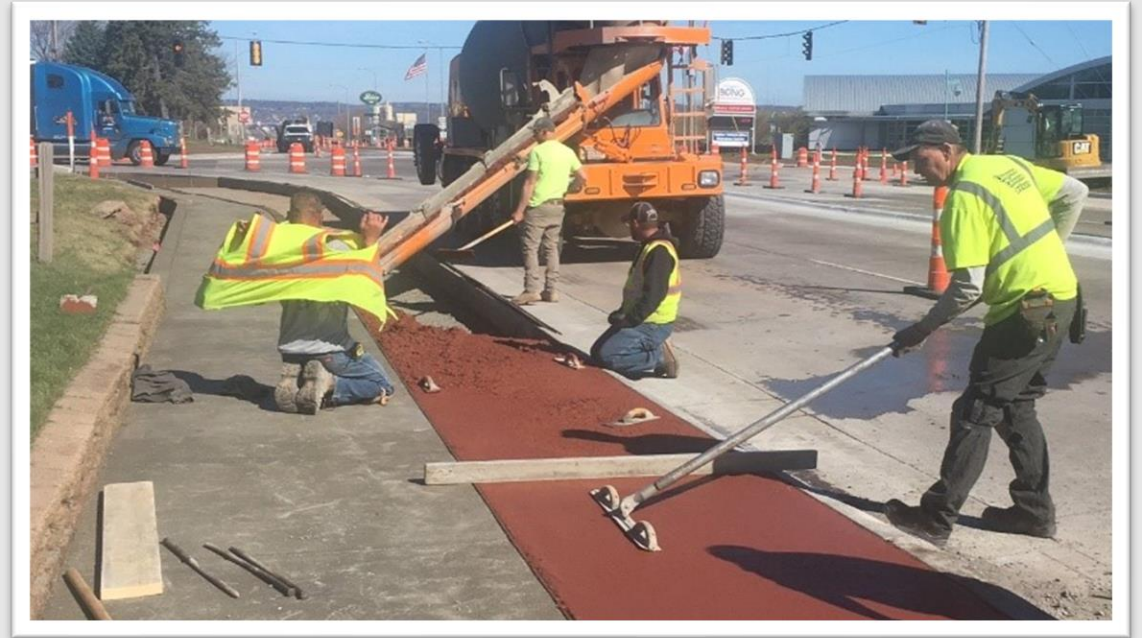
- Enumerated I-43 and I-41
- ~ \$500 million planned for FY-22 and FY-23 (I-43)
- Restarted work to finish design and ready STH-15 construction
  - Successfully advanced letting start by 1-year; project is now under construction
  - Mainline open to traffic expected in November 2024
- Restarted work in earnest on other Major Highway Study projects
  - US 51 – Stoughton to McFarland
  - US 51 – Beltline to STH 19
- I-39/90/94 WI River Bridges - Obtained TPC Approval to Construct (\$146 million estimate)
- US-51 Stoughton to McFarland – Obtained TPC Approval to Construct (\$203 million estimate)
- I-39/90 Madison to Wisconsin Dells - Restarted Major Highway Environmental Study Project
- I-94 East-West –Work Started to Reinstate the ROD



# 2020 Highlights

## Staying On Track

- Completed 375 construction projects statewide, most of which are new
- Innovative programs allowed WisDOT to finish many projects under budget and ahead of schedule





# 2021-2023 Budget

## Continuing our Commitment to Fix What We Have

- Increases for local roads
  - \$72 million increase for SHR
  - GTA up two percent in both 2022 and 2023
  - \$100 M in LRIP Discretionary Funds



# I-94 East West Corridor

- Project enumerated
- Supplemental EIS started
- Focus on community engagement



# Wisconsin Ports

- Ports are vital
  - Over 40 million tons of cargo valued at over \$8 billion
  - Port of Milwaukee largest exporter of grain on the Great Lakes
- Harbor Assistance Grant Program



# Continuous Improvement

- New materials and techniques
- Flexible scheduling
- Low Risk Program
- Madison Flex Lane
- Connected vehicle pilots





**Thank You!**

