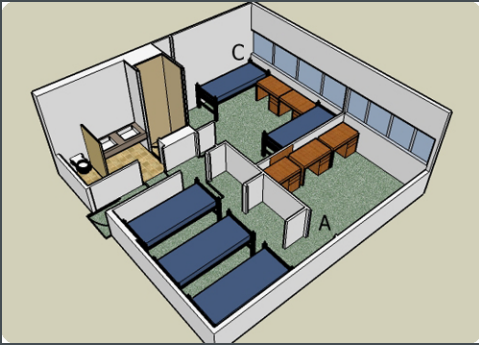


Traditional 3-2



Dimensions

Room A (Triple Room 1)	14' x 9' 10"
Room A (Triple Room 2)	14'2" x 9'6"
Room C (Double)	13'7" x 11'8"

North Tower View

Room A1 faces North
Rooms A2 and C face West

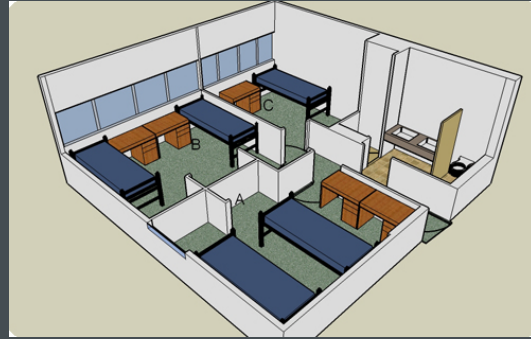
South Tower View

Room A1 faces South
Rooms A2 and C face East

West Tower View

Room A1 faces West
Rooms A2 and C face South

Traditional 2-2-1



Dimensions

Room A (Double)	14'2" x 9'10"
Room B (Double)	14'2" x 9'6"
Room C (Single)	9'5" x 9'11"

North Tower View

All rooms face West

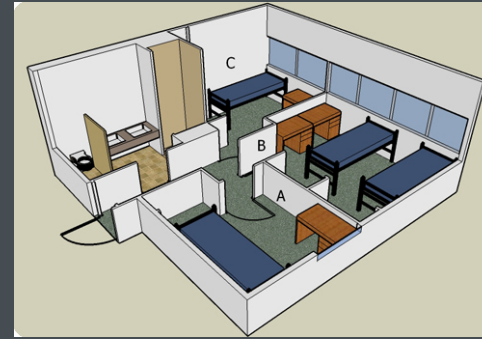
South Tower View

All rooms face East

West Tower View

All rooms face South

Traditional 1-1-2



Dimensions

Room A (Single)	9'1" x 9'3"
Room B (Double)	14'2" x 9'6"
Room C (Single)	8' x 9'6"

North Tower View

Room A faces East
Rooms B and C face South

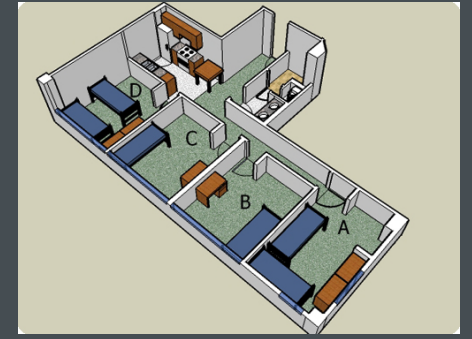
South Tower View

Room A faces West
Rooms B and C face North

West Tower View

Room A faces North
Rooms B and C face East

East Tower Suite Floor Plan



Dimensions

Room A (Double)	11'4" x 13'11"
Room B (Single)	11'4" x 13'11"
Room C (Single)	11'4" x 13'11"
Room D (Double)	10'1" x 16'8"

Views

Rooms in East 10, 60 suites face West
Rooms in East 20 suites face North
Rooms in East 30, 40 suites face East
Rooms in East 50 suites face South

**All rooms have
8' ceilings.**

East facing rooms have a view of Milwaukee's Eastside neighborhood and Lake Michigan (on higher floors). **West facing rooms** have a view of Milwaukee's Eastside neighborhood. **South facing** rooms have a view of campus and Downtown Milwaukee (on higher floors). **North facing rooms** have a view of Downer Woods and the Village of Shorewood.

All rooms facing the Sandburg Commons on the 4th floor and higher have a view of the Sandburg green roof.