

UNIVERSITY OF WISCONSIN – MILWAUKEE
COLLEGE OF HEALTH SCIENCES 2018-2019

ADMINISTRATION & DEAN'S OFFICE

Ray Fleming, Interim Dean
Karen Miyoshi – Admin. Program Manager II
Beverly Gehring – University Services Associate 2

RESEARCH STRATEGY

Abigail Amissah-Arthur - Director

BUSINESS ADMINISTRATION, FINANCE & IT

Jennifer Powell – HR Business Partner
Deb Maglio, Assistant Dean, UBR
Dario Elia – IS Comp. Services Professional Senior
Albin Rosario Espinosa – IS Computer Support Tech 1

EXTERNAL REALATIONS AND COMMUNICATIONS

Cheri Dziekan Chapman – Admin. Program Mgr. III
Renea Drews – Information Processing Consultant
Sabine Schwark – Sr. Editor

OFFICE OF ACADEMIC AND STUDENT AFFAIRS

Jeri-Anne Lyons – Associate Dean

Office of Academic Initiatives & Planning
Susan Stalewski – Director of Academic Initiatives & Planning

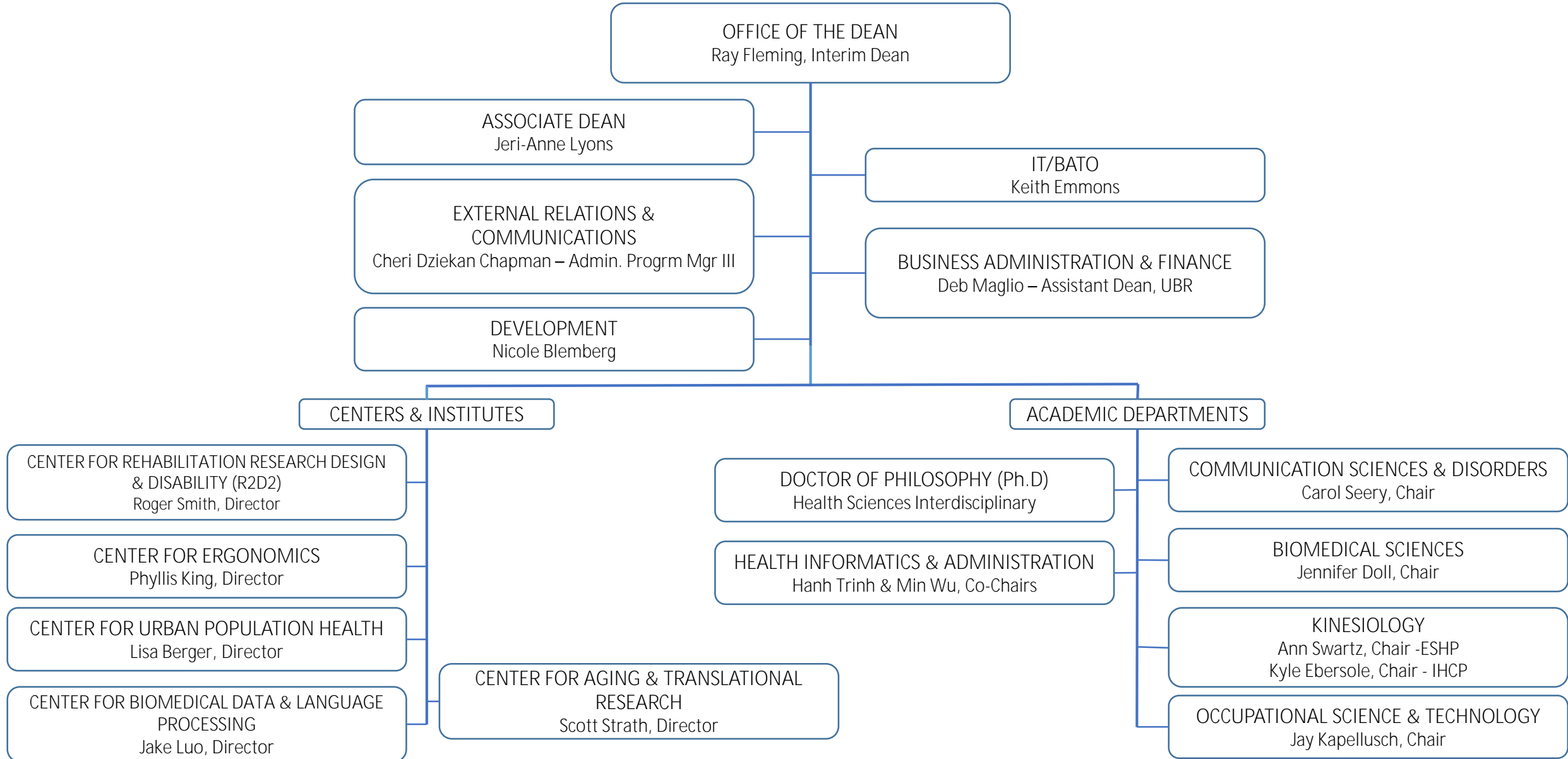
Office of Performance Analytics
Susan Cashin – Director of Performance Analytics

Office of Student Affairs
Kate Brondino – Director of Student Affairs
Michelle Janowiak – Sr. Student Services Coord.
Angela Kowalski – Advisor
Bill Mueller – Advisor
Aggie Northrup – Advisor
Torry Rufer - Advisor

CONTINUING EDUCATION & OUTREACH

Ron Wiza II – Director
Amanda Battaglia – Communications Specialist
Joan Mayr – University Services Associate 2

UNIVERSITY OF WISCONSIN – MILWAUKEE
COLLEGE OF HEALTH SCIENCES 2018-2019



UNIVERSITY OF WISCONSIN – MILWAUKEE

COLLEGE OF HEALTH SCIENCES 2018-2019

ACADEMIC DEPARTMENTS

BIOMEDICAL SCIENCES

Pam Akers – Academic Department Specialist
 Shahla Anders – Clinical Assoc. Professor
 Anthony Azenabor – Professor
 Cynthia Brown – Clinical Assoc. Professor
 Daniel Cordas – Clinical Instructor
 Bradley DePons – Clinical Instructor
 Jennifer Doll – Associate Professor (Chair)
 Janis Eells – Professor
 Margaret Hirschfeld – Clinical Asst. Professor
 Fang Yao Stephen Hou – Clinical Asst. Professor
 Melissa Klug – Clinical Instructor
 Elizabeth Liedhegner – Faculty Associate
 Jeri-Anne Lyons – Professor
 Dean Nardelli – Associate Professor
 Melissa Riter – Research Associate
 Troy Skwor – Assistant Professor
 Susan Stalewski – Clinical Assoc. Professor
 Lora Taylor de Oliveira – Out. Prg Mrg II
 Jayne Wisniewski – Clinical Asst. Professor

COMMUNICATION SCIENCES & DISORDERS

Patricia B Chirillo – Clinical Assoc. Professor
 Kate Fernstrom – Academic Dept. Associate
 John Heilmann – Associate Professor
 Dawn Marie Hennes – Clinical Assoc. Professor
 Sabine Heuer – Assistant Professor
 Joyce King-Mclver – Clinical Assoc. Professor
 Erin LeSage – Clinical Assistant Professor
 Shelley Lund – Associate Professor
 Bethanne Mazurczak – Clinical Asst. Professor
 Barbara Pauloski – Associate Professor
 Stacy Ryan – Sr. Clinical Audiologist
 Carol Seery – Associate Professor (Chair)
 Jing Yang – Assistant Professor

HEALTH INFORMATICS & ADMINISTRATION

Thomas Best – Assistant Professor
 Jennifer Fink – Assistant Professor
 Jake Luo – Assistant Professor
 Priya Nambisan – Associate Professor
 Kathleen Olewinski – Clinical Asst. Professor
 Hanh Trinh – Associate Professor (Co-chair)
 Min Wu – Associate Professor (Co-chair)
 Barbara Zabawa – Clinical Asst. Professor
 Felicia Zajicek – Academic Dept. Associate

KINESIOLOGY

Exercise Science & Health Promotion
 Susan Cashin – Clinical Professor
 Stephen Cobb – Associate Professor
 Christy Greenleaf – Professor
 Kevin Keenan – Associate Professor
 Lori Klos – Associate Professor
 Susan Kundrat – Clinical Assoc. Professor
Kris O'Connor – Professor
 Michelle Rimer – Clinical Asst. Professor
 Laura Rooney – Clinical Assoc. Professor
 Scott Strath – Professor
 Ann Swartz – Professor (Chair)
 Jinsung Wang – Associate Professor

Integrative Health Care & Performance
 Carlynn Alt – Clinical Assoc. Professor
 Monna Arvinen-Barrow – Associate Professor
 Ann Dietrich – Clinical Assoc. Professor
 Jennifer Earl-Boehm – Associate Professor
 Kyle Ebersole – Associate Professor (Chair)
 Hayley Erickson – Clinical Asst. Professor
 Yeellianna Hamilton – USPA
 Wendy Huddleston – Associate Professor
 Renee Mazurek – Clinical Asst. Professor
 Barbara Meyer – Professor
 Victoria Moerchen – Associate Professor
 Renee Reckelberg – Clinical Asst. Professor
 Carrie Truebenbach – Clinical Asst. Professor
 Lori Woodburn – USPA

OCCUPATIONAL SCIENCES & TECHNOLOGY

Justin Almquist – USPA
 Kris Barnekow – Associate Professor
 Joyce Engel – Professor
 Tamicah Gelting – Clinical Asst. Professor
 Jay Kapellusch – Associate Professor (Chair)
 Phyllis King – Professor
 Randal Kohl – Clinical Instructor
 Nancy Nelson – Clinical Assoc. Professor
 Heidi Plach – Clinical Assoc. Professor
 Alyssa Schnorenberg – Researcher
 Bhagwant Sindhu – Associate Professor
 Michelle Silverman- Clinical Asst. Professor
 Roger Smith – Professor
 Virginia Stoffel – Associate Professor
 Julie Thomas – University Relations Specialist
 Patricia Thomas – Clinical Assoc. Professor
 Ying-Chih Wang – Associate Professor
 Cynthia Warneke – Academic Dept. Associate
 Dana Washburn – Clinical Asst. Professor

Centers

Center for Aging & Translational Research
 Scott Strath – Professor (Director)
 Chris Cho – Associate Researcher

Center for Urban Population Health
 Lisa Berger – Academic Program Director
 Kaija Zusevics – Associate Researcher

R2D2 Center
 Roger Smith – Professor (Director)
 Nathan Spaeth – Instrumentation Tech.
 Dennis Tomashek – Associate Researcher