

This Issue

Lubar Student Lounge & Study Rooms

RACM Housing & Parking Location Concepts

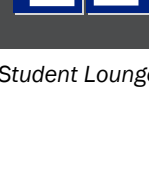
El Puente School

Glen Hills School Visit

UWM Chemistry Building Groundbreaking



Community Design Solutions



On The Boards

Above: Lubar Student Lounge

What are we up to?

Welcome to our "On the Boards" newsletter featuring a quick overview of CDS projects, events, and how we are working with local residents, leaders, and neighborhoods.

What is CDS?

Community Design Solutions (CDS) is a funded design center in SARUP that assists communities, agencies, civic groups, and campuses throughout Wisconsin. CDS provides preliminary design and planning services to under served communities and agencies. Students from SARUP work with Director Carolyn Esswein, clients, and faculty to develop concepts that promote positive change, stimulate funding opportunities, and serve as a catalyst for continued investment.

Director: Carolyn Esswein
cesswein@uwm.edu
414.977.7744
www.uwm.edu/cds

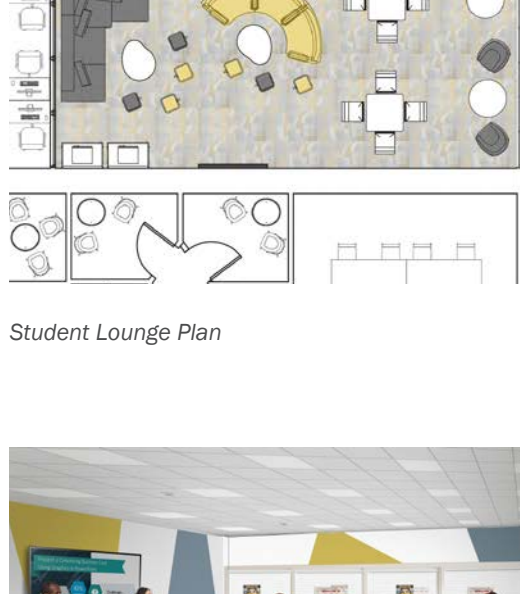
Advisor: Karl Wallick

Lubar Student Lounge & Study Rooms

Client: UWM Lubar School of Business

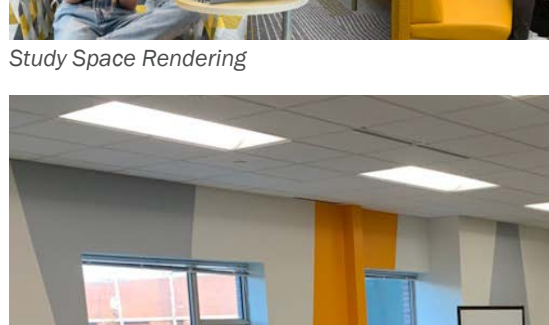
After previously working with the Lubar School of Business, this collaboration focuses on creating a new student lounge and updating existing study rooms on the second floor. Redevelopment efforts emphasize providing enhanced student amenities.

The Lubar School of Business desires a flexible student lounge space where students can congregate and relax between classes, gather for group projects, or attend small presentations. Currently a computer lab, CDS proposes movable glass walls to create an inviting space while allowing the room to be closed during events. Two existing study rooms are redesigned with colorful furniture and wall decor, one with individual study stations, the other for group work.

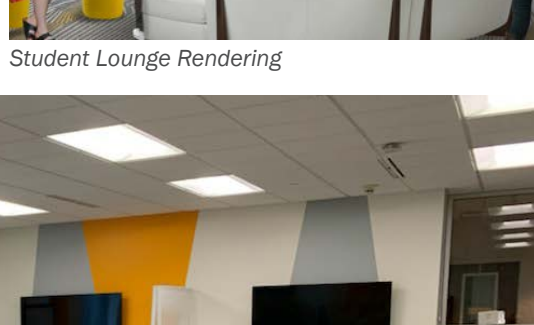


Student Lounge Plan

CDS Staff: Elise Osweiler, Alex Vite Lopez



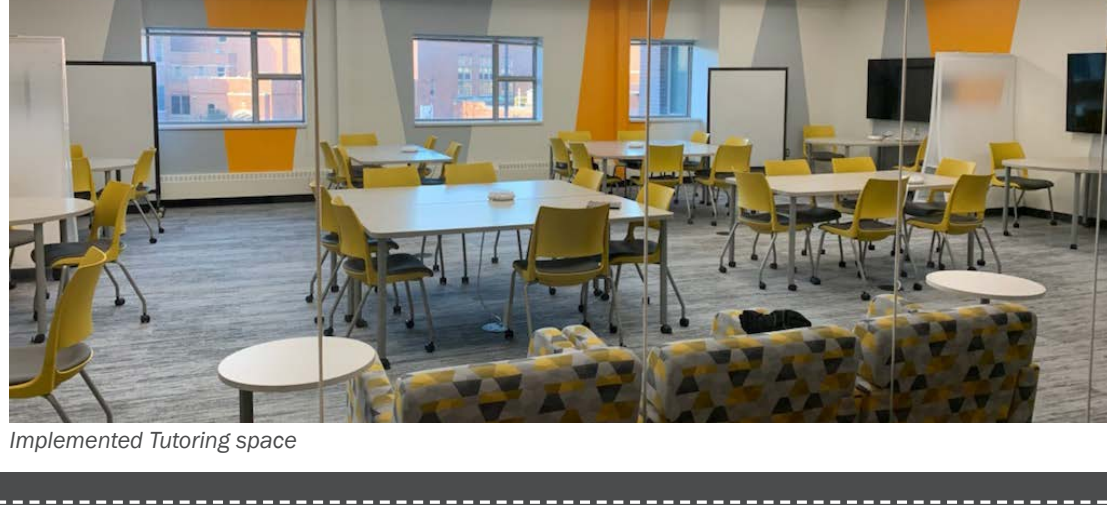
Study Space Rendering



Student Lounge Rendering



Implemented Tutoring space



Implemented Tutoring space



FAICP Congratulations!

Community Design Solutions Director, Carolyn Esswein, has achieved the planning profession's highest honor of being named to the prestigious American Institute of Certified Planners (AICP) College of Fellows.

This recognizing her outstanding achievements in urban planning and advancement of the profession.

Esswein was one of 53 inductees in this year's College of Fellows and only the fourth Fellow selected from Wisconsin since the College was inaugurated in 1999.

Parking & Housing Location Concepts

Clients: Redevelopment Authority of the City of Milwaukee (RACM) & Milwaukee County

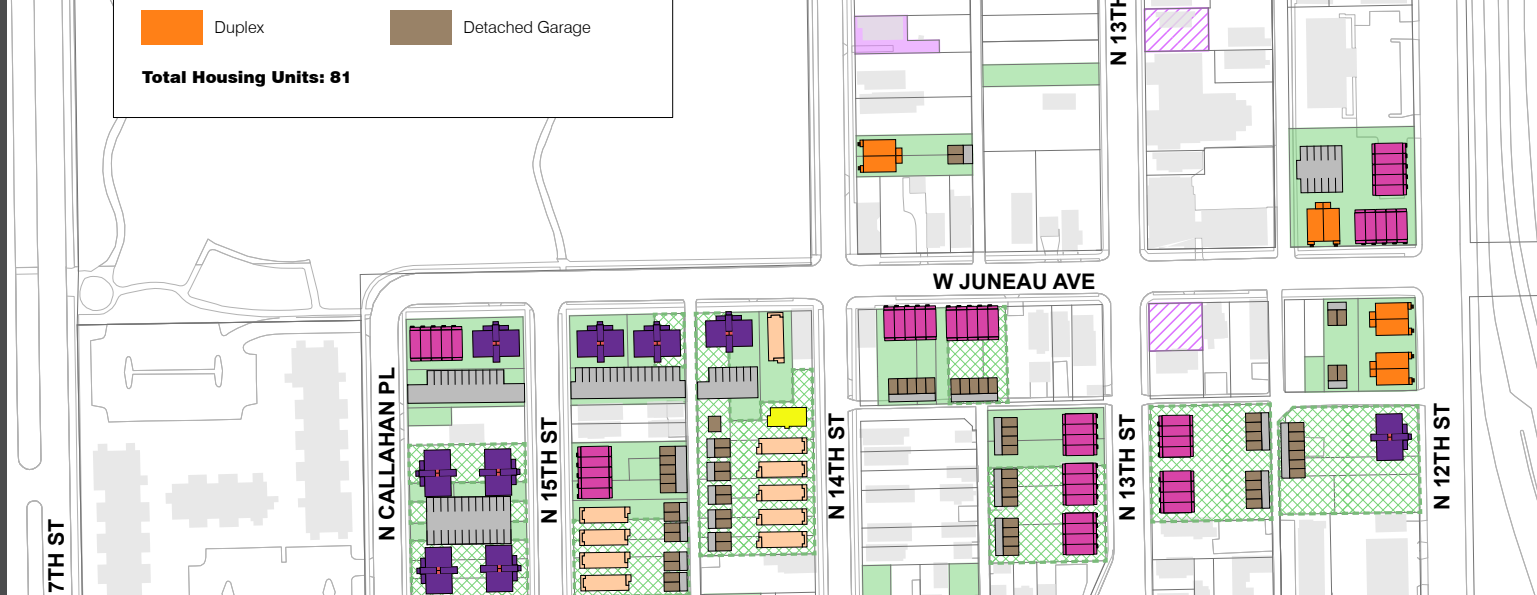


Vacant lots considered for parking and housing

The Redevelopment Authority of the City of Milwaukee (RACM) and Milwaukee County are exploring how to integrate new affordable housing units on City-owned parcels near the County Health and Human Services facility, as well as replacing approximately 100 parking spots due to the construction of the new Mental Health Emergency Center. CDS presented several parking replacement options. Three lots to the south of West Villet Street were selected due to their proximity and compact layout. CDS developed conceptual designs utilizing the City of Milwaukee landscaping requirements.

As part of the affordable housing options, CDS selected several precedent unit layouts, from single family homes to an eight-unit apartment building. Three initial housing plan options were prepared, ranging from all single-family to medium density multifamily. Two final housing plans were developed based on client feedback. Option A considered only vacant lots already owned by the City, and includes single family homes, duplexes, and townhomes. Option B (shown below) considered additional privately-owned vacant lots adjacent to City-owned parcels.

CDS Staff: Kelly Iacobazzi, Roe Draus



Potential housing locations near King Park

El Puente High School Schoolyard Re-Development

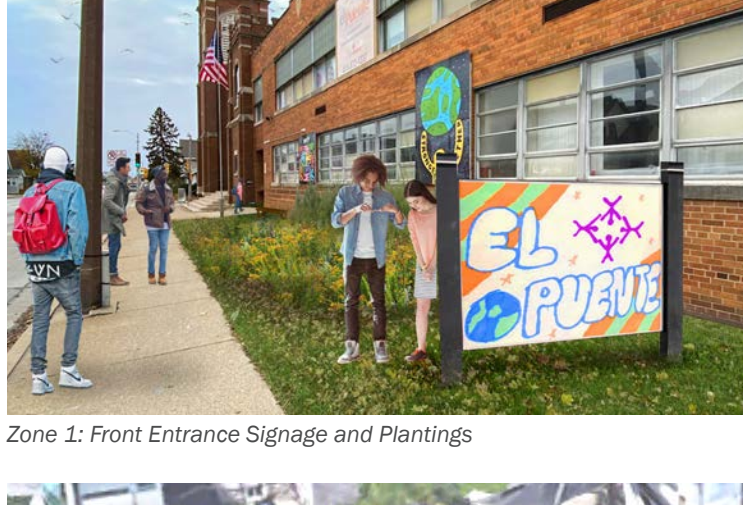
Client: Reflo and El Puente School

The past year is a continuation of the partnership with Reflo to convert paved schoolyards into outdoor classrooms, play areas, and green infrastructure. The El Puente High School project consisted of three zones: the front entrance along 35th Street, south frontage, and a nearby vacant lot. In addition to the stormwater management strategies, the project focused on the implementation of artwork, murals, and garden beds to enhance the learning environment.

CDS Staff: Elise Osweiler, Burke Adams



CDS assisted with student charrettes



Zone 1: Front Entrance Signage and Plantings



Zone 2: Side Lot Landscaping, Seating, and Rain Barrels



Zone 3: Vacant Lot Envisioned as an Outdoor Classroom, Raised Bed Gardens, Stormwater Collection, and Gathering Areas

Graduating CDS Project Assistants

Congratulations to Elise Osweiler for graduating with a Master of Architecture in May 2022. Elise will be a Project Coordinator at Bray Architects.



Congratulations to Kelly Iacobazzi for graduating with her Master of Architecture in May 2022. Kelly will be starting a health care position at HGA in Milwaukee.



Glen Hills Middle School Visit

"Designing with Water"

On March 30th, CDS hosted 8th graders from Glen Hills Middle School to learn about green infrastructure and designing with water. The students learned about CDS green schoolyard projects, John Gardner of UWM's Sustainability Office lead a campus green infrastructure tour, and the students engaged in a design exercise along with CDS staff.



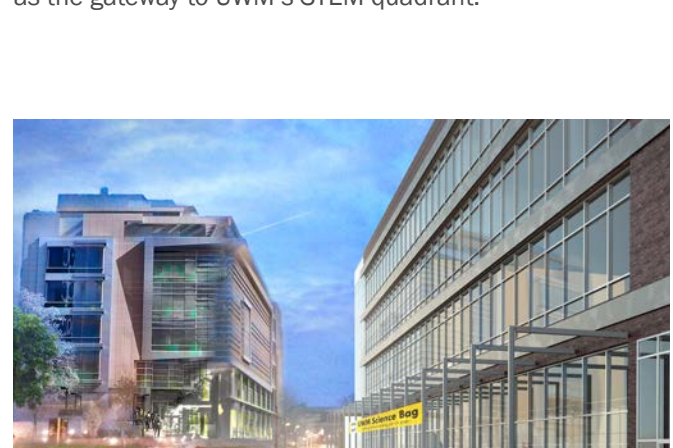
Chemistry Building Groundbreaking

A January groundbreaking ceremony signaled the start of UWM's new chemistry building along Kenwood Avenue. A 2017 CDS building programming and design study for the chemistry facility assisted the faculty in gaining UWM and Regent approval for the building. The current plans and design were developed by Kahler Slater and CannonDesign.

The new four-story, 163,400 square foot, building will serve as the gateway to UWM's STEM quadrant.



Future site of UWM's new Chemistry Building



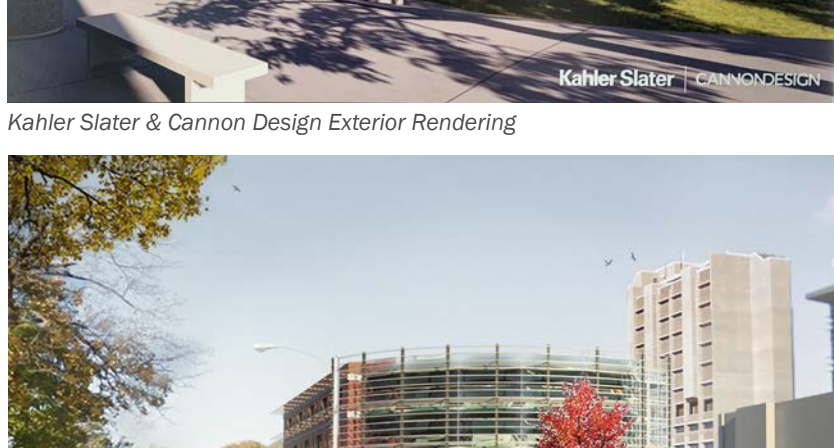
CDS Original Rendering: North Facade and Campus Connection



Kahler Slater & Cannon Design Exterior Rendering



CDS Original Rendering: Proposed Auditorium Flex Space



CDS Original Rendering: Kenwood Blvd. Exterior View