



WELCOME TO YOUR *University*

22,592
students

18,171
undergraduate

4,421
graduate

5%
international
students

The University of Wisconsin-Milwaukee is committed to global engagement through its curriculum, research activities and student and faculty mobility. Located in the United States, it also boasts partnerships with universities and corporations around the world.

Established in 1956, UWM is a large, public research university in the city of Milwaukee in the state of Wisconsin. UWM offers 206 programs at the bachelor's, master's and doctoral level in a variety of disciplinary, interdisciplinary and professional fields.

Award-winning research is a key feature of UWM, making admissions competitive. Our professors are committed to quality graduate and undergraduate education in an array of research-intensive, career-building programs. Students learn from the top scholars in their fields — and even contribute to their research — through the UWM Office of Undergraduate Research and more than 100 graduate programs.

POINTS OF **Pride**

- UWM's College of Engineering & Applied Science connects students with internship and job opportunities in the city. In fact, **nearly 90% of engineering and computer science students at UWM land a job before graduation day.**
- UWM's Lubar School of Business is **among only 5% of business schools worldwide accredited by AACSB International.**
- **UWM is recognized as a top research university** in the U.S. by the Carnegie Classification of Institutions of Higher Education, one of only 146 institutions in the U.S. to receive this recognition.
- UWM has **Wisconsin's only accredited architecture school**, and it's one of only 28 universities in the U.S. to offer a doctoral degree in architecture.
- UWM has the **only accredited school of public health** in Wisconsin.
- In 2021, Variety magazine ranked UWM's film program among the **top 50 film programs in the world.**
- UWM has the **largest nursing college**, the **largest social work program** and one of the **largest education colleges** in the state of Wisconsin.
- UWM's School of Freshwater Sciences is the **only school of higher education in the U.S. dedicated solely to freshwater sciences.**



A Best Midwestern University

— PRINCETON REVIEW IN 2022

UWM AND Milwaukee

Milwaukee is the largest city in Wisconsin, with a regional population of 1.5 million people. It's the center of business, industry and culture in the state. The city is known for its year-round festivals, beautiful lakefront, friendly community and historic architecture.

UWM is located in a quiet, safe and attractive residential area and is within walking distance of Lake Michigan. Milwaukee's downtown is a short car or bus ride away. All UWM students have free access to the B.O.S.S. safe ride service, which provides students with secure transportation every day, and U-PASS, a bus pass that gives riders access to all of Milwaukee County.

From outdoor concerts and film festivals to food trucks and 24-hour bike races, there's always something to see and do in Milwaukee. The city's biggest can't-miss event is Summerfest, one of the largest music festivals in the world.

60+

**festivals and events
every year**

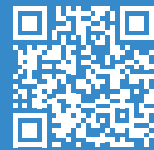
1,400

**acres of beaches and
lakefront parks**

120+

**miles of Milwaukee
County bike trails**

SCAN ME TO
LEARN MORE!



Greta

BBA INFORMATION TECHNOLOGY MANAGEMENT
MILAN, ITALY

Why I Chose UW-Milwaukee

"I wanted to keep playing tennis and studying. In Europe, I would have had to choose one or the other, but at UWM, they're really supportive and want me to succeed in both."

On Campus

"I like to go to the campus library to study with friends. It's nice how each floor has a different purpose. The first floor has a coffee shop and is more for working in groups. The second floor is much quieter and a good place for studying."

City Life

"Milwaukee is a cool city: not too crowded but not too small. Downtown is beautiful and I love Bradford Beach in the summer."



SIX FORTUNE 500 COMPANIES HEADQUARTERED IN MILWAUKEE AREA

Northwestern Mutual | ManpowerGroup | WEC Energy Group | Rockwell Automation | Kohl's Corp. | Fiserv, Inc.

A TOP-RANKED CITY FOR NEW COLLEGE GRADS

— SmartAsset in 2022

ONE OF ONLY TWO PUBLIC UNIVERSITIES

in Wisconsin offering
DOCTORAL DEGREES

NOTABLE UWM ALUMNI INCLUDE

SATYA NADELLA
(CEO of Microsoft)

LUIS ARREAGA
(U.S. ambassador)

WILLEM DAFOE
(Oscar-nominated actor)

KIMBERLEY MOTLEY
(First foreign lawyer working
in Afghanistan)

JIM RYGIEL
(Academy Award winner, visual
effects for "Lord of the Rings")

1,000+

*Undergraduate
Research*

OPPORTUNITIES

TOP 146

**RESEARCH
UNIVERSITIES**

Carnegie Classification
of Institutions of
Higher Education

AREAS OF *Study*

For a complete list of degree programs, visit uwm.edu/academics.

• Bachelor's • Master's • Doctoral

ARTS & ARCHITECTURE

- Animation
- Architecture
- Architectural Studies
- Art
- Cinematic Arts
- Dance
- Film
- Music
- Theatre Arts
- Urban Design

BUSINESS

- Accounting
- Business Administration
- Finance
- General Business
- Human Resources Management
- Information Technology Management
- Management
- Management Science
- Marketing
- Nonprofit Management & Leadership
- Supply Chain and Operations Management

EDUCATION

- Administrative Leadership & Supervision in Education
- Community Engagement & Education
- Curriculum & Instruction Education
- Educational Psychology

ENGINEERING

- Biomedical and Health Informatics
- Biomedical Engineering
- Civil Engineering
- Computer Engineering
- Computer Science
- Electrical and Computer Engineering
- Electrical Engineering
- Energy Engineering
- Engineering Mechanics
- Environmental Engineering
- Industrial and Systems Engineering
- Industrial Engineering
- Manufacturing Engineering
- Materials Engineering
- Mechanical Engineering

MATH & NATURAL SCIENCES

- Actuarial Science
- Atmospheric Science
- Biochemistry
- Biological Sciences
- Chemistry
- Conservation & Environmental Science
- Freshwater Sciences
- Freshwater Sciences & Technology
- Geosciences
- Mathematics
- Microbiology
- Neuroscience
- Physics

HEALTH CARE

- Athletic Training
- Biomedical Sciences
- Communication Sciences & Disorders
- Health Care Administration
- Nursing
- Occupational Therapy
- Physical Therapy
- Sustainable Peacebuilding

HUMANITIES

- African and African Diaspora Studies
- Anthropology
- Art History
- Communication
- Comparative Literature
- Digital Arts and Culture
- English
- Geography
- Global Studies
- History
- International Studies
- Journalism, Advertising, & Media Studies
- Linguistics
- Philosophy
- Political Science
- TESOL and Applied Linguistics
- Translation and Interpreting Studies
- Urban Studies
- Women's and Gender Studies

INFORMATION STUDIES

- Data Analytics
- Data Science
- Information Science & Technology
- Information Studies
- Library & Information Science

PUBLIC HEALTH

- Biostatistics
- Environmental Health Sciences
- Epidemiology
- Health Care Informatics
- Kinesiology
- Nutritional Sciences
- Public Health

SOCIAL SCIENCES

- Criminal Justice and Criminology
- Economics
- Psychology
- Social Welfare
- Social Work
- Sociology
- Urban Planning

NOTE: Information Science & Technology master's degree only available online.

SCAN ME TO LEARN
MORE ABOUT STEM-
DESIGNATED PROGRAMS!



APPLY NOW AT UWM.EDU/APPLY

Vy

BIOLOGICAL SCIENCES PHD STUDENT
HO CHI MINH CITY, VIETNAM

Why I Chose UW-Milwaukee

"The biggest reason is that UWM has a lot of research and funding opportunities. I also liked that it's in a city but feels safe. I work late in the lab and use UWM's free shuttle service to get home."

My Research

"Our lab is working on ways to treat fire blight, which affects apple trees. Antibiotics aren't well-regulated in Vietnam and agriculture is negatively impacted. It makes me happy that I'm doing research that could help one day."



UWM's ENGLISH LANGUAGE ACADEMY

INTENSIVE ENGLISH PROGRAM (IEP)

The Intensive English Program (IEP) helps students improve their academic English and academic skills, preparing them to move onto degree-seeking study after completing the IEP. With approval from the chosen program of study, conditionally admitted undergraduate or graduate students who successfully complete the IEP can move to full-time degree study without submitting TOEFL, IELTS or Duolingo scores.

UNDERGRADUATE ENGLISH FOR ACADEMIC PURPOSES (EAP)

Undergraduate EAP courses are required for students admitted with English placement. Classes are divided into two sequences:

- Reading and writing courses that lead students to fulfillment of the campus general education requirement for writing (English 102).
- Courses that help students improve their grammar, speaking and listening skills in their first year.

GRADUATE ENGLISH FOR ACADEMIC PURPOSES (EAP)

One graduate EAP course is required for students admitted with Dual Admission focusing on the skills where their TOEFL, IELTS or Duolingo sub-scores are the lowest – either Speaking/Listening or Reading/Writing. EAP graduate courses are also open to any graduate student that wants to improve their English language skills.

English Proficiency Requirements

	TOEFL (internet-based)	IELTS	Duolingo
Bachelor's			
Regular admission	79	6.5	120+
Regular admission with English placement	65-78	5.0-6.0	85-115
Conditional admission	0-64	0-4.5	< 85
Master's/PhD			
Regular admission	79	6.5	120+
Dual admission	68-78	6.0	95-115

Visit uwm.edu/ela or email ela@uwm.edu.

Careers AND CONNECTIONS

Sanya: Biomedical Sciences BS
Delhi, India
 Interned at Ascension Columbia
 St. Mary's as a lab assistant.



Ravi: Computer Science MS
Visakhapatnam, India
 Interned at Northwestern Mutual
 as a software intern.



Anna: Engineering MS
Tarragona, Spain
 Interned at Rockwell Automation as
 a production control analyst intern.



**1,700
 COMPANIES
 RECRUIT AT UWM**



Rawand: Sustainable Peacebuilding MSP
Amman, Jordan
 Hired at Milwaukee Muslim
 Women's Coalition as a youth
 coordinator.



Calisto: Information Science &
 Technology BSIST
Hanoi, Vietnam
 Interned at Wimmer Communities
 as an IT intern.

TOP INTERNSHIP SITES



GE Healthcare



Advocate Aurora Health Care
 American Family Insurance
 Ascension Health
 Cannes Film Festival
 Children's Wisconsin
 Discovery World
 Disney

EPIC Creative
 Hoffman York
 Kohl's Corporate
 ManpowerGroup
 Milwaukee Art Museum
 Milwaukee Brewers
 Milwaukee County Zoo

Milwaukee Police Department
 Milwaukee Public Schools
 Milwaukee Repertory Theater
 Urban Ecology Center
 Tesla
 WEC Energy Group
 Workshop Architects

Student EMPLOYMENT

International students can work up to 20 hours per week on campus while school is in session. Other employment opportunities for international students include:

CURRICULAR PRACTICAL TRAINING (CPT)

CPT provides off-campus work authorization after one year of study for students with an F-1 visa. A faculty member recommendation is required, and a UWM immigration coordinator must authorize the employment. Employment must be a required part of the program and must grant academic credit. Depending on the academic program, CPT options are limited.

OPTIONAL PRACTICAL TRAINING (OPT)

OPT is authorization for employment in your field of study either before or after degree completion. Most F-1 students do 12 months of post-completion OPT after graduation. More than 80% of international students who apply for OPT have job placements within the first three months of graduation. OPT employment authorization is granted by the U.S. Citizenship and Immigration Services (USCIS).

OPTIONAL PRACTICAL TRAINING STEM EXTENSION

Some students are eligible to apply for an 18-month extension during their initial 12 months of OPT, particularly students who have earned degrees in certain STEM fields and who are employed by companies registered with USCIS. Students apply directly to the U.S. Citizenship and Immigration Services for the OPT STEM extension.

Yash

MASTER OF URBAN DESIGN
MUMBAI, INDIA

Why I Chose UW-Milwaukee

"UWM has the only accredited architecture program in Wisconsin. If any professional wants to connect, this is where they're going to be. I liked that UWM is near Chicago, too."

My Career

"I interned at Workshop Architects for two years. Their space is incredible and they do higher education projects. Their work is very interactive."

Advice for Students

"I think a lot of international students come in nervous, but I would ask them to be bold. Of all the students in your home country, you were chosen to be here. That means you have something special to offer. Don't miss out on any of your time here. It goes by fast!"



WHAT IT Costs

2022-23 ACADEMIC YEAR TUITION AND FEES

SCHOLARSHIPS

uwm.edu/scholarships

UWM has a scholarship program for international undergraduate students. Scholarship award decisions are based on academic merit and how the candidate contributes to the diversity of UWM. Students may be awarded up to \$5,000 per academic year (renewable for a maximum of four years total). Incoming students are also encouraged to apply for additional scholarship opportunities through UWM's Panther Scholarship Portal.

ASSISTANTSHIPS

uwm.edu/assistantships

Graduate students have the opportunity for tuition remission and a stipend via assistantships. There are four kinds of graduate student assistantships: teaching assistants, project assistants, program assistants and research assistants.



ESTIMATED COST OF ATTENDANCE: 2022-23 ACADEMIC YEAR TUITION AND FEES

EXPENSE	UNDERGRADUATE STUDENT	GRADUATE STUDENT	BUSINESS GRADUATE STUDENT	HEALTH SCIENCES GRADUATE STUDENT
Tuition (2 semesters)	\$19,956	\$24,132	\$28,178	\$28,245
Segregated Fees & International Student Fees (2 semesters)	\$1,729	\$1,729	\$1,729	\$1,729
Living Expenses (12 months)	\$15,000	\$15,000	\$15,000	\$15,000
International Student Health Insurance (12 months)	\$1,694	\$1,694	\$1,694	\$1,694
Estimated Total	\$38,379	\$42,555	\$46,601	\$46,668

Housing

Maximize convenience and enjoy your independence with a suite-style accommodation in one of UWM's five on-campus residential communities. Please note that new freshmen are required to live on campus for the first academic year.

Each residence hall has its own personality, but here's what most of them have in common:

- Study lounges with Wi-Fi, fitness facilities, delicious dining and activities to get you feeling like part of the UWM community.
- The estimated housing cost for 2022-23 (Fall/Spring) is \$6,706 for undergraduate students and \$9,836 for graduate students.
- The estimated cost for meals for the 2022-23 academic year (Fall/Spring) is \$4,190. All University Housing residents living in suites without kitchens are required to choose a meal plan. There are also several grocery stores near campus.

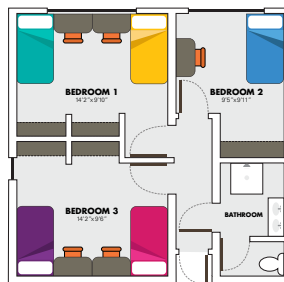
Sandburg Hall and Kenilworth Square Apartments are two popular housing options for international students. For a complete list of UWM's housing options, visit uwm.edu/housing.

ON-CAMPUS LIVING

SANDBURG HALL

Freshman Students & Up

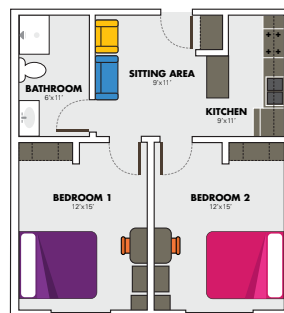
Classic, suite-style residence hall located in the heart of campus. Building amenities include fitness room, cafeteria, coffee shop, study lounge and movie theater.



KENILWORTH SQUARE

Third-Year Students & Up

Modern private residences for upper-level students and students 21 and older, located in Milwaukee's vibrant east side.



OFF-CAMPUS LIVING

Students who aren't new freshman can also choose to live off campus and can find support through the UWM Neighborhood Housing Office. For more information, visit uwm.edu/neighborhoodhousing.

UNIVERSITY of WISCONSIN


UWMILWAUKEE



Connect with us!

 uwm.edu

 [uwmilwaukee](https://www.instagram.com/uwmilwaukee)

 [/uwminternationaleducation](https://www.facebook.com/uwminternationaleducation)
and [/uwmilwaukee](https://www.facebook.com/uwmilwaukee)

 [uwmilwaukee](https://www.snapchat.com/add/uwmilwaukee)

 [/uwmnews](https://www.youtube.com/uwmnews)

EXPLORE UWM WHEREVER YOU ARE

Take a virtual tour of campus at uwm.edu/virtualtour. Available in FIVE languages!

APPLY NOW! uwm.edu/apply

Only 90 minutes from Chicago!

