

AFSA Fall Reception



October 24, 2019





Karen Miyoshi opens the program



Japanese Student Association Performance





Vice Chancellor Joan Prince



Chancellor Mark Mone



Provost Johannes Britz



AFSA Student Award Recipients



**Mania Taher,
Architecture Doctoral
Student
Swarnjit Arora Award**



Nouchee Thao

Psychology Undergraduate Student

AFSA Award





Associate Vice Chancellor Chia Vang

Global Inclusion and Engagement



Asian & Pacific Islander Scholars

Graduate Student Organization



Socializing



























The Silent Auction & 50-50 Raffle















Supporting UWM's Food Bank







Food Provided by:

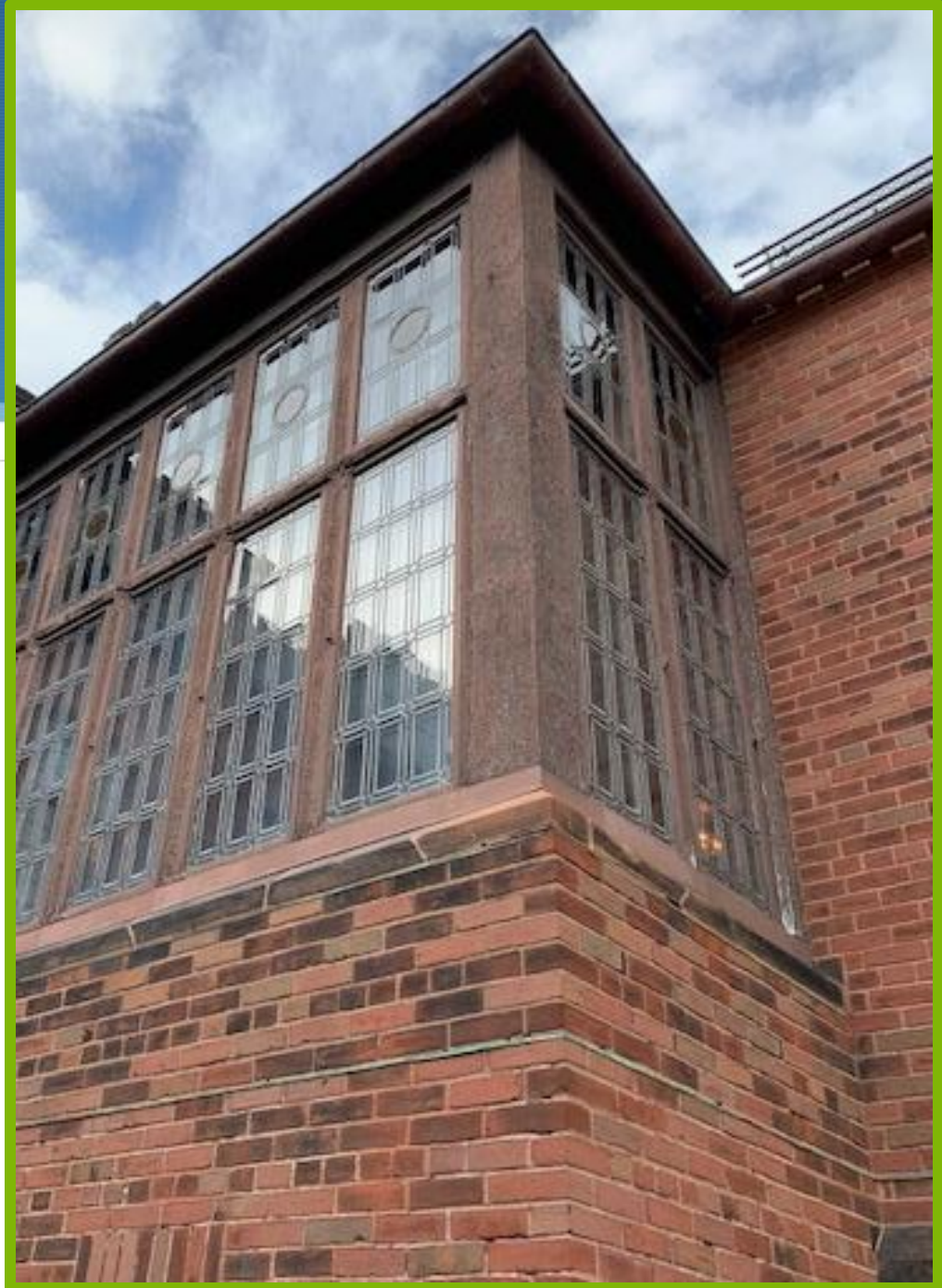
**Jackie's Care LLC; 3902 N.
76th Street, Milwaukee, WI
53222 262-527-3292**

**Wide Noodles and Beef
Pork & Veggie Egg Rolls
Orange Chicken
Vegetable Fried Rice
Sesame Balls**

**Bombay Sweets; 3401 S. 13th
Street, Milwaukee, WI 53215
(414) 383-3553
Samosas**

**Pacific Produce; 5455 S. 27th
Street, Greenfield, WI 53221
Almond Cookies
Mochi**

**Campus Catering 20/20
Rishi Green, Herbal & Black
Tea, Hot Cocoa & Iced Water**





Photos by Susie Lamborn

AFSA Steering Committee

Karen Miyoshi, Co-Chair, Health Sciences

Yuko Kojima-Wert, Co-Chair,
Foreign Languages & Literature

Chia Y. Vang, Global Inclusion & Engage-
ment/History & Hmong Diaspora, L&S

Hanh Trinh, Health Sciences

Vipavee Thongpriwan, Nursing

Paru Shah, Political Science

Channy Rasavong, Central Advising

Jacqueline Nguyen, Ed. Psych., SOE

Gwat-Yong Lie, Social Welfare

Pachoua Lor, Southeast Asian American
Student Center

Dawn Lee-Vue, Office of the Provost

Susie Lamborn, Ed. Psych., SOE

Linda Huang, Emerita

Lingqian (Ivy) Hu, Urban Planning

Janey Christoffersen, Registrar's Office

Natalie Chin, Registrar's Office

Swarnjit Arora, Professor Emeritus



