

Office of Student Scholarships

October 2022
Advisors & Counselors Network

OSS Team

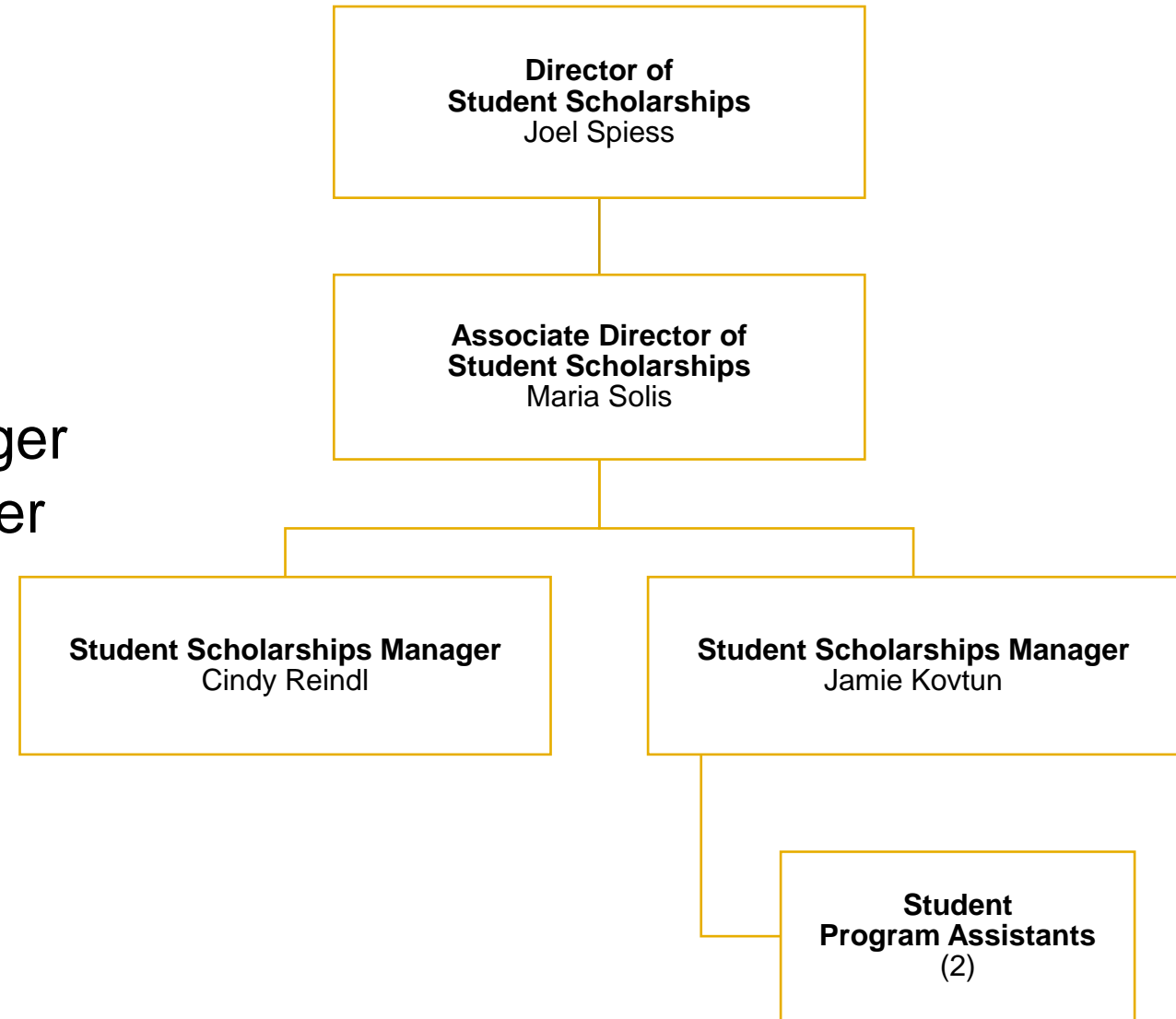
Professional Staff

- Joel Spiess, Director
- Maria Solis, Associate Director
- Jamie Kovtun, Scholarships Manager
- Cindy Reindl, Scholarships Manager

Student Staff

- Yasin Bah, Program Assistant
- Vacant, Program Assistant

Location: 262 Mellencamp Hall



OSS Mission Statement

- Promote the recruitment, retention, and academic success of UW-Milwaukee students through effective implementation and execution of scholarship activities.

OSS Core Values

- **Adaptability:** positivity, enthusiasm, innovation, flexibility, focused on solutions
- **Collaboration:** leadership, communication, transparency, service to others
- **Integrity:** ethical decision-making, attention to detail, compliance, timeliness
- **Diversity:** college attainability, equity, inclusion, respect

OSS Purpose

OSS provides centralized coordination and resources for key functions for student scholarships at UWM, including training, technology, assessment, community-building, policy, and communication. OSS serves as the enterprise system administrator for the Panther Scholarship Portal.

In addition, OSS is the unit responsible for the following:

- Administering 90 university-wide UWM Foundation scholarship portfolios (totaling \$1 million annually)
- Awarding institutional scholarship dollars (totaling approximately \$4.5 million annually)
- Processing scholarships in collaboration with the Athletics Department (\$4 million annually) and Graduate School (\$2 million annually)
- Processing more than 1500 external/private scholarships (totaling approximately \$3 million annually)
- Administering Moon Shot for Equity retention grants (\$550K annually) and similar enrollment-driven funding campaigns and processing emergency grants issued by the Dean of Students Office

OSS also serves as a resource for campus units that award dollars to students for emergency funds and prizes.

OSS Partners



University
Advancement



Awarding Units:
Schools, Colleges



Undergraduate
Admissions



Financial Aid
Office



Business &
Financial Services



Legal Affairs

UWM Scholarships at a glance...

\$22 million in scholarships administered annually

- \$5 million (23%) is donor-funded; \$11.8 million (54%) is institutionally funded
- 1 in 3 students receive a scholarship
- Average total scholarship award per student: \$2,813
- \$8.3 million (38%) is administered by OSS

950+ scholarship portfolios managed by UWM

50+ employees directly involved in scholarship administration

24 awarding units

- 14 schools/colleges
 - L&S has more than 55 programs that award scholarships
- 9 unique units
 - U-Wide, Athletics, DOS, CIE, RHC, etc.

SCHOLARSHIPS

College is a big investment, and UW-Milwaukee is committed to helping students find ways to pay for it. Scholarships can help. Like grants, scholarships are a type of gift aid and need not be repaid. The [Panther Scholarship Portal](#) is your one-stop shop to find and apply for most scholarships offered at UWM.

PANTHER SCHOLARSHIP PORTAL

All schools and colleges and many academic departments and programs offer scholarships for students based on a variety of factors, including academic merit, leadership, and service. Some require demonstrated financial need, which means the student must submit a [FAFSA](#) to be considered. Access the [Panther Scholarship Portal](#) periodically to see if there are any new opportunities available that you might be eligible for. For more information, read the [Panther Scholarship Portal FAQs](#) (pdf).

Information by Student Type

➤ [New Freshmen](#)

➤ [New Transfer Students](#)

➤ [Continuing Students](#)

scholarships.uwm.edu



Scholarships and Financial Aid

A great education should also be an affordable one, and 80% of our students receive financial aid — usually in a combination of scholarships, loans, grants and work-study.

To apply for financial aid, submit the Free Application for Federal Student Aid (FAFSA) as soon as Oct. 1 for maximum financial aid consideration. Our Financial Aid and Scholarship Offices use the FAFSA results to determine what kind of aid you're eligible to receive.

[DOWNLOAD A FLYER \(PDF\)](#)

Have a Question? [Can Pounce help?](#)

We're here to help! Don't hesitate to reach out — someone will get back to you shortly.

Our Opportunities

[Show Filters](#)

Welcome to the Panther Scholarship Portal!

Below, you will find a listing of scholarship opportunities available to students with information about the applications, deadlines, eligibility criteria, award amounts, donors, and more. To apply for scholarships, you must be admitted to UWM. [Sign in using your ePantherID](#) and complete the General Application. Based on your answers in the General Application and your student data, you will be directed to fill out more specific applications tied to scholarships for which you are eligible.

Additional scholarship information may be found at [scholarships.uwm.edu](#). Questions? Concerns? Feedback? Contact the [Office of Student Scholarships](#).

| Award | Name | Actions |
|--------------------------|---|--|
| Varies | Electa Quinney Institute's First Nation Scholarship This scholarship is to provide financial support for First Nation... | Deadline 10/16/2022 |
| Varies from \$500 and up | Communication Department Research Awards Communication majors and graduate students will use this single... | Deadline 10/24/2022 |
| \$2,000 | Renee A. Meyers Scholarship Given to a graduate student in the Department of Communication with... | Deadline 10/24/2022 |
| Varies up to \$5,000 | Roy Arthur Swanson Comparative Literature Merit Scholarship The Roy Arthur Swanson Merit Scholarship in Comparative Literature is... | Deadline 10/24/2022 |



1 in 3
students receive
scholarships annually



STUDENT SCHOLARSHIPS

UW-Milwaukee has many scholarships and supporting programs to help you pay for college. Visit our website to learn which ones you qualify for.



[UWM.EDU/SCHOLARSHIPS](https://uwm.edu/scholarships)





SIGNATURE SCHOLARSHIPS

UWM CHANCELLOR'S MERIT SCHOLARSHIP

Amount: Up to \$1,500 annually for up to four years
Automatically awarded upon admission to UWM based on high school GPA.

UWM MKE SCHOLARS PROGRAM

Amount: Up to \$1,000 annually for up to four years
Awarded to participants of after school and academic coaching programs. Students are invited to apply during their senior year of high school.

UWM SMART START PROGRAM

Amount: Up to \$500 for first fall semester
Awarded upon completion of the UWM-MPS Smart Start program. Students are invited to apply during their senior year of high school.

ANU & SATYA NADELLA SCHOLARSHIP

Amount: Full ride (tuition & housing) for up to five years
Awarded to select graduates of Milwaukee high schools pursuing technology majors who apply by Dec. 1.

FROEDTERT MEMORIAL HOSPITAL SCHOLARSHIP

Amount: Up to \$20,000 over four years
Awarded to select students pursuing health care majors who apply by Dec. 1.

SUPPORTING PARTNERS

ALL-IN MILWAUKEE

Awarded to Milwaukee students with financial need and strong academics, leadership and service.
Amount: Up to \$5000 annually and a free first-year housing and dining package.

COLLEGE POSSIBLE

Serving primarily first-generation college students of color from limited-income backgrounds, including providing support in applying for scholarships and financial aid.
Amount: Varies

BOYS & GIRLS CLUB GRADUATION PLUS PROGRAM

Helps first-generation college attendees with financial need find scholarships. Must be a member of the Boys and Girls Clubs of Greater Milwaukee to participate.
Amount: Varies



[UWM.EDU/SCHOLARSHIPS](https://uwm.edu/scholarships)



STUDENT SCHOLARSHIPS



College is a big investment, and UW-Milwaukee is committed to helping students find ways to pay for it. Scholarships can help. Like grants, they are considered a type of gift aid and need not be repaid. At UWM, all schools and colleges and many academic departments and programs offer scholarships for students based on variety of factors, including academic merit, leadership and service. Some require demonstrated financial need, which means the student must submit a FAFSA.

Some scholarships for new freshmen require no action from the student as they are considered automatically. Other scholarship opportunities require the student to complete an application to be considered.

UWM.EDU/SCHOLARSHIPS



PANTHER SCHOLARSHIP PORTAL

The Panther Scholarship Portal provides a one-stop website for all UWM scholarships. The Portal is accessible using your ePanther ID and password as soon as you apply for admission.

Once you are admitted, complete the General Application to be considered for available scholarships. Your school/college may provide a supplemental application to identify more opportunities. After

CHANCELLOR'S MERIT SCHOLARSHIP

The Chancellor's Merit Scholarship is automatically awarded to new freshmen based on an unweighted high school GPA. All new freshmen pursuing a bachelor's degree at the Milwaukee campus are eligible. The scholarship is renewable for up to four years if students continue full-time enrollment and remain in good academic standing.

Qualified freshmen receive their scholarship automatically upon full-time enrollment and are notified of the award shortly after admittance. No scholarship application is required. Eligibility requirements:

| HIGH SCHOOL GPA | ANNUAL AWARD AMOUNT | 4-YEAR AWARD AMOUNT |
|-----------------|---------------------|---------------------|
| 4.00 | \$1,500 | \$6,000 |
| 3.75 - 3.99 | \$1,000 | \$4,000 |
| 3.40 - 3.74 | \$500 | \$2,000 |

EXTERNAL OPPORTUNITIES

There are many other scholarship opportunities outside of UWM. Explore the free sites listed below for more information. We caution you not to use any service that charges for help in applying for scholarships or financial aid.

collegenet.com

Includes an online community that invites students to share and vote on scholarship

gocollege.com

Largest free scholarship data base in the USA.

salliemae.com



School/College Scholarship Administrators

| School/College | Last Name | First Name |
|----------------|-------------------|------------|
| BUS | Baumgarten | Liz |
| BUS | Seidl | Simone |
| BUS | Wrench | Andrea |
| CEAS | Johnson | Todd |
| CEAS | Sharon | Kaempfer |
| CHS | Brondino | Kate |
| CON | Walk | Michael |
| Honors | Blaska | Laura |
| Honors | Fleck | Laura |
| L&S | Alba | Deanna |
| PSOA | Christman | Rebecca |
| SARUP | Stroschein-Taylor | Tammy |
| SARUP | Zahasky | Emily |
| SFS | Kaul | Mallory |
| SFS | Thiel | Aaron |
| SOE/HBSSW | Kaiser | Michaela |
| SOIS | Sadowski | Angie |
| ZSPH | Sandoval | Analise |

How can you help?

- Hang a scholarships poster or download/print flyers for your desk
- Add scholarships.uwm.edu to your action items for students following appointments
- Highlight scholarships.uwm.edu in your ongoing messaging/emails to students
- Ask your students if they have completed the Panther Scholarship Portal General Application
- Browse the Panther Scholarship Portal so you can speak to questions students have about scholarships in your unit
- Advertise unit scholarships at recruitment events