

NEIGHBORHOOD HOUSING OFFICE

ACN Presentation

○ Alyssa Conrardy

○ Outreach Program Manager – Oversees Neighborhood Housing

Programs and Initiatives

- Neighborhood Housing Fair (March 15th)
- Preferred Tenant Program (Online)
- Move-Out Festival (May 21st)

General Renting Tips

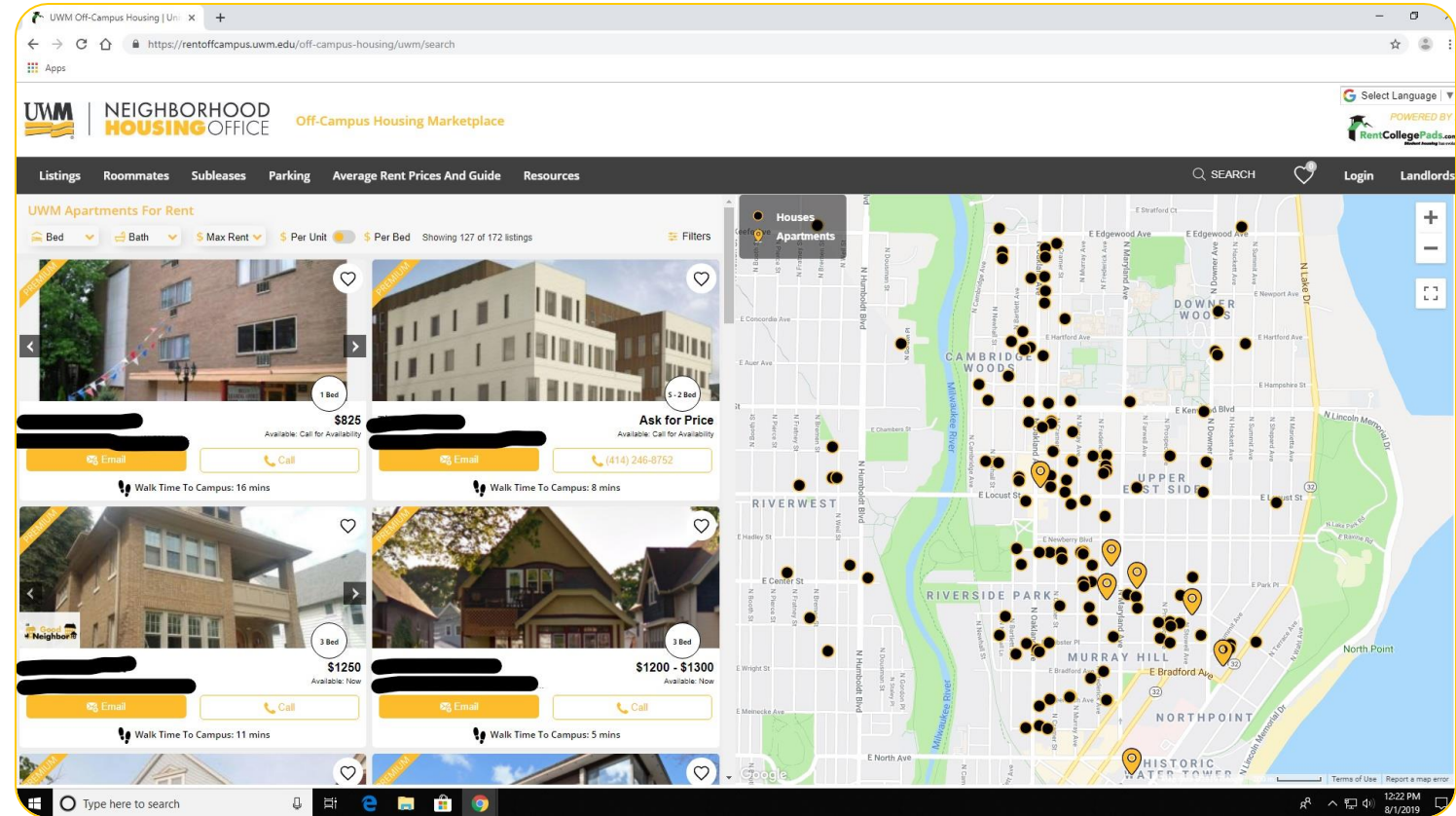
- Sign lease 2-3 months in advance of move-in, no earlier!
- Occupancy Ordinance: No more than 3 unrelated people in a unit.
- Utilize the NHO and University Legal Clinic, which provides legal assistance free to UWM students.

Milwaukee Winter Rules

- City of Milwaukee ordinance states that snow and ice must be removed from sidewalks in front of houses/apartments within 24 hours after snow has ceased to fall
- Certain residential streets are restricted to parking on a certain side of the street from December 1 to March 1
- Snow Emergencies – vehicles must always be parked in compliance with Snow Emergency regulations if a Snow Emergency has been declared
- Sign up for winter parking alerts via [Regulations \(milwaukee.gov\)](https://www.milwaukee.gov/Regulations)

Listing Service

- Listing Service
 - Listings
 - Map
 - Roommates
 - Roommate profile
 - Posting
 - Viewing other posts and filters
 - Subleases
 - Parking
 - Average Rent Prices
 - Extra Resources
 - Our website



Neighborhood Housing Office

- **We don't:**
 - Assign rooms, apartments, or showings
 - Own any properties
 - Manage/employ landlords
 - Co-Sign or handle any payment process
 - Review leases
 - Give legal advice

2022 Off-Campus Census

- Census day is March 18, runs for semester
- Everyone living on or off-campus (students AND non-students) should take the census
- Census will be available to take online
- Census is confidential and used for research purposes only
- Gathering information about where our students and community members live and what resources they use to get information about renting off-campus
- Encourage students to take the census – we will have giveaways and raffles prizes for simply taking the survey

Things To Do!

- Include NHO in any communication about off-campus housing (housing@uwm.edu)
- Encourage students to take the Preferred Tenant Program
- Encourage students to take the Off-Campus Census
- Advertise the Housing Fair – March 15

Questions?

Facebook: @UWMNeighborhoodHousing
Website: uwm.edu/neighborhoodhousing

Phone: (414) 229-6999
Student Union WG85
housing@uwm.edu