

# Financial Aid

---

PART DUEX

# Goals

---

To make you love us just a little more if even possible?😊

- Update to Liaisons, How we can help you
- SAP
- Add/Drop/Withdrawal/Census Date
- Repeated Coursework

# Liaisons ~

## Direct Access for You

---

NAMES, EMAILS, DEPARTMENTS

RULES OF DIRECT REFERRALS

A solid orange horizontal bar at the bottom of the slide.

# Huong Bui

Grad Assistant

[huongbui@uwm.edu](mailto:huongbui@uwm.edu)

X 7240

Fee Deferments



# Cesilia Gonzalez

Grad Assistant

[cesilia@uwm.edu](mailto:cesilia@uwm.edu)

X7239

Fee Deferments

Hispanic Presentations

Casa Abierta



# Ian Hoeffler

[ith@uwm.edu](mailto:ith@uwm.edu)

X5392

Flex Program

SSC



# Katrina McGann

[ktmcgann@uwm.edu](mailto:ktmcgann@uwm.edu)

X6361

Mapworks



# Megan Poytinger

[Horvath3@uwm.edu](mailto:Horvath3@uwm.edu)

X5436

Neighborhood Housing

Norris Health Center

AOC, Trio, Pre-college

TASO

School of Education

ACN





# Greta Pano

[gvoltz@uwm.edu](mailto:gvoltz@uwm.edu)

X2911

Engineering and Applied Sciences

Architecture and Urban Planning

Information Studies

Letters & Sciences

Life Impact



# Cindy Reindl

[Careindl@uwm.edu](mailto:Careindl@uwm.edu)

X6395

Center for International Education

Honors Program

Children's Center

Peck School of the Arts

SWAT Team



# Ivonne Rodriguez

[rodriguir@uwm.edu](mailto:rodriguir@uwm.edu)

X3190

Health Sciences

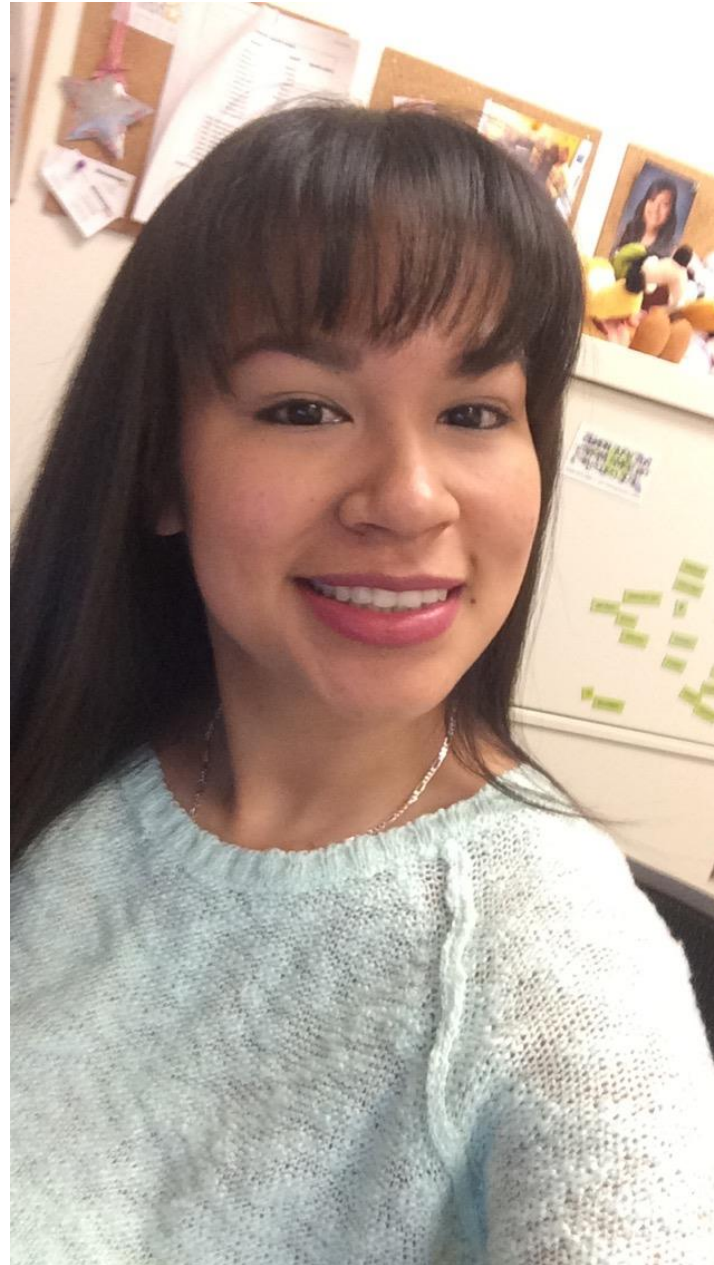
School of Business

School of Public Health

AOC, Trio, Pre-College

Roberto Hernandez Center

American Indian Student Advising



# Chue Vang

[cvang@uwm.edu](mailto:cvang@uwm.edu)

X6461

Nursing

Southeast Asian Advising

African American Student Advising

Student Accessibility Center

Helen Bader School of Social Welfare



# Triena Bodart

[tbodart@uwm.edu](mailto:tbodart@uwm.edu)

X2404

Bursar's office

Dean of Student Life

Admission for Undergrad and Graduate  
Schools

EMBA

Orientation

Presentation Requests



# Your Liaisons

We're here to work with you!

## **WHAT** can we do for you:

- Immediate assistance
- Presentations for departments
- Presentations for student groups
- Go to person for guidance
- Provide letters and documentation

# Let's talk about SAP ~ baby.....

---

TIMEFRAME = 180 CREDITS

- Separate from the 165 credit rule
- Transfer credits
- Remedial credits
- Repeated courses
- Incomplete courses
- Withdrawals
- Consortium credits
- Study Abroad credits
- Changing Majors

PACE = 66.67% (COMPLETED /ATTEMPTED)

- Census Date is Critical to attempted date
- (10<sup>th</sup> day of classes)

# Academic Plans *(federally necessary evil)*

---

The plan **can only include** credits necessary to complete their first degree

- Cannot include minors, certificates, or second majors

## Sticking to it

- You can't change the plan without completing a new appeal with new reason and documentation
- Intent is to ensure students can quickly complete degree with only necessary coursework
- Must enroll for the exact number of credits and must successfully complete 100% of them

## You cannot appeal because of double majors

- Only allowed to receive Pell for first degree

## Details and critical factors

- Each semester counts whether the student enrolls or not
- Even if the student pays for it out of pocket
- You must include remedial classes on plan



# Census Date, Dropping/Adding and Withdrawing

---

## 10<sup>th</sup> Day of classes is Census Date

- This is the date we hold students accountable for their credit level
- Students need to be cautious of dropping and adding classes

## Withdrawals

- Impact

## 60% of Semester

- Fall and spring are typically in the 11<sup>th</sup> week of classes

# Drop/Add/Withdrawal Questions

---

## DROP/ADD

Can you drop add a class after census to replace a class.....?

Will the student owe money?

## WITHDRAWING

60% date

When does a student owe money?

# Repeated Coursework

---

There is a limit as to how many times we may pay for coursework students repeatedly take:

- Financial aid may pay for students repeating coursework if they repeatedly fail the course.
- Once a student passes a course (D- or better), they may only receive aid for it once more.

Students will be notified they will not receive aid for coursework

- Must be enrolled for a minimum of 6 other eligible credits as UG
- Must be enrolled for a minimum of 4 other eligible credits as Grad

# Questions?

---