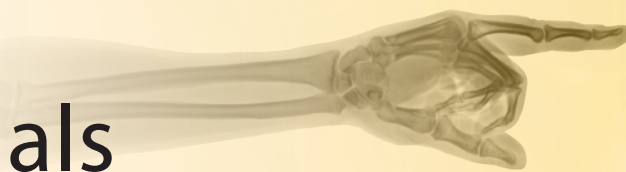


# Continuing Education for Healthcare Professionals



## COURSE DESCRIPTION:

Day one is designed to introduce participants to the science, assessment and application techniques of the Kinesio Taping® Method. Lecture tutorials of the history, science and theory of stimulus transmission through skin and resulting therapeutic benefit across efferent and afferent systems is reviewed. Corrections for Epidermis, Dermis, Fascia, Space, and Muscle in case study format are presented. Lecture and demonstration by the instructor, then participants perform the Manual Assessments and Movement Assessments. Discussion of the assessment flow charts to determine correct applications and general progression of treatment clinically.

Day two continues with instruction and demonstration of assessment and taping procedures for the Mechanical, Tendon, Ligament and Circulatory/Lymphatic Corrections in case study format. Time is allotted for questions and discussion of the assessment flow charts to determine correct applications and general progression of treatment clinically. At the conclusion of day two participants will receive 60-day access code to the KTAI database.

Day three focuses on advanced taping techniques and assessments are presented as Lecture Tutorials to introduce step by step applications for chronic edema, scar and fascial management, nerve taping as well as acute and chronic pain management. Participants will be offered ample lab time to practice each advanced technique guided by the Assessment Flowchart for clinical decision making. Case studies are presented for designing a clinically relevant application within a treatment program guided by the instructor. Case studies are then introduced for small groups of students to practice the variety of assessment techniques and advanced taping applications.

**PROGRAM NUMBER:** 10117

**CEUs:** 2.4 (Contact Hours: 24 hours)

**PRICE:** \$885

**LEVEL:** Introductory - Advanced

## CONTENT FOCUS:

Domain of OT: Performance Skills  
 Occupational Therapy Process: Evaluation,  
 Intervention, and Outcomes

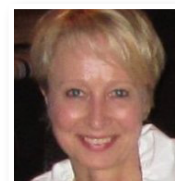
Save up **\$75** by bundling these classes!



## DAY 1 & 2 Kinesio Taping® Assessments Fundamental Concepts and Techniques

### INSTRUCTOR:

Ewa Jaraczewska, PT, CKTI, is Adult-NDT certified and a Certified TheraTogs Fitter. Currently, Ms. Jaraczewska is the manager of rehabilitation services at Loyola University Medical Center in Maywood, IL. She received her physical therapy degree from the Physical Therapy School in Warsaw, Poland and completed a three month internship at the Center for Children with Duchene muscular dystrophy in France. Following graduation, she worked as a staff physical therapist in the neurology clinic at the Medical School Hospital in Warsaw. After two years, Ms. Jaraczewska became a faculty member at the Physical Therapy School in Warsaw. Four years later, Ms. Jaraczewska moved to the United States where she worked in acute care at George Washington University and Georgetown University, Washington, DC, in inpatient rehabilitation at The Rehabilitation Institute of Chicago, and in homecare at a private agency. Throughout her career, she has been involved in research and teaching. At George Washington University Hospital, Ms. Jaraczewska, was actively involved in amyotrophic lateral sclerosis (ALS) research. At the Rehabilitation Institute of Chicago, she developed a multidisciplinary clinic for patients with Parkinson's disease. She is a contributor and presenter for the annual Kinesio taping Symposium. She has been a Certified Kinesio taping Instructor since 2003.



### DATES:

**DAY 1 & 2:** FRIDAY, SEPTEMBER 22 TO SATURDAY, SEPTEMBER 23, 2017

8:00 a.m. to 5:30 p.m. Friday, September 22; 8:00 a.m. to 5:30 p.m. Saturday, September 23

**DAY 3:** FRIDAY, DECEMBER 1, 2017

8:00 a.m. to 5:30 p.m. Friday, December 1

QUESTIONS? CONTACT US

# Continuing Education for Healthcare Professionals



## LEARNING OUTCOMES:

- Describe the concepts of Kinesio Taping
- Identify muscular anatomy as it is related to Kinesio Taping
- Explain and apply the concepts of the Kinesio Taping method
- Describe the unique qualities of the Kinesio Tex Tape
- Outline the principles of Kinesio Tex Tape application
- Utilize and demonstrate application skills in guided laboratory sessions
- Demonstrate application skills during lab sessions
- Practice the various cutting techniques and their clinical application
- Apply the Kinesio Taping method to relax and stimulate muscles
- Apply the Kinesio Taping method for pain, swelling, joint mobility, and stability
- Apply various taping techniques for treatment of the spine and upper/lower extremity dysfunction
- Apply various taping techniques for treatment of unique conditions using the concepts and principals of the Kinesio Taping method
- Identify the basic concepts of the Kinesio Taping Method
- Explain and apply advanced concepts of the Kinesio Taping Method
- Compare the epidermis, dermis, and fascial anatomy as it is related to Kinesio Taping
- Demonstrate application skills in guided laboratory sessions
- Apply the Kinesio Taping Method to stimulate epidermis, dermis, and fascial response
- Apply advanced clinical taping techniques for treatment of the spine, neurological conditions, and upper/lower extremity dysfunction



## DAY 3

# Kinesio Taping® Advanced Techniques and Clinical Reasoning

## INSTRUCTOR:

Randall Alford, OTR/L, CHT, CKTI, is a graduate of Texas Woman's University and has been practicing since 1994. He has been a Kinesio taping instructor since 2003 and has taught courses nationally. He presently works in a private practice in Baton Rouge, LA as the Director of Hand Therapy for the Physical Therapy and Hand Center, where he primarily treats orthopaedic and sports injuries of the upper extremity. He taught Sensory-Motor class in the Fall of 2001 at the LSU Health Sciences Center in New Orleans, and has presented lectures on hand and upper extremity management at LSU Athletic Training Department in Baton Rouge, LA. He has been a certified hand therapist since 2000, and has developed and taught many orthopaedic and splinting classes of the upper extremity.



## AUDIENCE:

PTs, OTs, OTAs, PTAs, ATs, Physicians, Chiropractors, Licensed Acupuncturists, Licensed Massage Therapists, and other allied health professionals

**LOCATION:** UWM-Milwaukee Continuing Education Plankinton Building, 7th Floor  
 161 West Wisconsin Avenue, Milwaukee, WI 53203

QUESTIONS? CONTACT US

CHS-CE.UWM.EDU

| 414-227-3123

| CHS-OUTREACH@UWM.EDU